

Twitter Connector

Software Version 12.4

Administration Guide



Document Release Date: October 2019
Software Release Date: October 2019

Legal notices

Copyright notice

© Copyright 2019 Micro Focus or one of its affiliates.

The only warranties for products and services of Micro Focus and its affiliates and licensors ("Micro Focus") are set forth in the express warranty statements accompanying such products and services. Nothing herein should be construed as constituting an additional warranty. Micro Focus shall not be liable for technical or editorial errors or omissions contained herein. The information contained herein is subject to change without notice.

Documentation updates

The title page of this document contains the following identifying information:

- Software Version number, which indicates the software version.
- Document Release Date, which changes each time the document is updated.
- Software Release Date, which indicates the release date of this version of the software.

To check for updated documentation, visit <https://www.microfocus.com/support-and-services/documentation/>.

Support

Visit the [MySupport portal](#) to access contact information and details about the products, services, and support that Micro Focus offers.

This portal also provides customer self-solve capabilities. It gives you a fast and efficient way to access interactive technical support tools needed to manage your business. As a valued support customer, you can benefit by using the MySupport portal to:

- Search for knowledge documents of interest
- Access product documentation
- View software vulnerability alerts
- Enter into discussions with other software customers
- Download software patches
- Manage software licenses, downloads, and support contracts
- Submit and track service requests
- Contact customer support
- View information about all services that Support offers

Many areas of the portal require you to sign in. If you need an account, you can create one when prompted to sign in. To learn about the different access levels the portal uses, see the [Access Levels descriptions](#).

About this PDF version of online Help

This document is a PDF version of the online Help.

This PDF file is provided so you can easily print multiple topics or read the online Help.

Because this content was originally created to be viewed as online help in a web browser, some topics may not be formatted properly. Some interactive topics may not be present in this PDF version. Those topics can be successfully printed from within the online Help.

Contents

Chapter 1: Introduction	7
Twitter Connector	7
Supported Actions	7
Connector Framework Server	8
The IDOL Platform	10
System Architecture	11
Display Online Help	12
Chapter 2: Install Twitter Connector	14
System Requirements	14
Install Twitter Connector on Windows	14
Install Twitter Connector on Linux	17
Configure the License Server Host and Port	17
Chapter 3: Configure Twitter Connector	18
Twitter Connector Configuration File	18
Modify Configuration Parameter Values	20
Include an External Configuration File	21
Include the Whole External Configuration File	22
Include Sections of an External Configuration File	22
Include Parameters from an External Configuration File	23
Merge a Section from an External Configuration File	23
Encrypt Passwords	24
Create a Key File	24
Encrypt a Password	25
Decrypt a Password	26
Configure Client Authorization	26
Register with a Distributed Connector	28
Set Up Secure Communication	29
Configure Outgoing SSL Connections	29
Configure Incoming SSL Connections	30
Backup and Restore the Connector's State	31
Backup a Connector's State	31
Restore a Connector's State	32

Validate the Configuration File	32
Chapter 4: Start and Stop the Connector	33
Start the Connector	33
Verify that Twitter Connector is Running	34
GetStatus	34
GetLicenseInfo	34
Stop the Connector	34
Chapter 5: Send Actions to Twitter Connector	36
Send Actions to Twitter Connector	36
Asynchronous Actions	36
Check the Status of an Asynchronous Action	37
Cancel an Asynchronous Action that is Queued	37
Stop an Asynchronous Action that is Running	37
Store Action Queues in an External Database	38
Prerequisites	38
Configure Twitter Connector	39
Store Action Queues in Memory	40
Use XSL Templates to Transform Action Responses	42
Example XSL Templates	43
Chapter 6: Use the Connector	44
Configure OAuth Authentication	44
Retrieve Information from a Twitter Stream	45
Retrieve Information from a Twitter Search	47
Retrieve Information from a User's Timeline	48
Document Fields	49
Schedule Fetch Tasks	49
Troubleshoot the Connector	51
Chapter 7: Manipulate Documents	52
Introduction	52
Add a Field to Documents using an Ingest Action	52
Customize Document Processing	53
Standardize Field Names	54
Configure Field Standardization	54
Customize Field Standardization	55

Run Lua Scripts	59
Write a Lua Script	60
Run a Lua Script using an Ingest Action	61
Example Lua Scripts	62
Add a Field to a Document	62
Merge Document Fields	63
 Chapter 8: Ingestion	 64
Introduction	64
Send Data to Connector Framework Server	65
Send Data to Another Repository	66
Index Documents Directly into IDOL Server	67
Index Documents into Vertica	68
Prepare the Vertica Database	69
Send Data to Vertica	70
Send Data to a MetaStore	71
Run a Lua Script after Ingestion	72
 Chapter 9: Monitor the Connector	 74
IDOL Admin	74
Prerequisites	74
Install IDOL Admin	74
Access IDOL Admin	75
View Connector Statistics	76
Use the Connector Logs	77
Customize Logging	78
Monitor Asynchronous Actions using Event Handlers	79
Configure an Event Handler	80
Write a Lua Script to Handle Events	81
Set Up Performance Monitoring	81
Configure the Connector to Pause	82
Determine if an Action is Paused	83
Set Up Document Tracking	83
 Glossary	 86
 Send documentation feedback	 89

Chapter 1: Introduction

This section provides an overview of the Micro Focus Twitter Connector.

• Twitter Connector	7
• Connector Framework Server	8
• The IDOL Platform	10
• System Architecture	11
• Display Online Help	12

Twitter Connector

The Twitter Connector is an IDOL connector that retrieves tweets from Twitter.

The Twitter Connector can retrieve tweets in several ways:

- **Twitter Streaming API**

Through the Streaming API you can retrieve tweets as they are created. You can retrieve a filtered stream of tweets that match specific languages and also match a specific user, location, or keyword. Alternatively, you can retrieve a random sample of tweets.

The Twitter Streaming API provides a live stream of data. This means that the connector can only retrieve tweets that are created when the `synchronize` action is running. Tweets created at other times are not retrieved. In this mode, the `synchronize` action does not stop unless you set the `TaskMaxDuration` configuration parameter, run the `StopFetch` action, or stop the connector.

- **Twitter REST API: Search**

The connector retrieves a sample of recent tweets (from approximately the last seven days) that match a query. Older tweets cannot be retrieved because of limitations imposed by the Twitter API. In this mode, the `synchronize` action finishes when all of the requested tweets have been ingested.

- **Twitter REST API: User Timeline**

The connector ingests tweets made by a specific user. In this mode, the `synchronize` action finishes when all of the requested tweets have been ingested.

Supported Actions

The Twitter Connector supports the following actions:

Action	Supported	Further Information
--------	-----------	---------------------

Synchronize	✓	Retrieve Information from a Twitter Stream, on page 45 Retrieve Information from a Twitter Search, on page 47 Retrieve Information from a User's Timeline, on page 48
Synchronize (identifiers)	✗	
Synchronize Groups	✗	
Collect	✓	
Identifiers	✗	
Insert	✗	
Delete/Remove	✗	
Hold/ReleaseHold	✗	
Update	✗	
Stub	✗	
GetURI	✗	
View	✓	

Connector Framework Server

Connector Framework Server (CFS) processes the information that is retrieved by connectors, and then indexes the information into IDOL.

A single CFS can process information from any number of connectors. For example, a CFS might process files retrieved by a File System Connector, web pages retrieved by a Web Connector, and e-mail messages retrieved by an Exchange Connector.

To use the Twitter Connector to index documents into IDOL Server, you must have a CFS. When you install the Twitter Connector, you can choose to install a CFS or point the connector to an existing CFS.

For information about how to configure and use Connector Framework Server, refer to the *Connector Framework Server Administration Guide*.

Filter Documents and Extract Subfiles

The documents that are sent by connectors to CFS contain only metadata extracted from the repository, such as the location of a file or record that the connector has retrieved. CFS uses KeyView to extract the file content and file specific metadata from over 1000 different file types, and adds this information to the documents. This allows IDOL to extract meaning from the information contained in the repository, without needing to process the information in its native format.

CFS also uses KeyView to extract and process sub-files. Sub-files are files that are contained within other files. For example, an e-mail message might contain attachments that you want to index, or a Microsoft Word document might contain embedded objects.

Manipulate and Enrich Documents

CFS provides features to manipulate and enrich documents before they are indexed into IDOL. For example, you can:

- add additional fields to a document.
- divide long documents into multiple sections.
- run tasks including Education, Optical Character Recognition, or Face Recognition, and add the information that is obtained to the document.
- run a custom Lua script to modify a document.

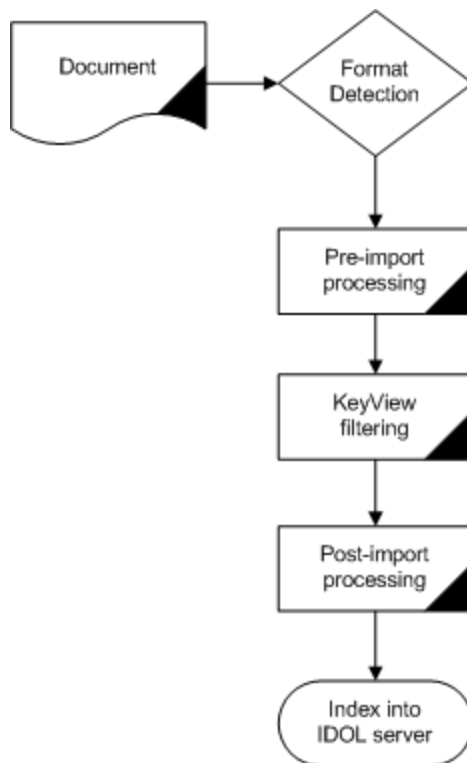
Index Documents

After CFS finishes processing documents, it automatically indexes them into one or more indexes. CFS can index documents into:

- **IDOL Server** (or send them to a *Distributed Index Handler*, so that they can be distributed across multiple IDOL servers).
- **Vertica**.

Import Process

This section describes the import process for new files that are added to IDOL through CFS.



1. Connectors aggregate documents from repositories and send the files to CFS. A single CFS can process documents from multiple connectors. For example, CFS might receive HTML files from HTTP Connectors, e-mail messages from Exchange Connector, and database records from ODBC Connector.
2. CFS runs pre-import tasks. Pre-Import tasks occur before document content and file-specific metadata is extracted by KeyView.
3. KeyView filters the document content, and extracts sub-files.
4. CFS runs post-import tasks. Post-Import tasks occur after KeyView has extracted document content and file-specific metadata.
5. The data is indexed into IDOL.

The IDOL Platform

At the core of Twitter Connector is the *Intelligent Data Operating Layer* (IDOL).

IDOL gathers and processes unstructured, semi-structured, and structured information in any format from multiple repositories using IDOL connectors and a global relational index. It can automatically form a contextual understanding of the information in real time, linking disparate data sources together based on the concepts contained within them. For example, IDOL can automatically link concepts contained in an email message to a recorded phone conversation, that can be associated with a stock trade. This information is then imported into a format that is easily searchable, adding advanced retrieval, collaboration, and personalization to an application that integrates the technology.

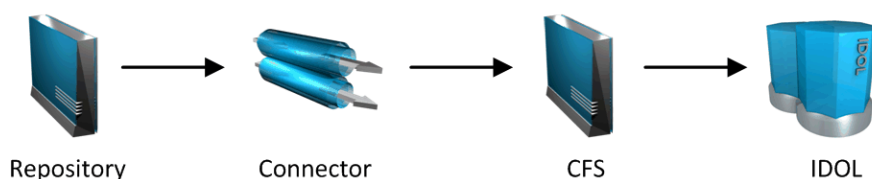
For more information on IDOL, see the *IDOL Getting Started Guide*.

System Architecture

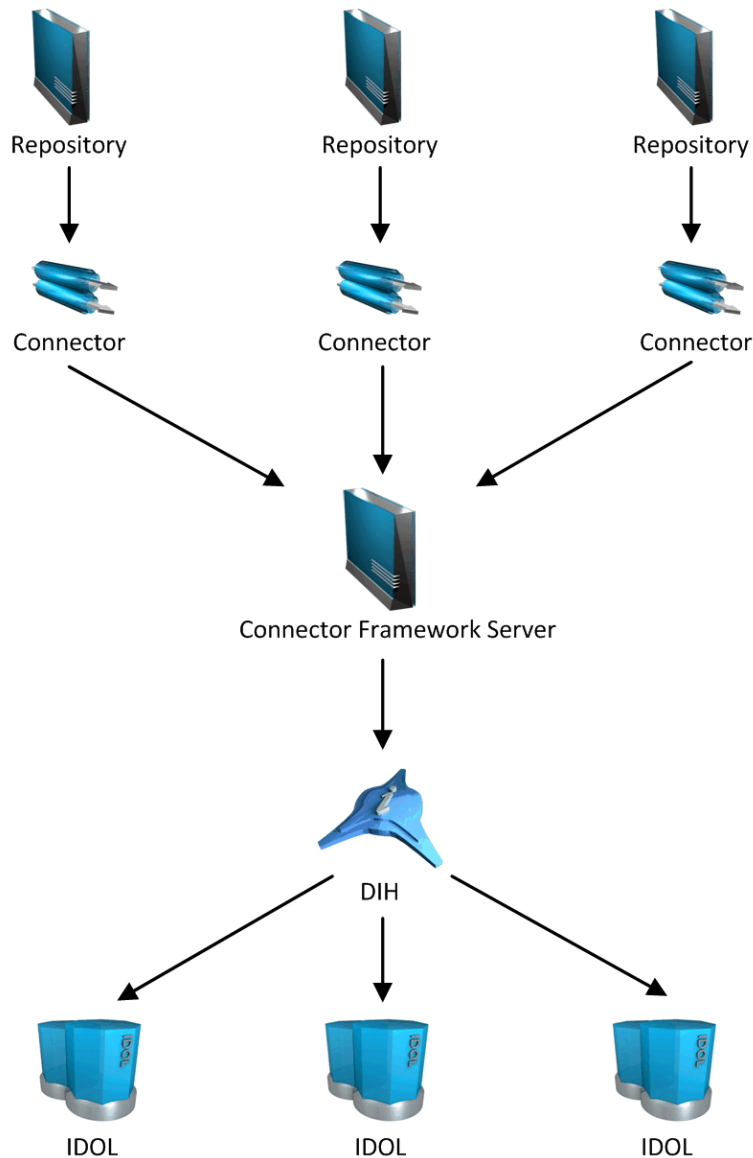
An IDOL infrastructure can include the following components:

- **Connectors.** Connectors aggregate data from repositories and send the data to CFS.
- **Connector Framework Server (CFS).** Connector Framework Server (CFS) processes and enriches the information that is retrieved by connectors.
- **IDOL Server.** IDOL stores and processes the information that is indexed into it by CFS.
- **Distributed Index Handler (DIH).** The Distributed Index Handler distributes data across multiple IDOL servers. Using multiple IDOL servers can increase the availability and scalability of the system.
- **License Server.** The License server licenses multiple products.

These components can be installed in many different configurations. The simplest installation consists of a single connector, a single CFS, and a single IDOL Server.



A more complex configuration might include more than one connector, or use a Distributed Index Handler (DIH) to index content across multiple IDOL Servers.



Display Online Help

You can display the Twitter Connector Reference by sending an action from your web browser. The Twitter Connector Reference describes the actions and configuration parameters that you can use with Twitter Connector.

For Twitter Connector to display help, the help data file (`help.dat`) must be available in the installation folder.

To display help for Twitter Connector

1. Start Twitter Connector.
2. Send the following action from your web browser:

`http://host:port/action=Help`

where:

host is the IP address or name of the machine on which Twitter Connector is installed.

port is the ACI port by which you send actions to Twitter Connector (set by the Port parameter in the [Server] section of the configuration file).

For example:

`http://12.3.4.56:9000/action=help`

Chapter 2: Install Twitter Connector

This section describes how to install the Twitter Connector.

• System Requirements	14
• Install Twitter Connector on Windows	14
• Install Twitter Connector on Linux	17
• Configure the License Server Host and Port	17

System Requirements

Twitter Connector can be installed as part of a larger system that includes an IDOL Server and an interface for the information stored in IDOL Server. To maximize performance, Micro Focus recommends that you install IDOL Server and the connector on different machines.

For information about the minimum system requirements required to run IDOL components, including Twitter Connector, refer to the *IDOL Getting Started Guide*.

Connector Machine

The clock on the machine hosting the connector must be correct for OAuth authentication to work successfully. Micro Focus recommends that you synchronize the system clock with a time server.

Install Twitter Connector on Windows

To install the Twitter Connector on Windows, use the following procedure.

To install the Twitter Connector

1. Run the Twitter Connector installation program.
The installation wizard opens.
2. Read the installation instructions and click **Next**.
The License Agreement dialog box opens.
3. Read the license agreement. If you agree to its terms, click **I accept the agreement** and click **Next**.
The Installation Directory dialog box opens.
4. Choose an installation folder for Twitter Connector and click **Next**.

The Service Name dialog box opens.

5. In the **Service name** box, type a name to use for the connector's Windows service and click **Next**.

The Service Port and ACI Port dialog box opens.

6. Type the following information, and click **Next**.

Service port The port used by the connector to listen for service actions.

ACI port The port used by the connector to listen for actions.

The License Server Configuration dialog box opens.

7. Type the following information, and click **Next**.

License server host The host name or IP address of your License server.

License server port The ACI port of your License server.

The IDOL database dialog box opens.

8. In the **IDOL database** box, type the name of the IDOL database that you want to index data into, and click **Next**.

The Proxy Server dialog box opens.

9. If a proxy is required to access Twitter, type the following information and click **Next**. Otherwise, just click **Next**.

Proxy host The host name or IP address of the proxy server to use to access the repository.

Proxy port The port of the proxy server to use to access the repository.

Proxy username The user name to use to authenticate with the proxy server.

Proxy password The password to use to authenticate with the proxy server.

The Twitter Configuration dialog box opens.

10. Choose how to retrieve tweets from Twitter, and then click **Next**.

- Stream Type**
- **Filter**. The connector retrieves tweets that match the specified users, terms, or locations.
 - **Sample**. The connector retrieves a random sample of public tweets.

If you selected the **Filter** stream type, set at least one of the following options. The connector retrieves tweets that match any of the specified users, terms, or locations.

Users to follow	A comma-separated list of Twitter user names or IDs. The connector retrieves tweets from these users. Do not include the '@' character before the Twitter user name.
Terms to track	A comma separated list of terms. The connector retrieves tweets that match these keywords.
Locations to follow	A comma-separated list of longitude and latitude values, in the order [Longitude West], [Latitude South], [Longitude East], [Latitude North]. The connector retrieves tweets that originate from the specified regions.

The CFS dialog box opens.

11. Choose whether to install a new CFS or use an existing CFS.

- To install a new CFS, select the **Install a new CFS** check box and click **Next**.

The Installation directory dialog box opens. Go to the next step.

- To use an existing CFS, clear the **Install a new CFS** check box and click **Next**.

Type the **Hostname** and **Port** of your existing CFS. Then, click **Next** and go to step 16.

12. Choose an installation folder for the Connector Framework Server and then click **Next**.

The Installation name dialog box opens.

13. In the **Service name** box, type a unique name for the Connector Framework service and click **Next**. The name must not contain any spaces.

The CFS dialog box opens.

14. Type the following information, and click **Next**.

Service port The port used by CFS to listen for service actions.

ACI port The port used by CFS to listen for actions.

15. Type the following information and click **Next**.

IDOL Server hostname The host name or IP address of the IDOL server that you want to index documents into.

ACI port The ACI port of the IDOL server.

The Pre-Installation Summary dialog box opens.

16. Review the installation settings. If necessary, click **Back** to go back and change any settings. If you are satisfied with the settings, click **Next**.

The connector is installed.

17. Read the information about OAuth configuration and click **Next**. For more information about configuring OAuth authentication, see [Configure OAuth Authentication, on page 44](#).

18. Click **Finish**.

Install Twitter Connector on Linux

To install the Twitter Connector, use the following procedure.

To install Twitter Connector on Linux

1. Open a terminal in the directory in which you have placed the installer, and run the following command:

```
./ConnectorName_VersionNumber_Platform.exe --mode text
```

2. Follow the on-screen instructions. For information about the options that are specified during installation, see [Install Twitter Connector on Windows](#). For more information about installing IDOL components, refer to the *IDOL Getting Started Guide*.

Configure the License Server Host and Port

Twitter Connector is licensed through License Server. In the Twitter Connector configuration file, specify the information required to connect to the License Server.

To specify the license server host and port

1. Open your configuration file in a text editor.
2. In the [License] section, modify the following parameters to point to your License Server.

LicenseServerHost The host name or IP address of your License Server.

LicenseServerACIPort The ACI port of your License Server.

For example:

```
[License]  
LicenseServerHost=licenses  
LicenseServerACIPort=20000
```

3. Save and close the configuration file.

Chapter 3: Configure Twitter Connector

This section describes how to configure the Twitter Connector.

• Twitter Connector Configuration File	18
• Modify Configuration Parameter Values	20
• Include an External Configuration File	21
• Encrypt Passwords	24
• Configure Client Authorization	26
• Register with a Distributed Connector	28
• Set Up Secure Communication	29
• Backup and Restore the Connector's State	31
• Validate the Configuration File	32

Twitter Connector Configuration File

You can configure the Twitter Connector by editing the configuration file. The configuration file is located in the connector's installation folder. You can modify the file with a text editor.

The parameters in the configuration file are divided into sections that represent connector functionality.

Some parameters can be set in more than one section of the configuration file. If a parameter is set in more than one section, the value of the parameter located in the most specific section overrides the value of the parameter defined in the other sections. For example, if a parameter can be set in "TaskName or FetchTasks or Default", the value in the TaskName section overrides the value in the FetchTasks section, which in turn overrides the value in the Default section. This means that you can set a default value for a parameter, and then override that value for specific tasks.

For information about the parameters that you can use to configure the Twitter Connector, refer to the *Twitter Connector Reference*.

Server Section

The [Server] section specifies the ACI port of the connector. It can also contain parameters that control the way the connector handles ACI requests.

Service Section

The [Service] section specifies the service port of the connector.

Actions Section

The [Actions] section contains configuration parameters that specify how the connector processes actions that are sent to the ACI port. For example, you can configure event handlers that run when an action starts, finishes, or encounters an error.

Logging Section

The [Logging] section contains configuration parameters that determine how messages are logged. You can use *log streams* to send different types of message to separate log files. The configuration file also contains a section to configure each of the log streams.

Connector Section

The [Connector] section contains parameters that control general connector behavior. For example, you can specify a schedule for the fetch tasks that you configure.

Default Section

The [Default] section is used to define default settings for configuration parameters. For example, you can specify default settings for the tasks in the [FetchTasks] section.

FetchTasks Section

The [FetchTasks] section lists the fetch tasks that you want to run. A *fetch task* is a task that retrieves data from a repository. Fetch tasks are usually run automatically by the connector, but you can also run a fetch task by sending an action to the connector's ACI port.

In this section, enter the total number of fetch tasks in the Number parameter and then list the tasks in consecutive order starting from 0 (zero). For example:

```
[FetchTasks]
Number=2
0=MyTask0
1=MyTask1
```

[TaskName] Section

The [TaskName] section contains configuration parameters that apply to a specific task. There must be a [TaskName] section for every task listed in the [FetchTasks] section.

Ingestion Section

The [Ingestion] section specifies where to send the data that is extracted by the connector.

You can send data to a Connector Framework Server, IDOL NiFi Ingest, or another connector. For more information about ingestion, see [Ingestion, on page 64](#).

DistributedConnector Section

The [DistributedConnector] section configures the connector to operate with the Distributed Connector. The Distributed Connector is an ACI server that distributes actions (synchronize, collect and so on) between multiple connectors.

For more information about the Distributed Connector, refer to the *Distributed Connector Administration Guide*.

ViewServer Section

The [ViewServer] section contains parameters that allow the connector's *view* action to use a View Server. If necessary, the View Server converts files to HTML so that they can be viewed in a web browser.

License Section

The [License] section contains details about the License server (the server on which your license file is located).

Document Tracking Section

The [DocumentTracking] section contains parameters that enable the tracking of documents through import and indexing processes.

Related Topics

- [Modify Configuration Parameter Values, below](#)
- [Customize Logging, on page 78](#)

Modify Configuration Parameter Values

You modify Twitter Connector configuration parameters by directly editing the parameters in the configuration file. When you set configuration parameter values, you must use UTF-8.

CAUTION: You must stop and restart Twitter Connector for new configuration settings to take

effect.

This section describes how to enter parameter values in the configuration file.

Enter Boolean Values

The following settings for Boolean parameters are interchangeable:

TRUE = true = ON = on = Y = y = 1

FALSE = false = OFF = off = N = n = 0

Enter String Values

To enter a comma-separated list of strings when one of the strings contains a comma, you can indicate the start and the end of the string with quotation marks, for example:

ParameterName=cat,dog,bird,"wing,beak",turtle

Alternatively, you can escape the comma with a backslash:

ParameterName=cat,dog,bird,wing\,beak,turtle

If any string in a comma-separated list contains quotation marks, you must put this string into quotation marks and escape each quotation mark in the string by inserting a backslash before it. For example:

ParameterName="\", \"<p>\"

Here, quotation marks indicate the beginning and end of the string. All quotation marks that are contained in the string are escaped.

Include an External Configuration File

You can share configuration sections or parameters between ACI server configuration files. The following sections describe different ways to include content from an external configuration file.

You can include a configuration file in its entirety, specified configuration sections, or a single parameter.

When you include content from an external configuration file, the `GetConfig` and `ValidateConfig` actions operate on the combined configuration, after any external content is merged in.

In the procedures in the following sections, you can specify external configuration file locations by using absolute paths, relative paths, and network locations. For example:

```
../sharedconfig.cfg  
K:\sharedconfig\sharedsettings.cfg  
\\example.com\shared\idol.cfg  
file://example.com/shared/idol.cfg
```

Relative paths are relative to the primary configuration file.

NOTE: You can use nested inclusions, for example, you can refer to a shared configuration file that references a third file. However, the external configuration files must not refer back to your original configuration file. These circular references result in an error, and Twitter Connector does not start.

Similarly, you cannot use any of these methods to refer to a different section in your primary configuration file.

Include the Whole External Configuration File

This method allows you to import the whole external configuration file at a specified point in your configuration file.

To include the whole external configuration file

1. Open your configuration file in a text editor.
2. Find the place in the configuration file where you want to add the external configuration file.
3. On a new line, type a left angle bracket (<), followed by the path to and name of the external configuration file, in quotation marks (""). You can use relative paths and network locations. For example:

```
< "K:\sharedconfig\sharedsettings.cfg"
```

4. Save and close the configuration file.

Include Sections of an External Configuration File

This method allows you to import one or more configuration sections (including the section headings) from an external configuration file at a specified point in your configuration file. You can include a whole configuration section in this way, but the configuration section name in the external file must exactly match what you want to use in your file. If you want to use a configuration section from the external file with a different name, see [Merge a Section from an External Configuration File, on the next page](#).

To include sections of an external configuration file

1. Open your configuration file in a text editor.
2. Find the place in the configuration file where you want to add the external configuration file section.
3. On a new line, type a left angle bracket (<), followed by the path of the external configuration file, in quotation marks (""). You can use relative paths and network locations. After the configuration file path, add the configuration section name that you want to include. For example:

```
< "K:\sharedconfig\extrasettings.cfg" [License]
```

NOTE: You cannot include a section that already exists in your configuration file.

4. Save and close the configuration file.

Include Parameters from an External Configuration File

This method allows you to import one or more parameters from an external configuration file at a specified point in your configuration file. You can import a single parameter or use wildcards to specify multiple parameters. The parameter values in the external file must match what you want to use in your file. This method does not import the section heading, such as [License] in the following examples.

To include parameters from an external configuration file

1. Open your configuration file in a text editor.
2. Find the place in the configuration file where you want to add the parameters from the external configuration file.
3. On a new line, type a left angle bracket (<), followed by the path of the external configuration file, in quotation marks (""). You can use relative paths and network locations. After the configuration file path, add the name of the section that contains the parameter, followed by the parameter name. For example:

```
< "license.cfg" [License] LicenseServerHost
```

To specify a default value for the parameter, in case it does not exist in the external configuration file, specify the configuration section, parameter name, and then an equals sign (=) followed by the default value. For example:

```
< "license.cfg" [License] LicenseServerHost=localhost
```

You can use wildcards to import multiple parameters, but this method does not support default values. The * wildcard matches zero or more characters. The ? wildcard matches any single character. Use the pipe character | as a separator between wildcard strings. For example:

```
< "license.cfg" [License] LicenseServer*
```

4. Save and close the configuration file.

Merge a Section from an External Configuration File

This method allows you to include a configuration section from an external configuration file as part of your Twitter Connector configuration file. For example, you might want to specify a standard SSL configuration section in an external file and share it between several servers. You can use this method if the configuration section that you want to import has a different name to the one you want to use.

To merge a configuration section from an external configuration file

1. Open your configuration file in a text editor.
2. Find or create the configuration section that you want to include from an external file. For example:

```
[SSLOptions1]
```

3. After the configuration section name, type a left angle bracket (<), followed by the path to and name of the external configuration file, in quotation marks (""). You can use relative paths and network locations. For example:

```
[SSLOptions1] < "../sharedconfig/ssloptions.cfg"
```

If the configuration section name in the external configuration file does not match the name that you want to use in your configuration file, specify the section to import after the configuration file name. For example:

```
[SSLOptions1] < "../sharedconfig/ssloptions.cfg" [SharedSSLOptions]
```

In this example, Twitter Connector uses the values in the [SharedSSLOptions] section of the external configuration file as the values in the [SSLOptions1] section of the Twitter Connector configuration file.

NOTE: You can include additional configuration parameters in the section in your file. If these parameters also exist in the imported external configuration file, Twitter Connector uses the values in the local configuration file. For example:

```
[SSLOptions1] < "ssloptions.cfg" [SharedSSLOptions]  
SSLCACertificatesPath=C:\IDOL\HTTPConnector\CACERTS\
```

4. Save and close the configuration file.

Encrypt Passwords

Micro Focus recommends that you encrypt all passwords that you enter into a configuration file.

Create a Key File

A key file is required to use AES encryption.

To create a new key file

1. Open a command-line window and change directory to the Twitter Connector installation folder.
2. At the command line, type:

```
autopassword -x -tAES -oKeyFile=./MyKeyFile.ky
```

A new key file is created with the name MyKeyFile.ky

CAUTION: To keep your passwords secure, you must protect the key file. Set the permissions on the key file so that only authorized users and processes can read it. Twitter Connector must be able to read the key file to decrypt passwords, so do not move or rename it.

Encrypt a Password

The following procedure describes how to encrypt a password.

To encrypt a password

1. Open a command-line window and change directory to the Twitter Connector installation folder.
2. At the command line, type:

```
autpassword -e -tEncryptionType [-oKeyFile] [-cFILE -sSECTION -pPARAMETER]  
PasswordString
```

where:

Option	Description
-t <i>EncryptionType</i>	The type of encryption to use: <ul style="list-style-type: none">• Basic• AES For example: -tAES NOTE: AES is more secure than basic encryption.
-oKeyFile	AES encryption requires a key file. This option specifies the path and file name of a key file. The key file must contain 64 hexadecimal characters. For example: -oKeyFile=./key.ky
-cFILE - sSECTION - pPARAMETER	(Optional) You can use these options to write the password directly into a configuration file. You must specify all three options. <ul style="list-style-type: none">• -c. The configuration file in which to write the encrypted password.• -s. The name of the section in the configuration file in which to write the password.• -p. The name of the parameter in which to write the encrypted password. For example: -c./Config.cfg -sMyTask -pPassword
<i>PasswordString</i>	The password to encrypt.

For example:

```
autpassword -e -tBASIC MyPassword
```

```
autpassword -e -tAES -oKeyFile=./key.ky MyPassword  
  
autpassword -e -tAES -oKeyFile=./key.ky -c./Config.cfg -sDefault -pPassword  
MyPassword
```

The password is returned, or written to the configuration file.

Decrypt a Password

The following procedure describes how to decrypt a password.

To decrypt a password

1. Open a command-line window and change directory to the Twitter Connector installation folder.
2. At the command line, type:

```
autpassword -d -tEncryptionType [-oKeyFile] PasswordString
```

where:

Option	Description
-t <i>EncryptionType</i>	The type of encryption: <ul style="list-style-type: none">• Basic• AES For example: -tAES
-oKeyFile	AES encryption and decryption requires a key file. This option specifies the path and file name of the key file used to decrypt the password. For example: -oKeyFile=./key.ky
<i>PasswordString</i>	The password to decrypt.

For example:

```
autpassword -d -tBASIC 9t3M3t7awt/J8A  
autpassword -d -tAES -oKeyFile=./key.ky 9t3M3t7awt/J8A
```

The password is returned in plain text.

Configure Client Authorization

You can configure Twitter Connector to authorize different operations for different connections.

Authorization roles define a set of operations for a set of users. You define the operations by using the `StandardRoles` configuration parameter, or by explicitly defining a list of allowed actions in the

Actions and ServiceActions parameters. You define the authorized users by using a client IP address, SSL identities, and GSS principals, depending on your security and system configuration.

For more information about the available parameters, see the *Twitter Connector Reference*.

IMPORTANT: To ensure that Twitter Connector allows only the options that you configure in [AuthorizationRoles], make sure that you delete any deprecated *RoLeClients* parameters from your configuration (where *RoLe* corresponds to a standard role name, for example AdminClients).

To configure authorization roles

1. Open your configuration file in a text editor.
2. Find the [AuthorizationRoles] section, or create one if it does not exist.
3. In the [AuthorizationRoles] section, list the user authorization roles that you want to create. For example:

```
[AuthorizationRoles]
0=AdminRole
1=UserRole
```

4. Create a section for each authorization role that you listed. The section name must match the name that you set in the [AuthorizationRoles] list. For example:
5. In the section for each role, define the operations that you want the role to be able to perform. You can set StandardRoles to a list of appropriate values, or specify an explicit list of allowed actions by using Actions, and ServiceActions. For example:

```
[AdminRole]
```

```
[AdminRole]
StandardRoles=Admin,ServiceControl,ServiceStatus
```

```
[UserRole]
Actions=GetVersion
ServiceActions=GetStatus
```

NOTE: The standard roles do not overlap. If you want a particular role to be able to perform all actions, you must include all the standard roles, or ensure that the clients, SSL identities, and so on, are assigned to all relevant roles.

6. In the section for each role, define the access permissions for the role, by setting Clients, SSLIdentities, and GSSPrincipals, as appropriate. If an incoming connection matches one of the allowed clients, principals, or SSL identities, the user has permission to perform the operations allowed by the role. For example:

```
[AdminRole]
StandardRoles=Admin,ServiceControl,ServiceStatus
Clients=localhost
SSLIdentities=admin.example.com
```

7. Save and close the configuration file.
8. Restart Twitter Connector for your changes to take effect.

IMPORTANT: If you do not provide any authorization roles for a standard role, Twitter Connector uses the default client authorization for the role (localhost for Admin and ServiceControl, all clients for Query and ServiceStatus). If you define authorization only by actions, Micro Focus recommends that you configure an authorization role that disallows all users for all roles by default. For example:

```
[ForbidAllRoles]
StandardRoles=*
Clients=""
```

This configuration ensures that Twitter Connector uses only your action-based authorizations.

Register with a Distributed Connector

To receive actions from a Distributed Connector, a connector must register with the Distributed Connector and join a *connector group*. A connector group is a group of similar connectors. The connectors in a group must be of the same type (for example, all HTTP Connectors), and must be able to access the same repository.

To configure a connector to register with a Distributed Connector, follow these steps. For more information about the Distributed Connector, refer to the *Distributed Connector Administration Guide*.

To register with a Distributed Connector

1. Stop the connector.
2. Open the connector's configuration file in a text editor.
3. In the [DistributedConnector] section, set the following parameters:

RegisterConnector	(Required) To register with a Distributed Connector, set this parameter to true .
HostN	(Required) The host name or IP address of the Distributed Connector.
PortN	(Required) The ACI port of the Distributed Connector.
DataPortN	(Optional) The data port of the Distributed Connector.
ConnectorGroup	(Required) The name of the connector group to join. The value of this parameter is passed to the Distributed Connector.
ConnectorPriority	(Optional) The Distributed Connector can distribute actions to connectors based on a priority value. The lower the value assigned to ConnectorPriority, the higher the probability that an action is

assigned to this connector, rather than other connectors in the same connector group.

SharedPath (Optional) The location of a shared folder that is accessible to all of the connectors in the ConnectorGroup. This folder is used to store the connectors' datastore files, so that whichever connector in the group receives an action, it can access the information required to complete it. If you set the `DataPortN` parameter, the datastore file is streamed directly to the Distributed Connector, and this parameter is ignored.

4. Save and close the configuration file.
5. Start the connector.

The connector registers with the Distributed Connector. When actions are sent to the Distributed Connector for the connector group that you configured, they are forwarded to this connector or to another connector in the group.

Set Up Secure Communication

You can configure Secure Socket Layer (SSL) connections between the connector and other ACI servers.

Configure Outgoing SSL Connections

To configure the connector to send data to other components (for example Connector Framework Server) over SSL, follow these steps.

To configure outgoing SSL connections

1. Open the Twitter Connector configuration file in a text editor.
2. Specify the name of a section in the configuration file where the SSL settings are provided:
 - To send data to an ingestion server over SSL, set the `IngestSSLConfig` parameter in the `[Ingestion]` section. To send data from a single fetch task to an ingestion server over SSL, set `IngestSSLConfig` in a `[TaskName]` section.
 - To send data to a Distributed Connector over SSL, set the `SSLConfig` parameter in the `[DistributedConnector]` section.
 - To send data to a View Server over SSL, set the `SSLConfig` parameter in the `[ViewServer]` section.

You can use the same settings for each connection. For example:

```
[Ingestion]
IngestSSLConfig=SSLOptions
```

```
[DistributedConnector]
SSLConfig=SSLOptions
```

3. Create a new section in the configuration file. The name of the section must match the name you specified in the `IngestSSLConfig` or `SSLConfig` parameter. Then specify the SSL settings to use.

`SSLMethod` The SSL protocol to use.

`SSLCertificate` (Optional) The SSL certificate to use (in PEM format).

`SSLPrivateKey` (Optional) The private key for the SSL certificate (in PEM format).

For example:

```
[SSLOptions]
SSLMethod=TLSV1.3
SSLCertificate=host1.crt
SSLPrivateKey=host1.key
```

4. Save and close the configuration file.
5. Restart the connector.

Related Topics

- [Start and Stop the Connector, on page 33](#)

Configure Incoming SSL Connections

To configure a connector to accept data sent to its ACI port over SSL, follow these steps.

To configure an incoming SSL Connection

1. Stop the connector.
2. Open the configuration file in a text editor.
3. In the `[Server]` section set the `SSLConfig` parameter to specify the name of a section in the configuration file for the SSL settings. For example:

```
[Server]
SSLConfig=SSLOptions
```

4. Create a new section in the configuration file (the name must match the name you used in the `SSLConfig` parameter). Then, use the SSL configuration parameters to specify the details for the connection. You must set the following parameters:

`SSLMethod` The SSL protocol to use.

`SSLCertificate` The SSL certificate to use (in PEM format).

`SSLPrivateKey` The private key for the SSL certificate (in PEM format).

For example:

```
[SSLOptions]
SSLMethod=TLSV1.3
SSLCertificate=host1.crt
SSLPrivateKey=host1.key
```

5. Save and close the configuration file.
6. Restart the connector.

Related Topics

- [Start and Stop the Connector, on page 33](#)

Backup and Restore the Connector's State

After configuring a connector, and while the connector is running, you can create a backup of the connector's state. In the event of a failure, you can restore the connector's state from the backup.

To create a backup, use the `backupServer` action. The `backupServer` action saves a ZIP file to a path that you specify. The backup includes:

- a copy of the `actions` folder, which stores information about actions that have been queued, are running, and have finished.
- a copy of the configuration file.
- a copy of the connector's datastore files, which contain information about the files, records, or other data that the connector has retrieved from a repository.

Backup a Connector's State

To create a backup of the connectors state

- In the address bar of your Web browser, type the following action and press **ENTER**:

```
http://host:port/action=backupServer&path=path
```

where,

host The host name or IP address of the machine where the connector is running.

port The connector's ACI port.

path The folder where you want to save the backup.

For example:

```
http://localhost:1234/action=backupServer&path=./backups
```

Restore a Connector's State

To restore a connector's state

- In the address bar of your Web browser, type the following action and press **ENTER**:

`http://host:port/action=restoreServer&filename=filename`

where,

host The host name or IP address of the machine where the connector is running.

port The connector's ACI port.

filename The path of the backup that you created.

For example:

`http://localhost:1234/action=restoreServer&filename=./backups/filename.zip`

Validate the Configuration File

You can use the `ValidateConfig` service action to check for errors in the configuration file.

NOTE: For the `ValidateConfig` action to validate a configuration section, Twitter Connector must have previously read that configuration. In some cases, the configuration might be read when a task is run, rather than when the component starts up. In these cases, `ValidateConfig` reports any unread sections of the configuration file as unused.

To validate the configuration file

- Send the following action to Twitter Connector:

`http://Host:ServicePort/action=ValidateConfig`

where:

Host is the host name or IP address of the machine where Twitter Connector is installed.

ServicePort is the service port, as specified in the `[Service]` section of the configuration file.

Chapter 4: Start and Stop the Connector

This section describes how to start and stop the Twitter Connector.

• Start the Connector	33
• Verify that Twitter Connector is Running	34
• Stop the Connector	34

NOTE: You must start and stop the Connector Framework Server separately from the Twitter Connector.

Start the Connector

After you have installed and configured a connector, you are ready to run it. Start the connector using one of the following methods.

Start the Connector on Windows

To start the connector using Windows Services

1. Open the Windows Services dialog box.
2. Select the connector service, and click **Start**.
3. Close the Windows Services dialog box.

To start the connector by running the executable

- In the connector installation directory, double-click the connector executable file.

Start the Connector on UNIX

To start the connector on a UNIX operating system, follow these steps.

To start the connector using the UNIX start script

1. Change to the installation directory.
2. Enter the following command:

```
./startconnector.sh
```
3. If you want to check the Twitter Connector service is running, enter the following command:

```
ps -aef | grep ConnectorInstallName
```

This command returns the Twitter Connector service process ID number if the service is running.

Verify that Twitter Connector is Running

After starting Twitter Connector, you can run the following actions to verify that Twitter Connector is running.

- [GetStatus](#)
- [GetLicenseInfo](#)

GetStatus

You can use the `GetStatus` service action to verify the Twitter Connector is running. For example:

```
http://Host:ServicePort/action=GetStatus
```

NOTE: You can send the `GetStatus` action to the ACI port instead of the service port. The `GetStatus` ACI action returns information about the Twitter Connector setup.

GetLicenseInfo

You can send a `GetLicenseInfo` action to Twitter Connector to return information about your license. This action checks whether your license is valid and returns the operations that your license includes.

Send the `GetLicenseInfo` action to the Twitter Connector ACI port. For example:

```
http://Host:ACIport/action=GetLicenseInfo
```

The following result indicates that your license is valid.

```
<autn:license>  
  <autn:validlicense>true</autn:validlicense>  
</autn:license>
```

As an alternative to submitting the `GetLicenseInfo` action, you can view information about your license, and about licensed and unlicensed actions, on the **License** tab in the Status section of IDOL Admin.

Stop the Connector

You must stop the connector before making any changes to the configuration file.

To stop the connector using Windows Services

1. Open the Windows Services dialog box.
2. Select the ***ConnectorInstallName*** service, and click **Stop**.
3. Close the Windows Services dialog box.

To stop the connector by sending an action to the service port

- Type the following command in the address bar of your Web browser, and press ENTER:

`http://host:ServicePort/action=stop`

host The IP address or host name of the machine where the connector is running.

ServicePort The connector's service port (specified in the [Service] section of the connector's configuration file).

Chapter 5: Send Actions to Twitter Connector

This section describes how to send actions to Twitter Connector.

• Send Actions to Twitter Connector	36
• Asynchronous Actions	36
• Store Action Queues in an External Database	38
• Store Action Queues in Memory	40
• Use XSL Templates to Transform Action Responses	42

Send Actions to Twitter Connector

Twitter Connector actions are HTTP requests, which you can send, for example, from your web browser. The general syntax of these actions is:

`http://host:port/action=action¶meters`

where:

<i>host</i>	is the IP address or name of the machine where Twitter Connector is installed.
<i>port</i>	is the Twitter Connector ACI port. The ACI port is specified by the Port parameter in the [Server] section of the Twitter Connector configuration file. For more information about the Port parameter, see the <i>Twitter Connector Reference</i> .
<i>action</i>	is the name of the action you want to run.
<i>parameters</i>	are the required and optional parameters for the action.

NOTE: Separate individual parameters with an ampersand (&). Separate parameter names from values with an equals sign (=). You must percent-encode all parameter values.

For more information about actions, see the *Twitter Connector Reference*.

Asynchronous Actions

When you send an asynchronous action to Twitter Connector, the connector adds the task to a queue and returns a token. Twitter Connector performs the task when a thread becomes available. You can use the token with the QueueInfo action to check the status of the action and retrieve the results of the action.

Most of the features provided by the connector are available through `action=fetch`, so when you use the `QueueInfo` action, query the `fetch` action queue, for example:

```
/action=QueueInfo&QueueName=Fetch&QueueAction=GetStatus
```

Check the Status of an Asynchronous Action

To check the status of an asynchronous action, use the token that was returned by Twitter Connector with the `QueueInfo` action. For more information about the `QueueInfo` action, refer to the *Twitter Connector Reference*.

To check the status of an asynchronous action

- Send the `QueueInfo` action to Twitter Connector with the following parameters.

QueueName	The name of the action queue that you want to check.
QueueAction	The action to perform. Set this parameter to GetStatus .
Token	(Optional) The token that the asynchronous action returned. If you do not specify a token, Twitter Connector returns the status of every action in the queue.

For example:

```
/action=QueueInfo&QueueName=fetch&QueueAction=getstatus&Token=...
```

Cancel an Asynchronous Action that is Queued

To cancel an asynchronous action that is waiting in a queue, use the following procedure.

To cancel an asynchronous action that is queued

- Send the `QueueInfo` action to Twitter Connector with the following parameters.

QueueName	The name of the action queue that contains the action to cancel.
QueueAction	The action to perform . Set this parameter to Cancel .
Token	The token that the asynchronous action returned.

For example:

```
/action=QueueInfo&QueueName=fetch&QueueAction=Cancel&Token=...
```

Stop an Asynchronous Action that is Running

You can stop an asynchronous action at any point.

To stop an asynchronous action that is running

- Send the QueueInfo action to Twitter Connector with the following parameters.

QueueName	The name of the action queue that contains the action to stop.
QueueAction	The action to perform. Set this parameter to Stop .
Token	The token that the asynchronous action returned.

For example:

```
/action=QueueInfo&QueueName=fetch&QueueAction=Stop&Token=...
```

Store Action Queues in an External Database

Twitter Connector provides asynchronous actions. Each asynchronous action has a queue to store requests until threads become available to process them. You can configure Twitter Connector to store these queues either in an internal database file, or in an external database hosted on a database server.

The default configuration stores queues in an internal database. Using this type of database does not require any additional configuration.

You might want to store the action queues in an external database so that several servers can share the same queues. In this configuration, sending a request to any of the servers adds the request to the shared queue. Whenever a server is ready to start processing a new request, it takes the next request from the shared queue, runs the action, and adds the results of the action back to the shared database so that they can be retrieved by any of the servers. You can therefore distribute requests between components without configuring a Distributed Action Handler (DAH).

NOTE: You cannot use multiple servers to process a single request. Each request is processed by one server.

NOTE: Although you can configure several connectors to share the same action queues, the connectors do not share fetch task data. If you share action queues between several connectors and distribute synchronize actions, the connector that processes a synchronize action cannot determine which items the other connectors have retrieved. This might result in some documents being ingested several times.

Prerequisites

- Supported databases:
 - PostgreSQL 9.0 or later.
 - MySQL 5.0 or later.
- If you use PostgreSQL, you must set the PostgreSQL ODBC driver setting MaxVarChar to 0

(zero). If you use a DSN, you can configure this parameter when you create the DSN. Otherwise, you can set the `MaxVarcharSize` parameter in the connection string.

Configure Twitter Connector

To configure Twitter Connector to use a shared action queue, follow these steps.

To store action queues in an external database

1. Stop Twitter Connector, if it is running.
2. Open the Twitter Connector configuration file.
3. Find the relevant section in the configuration file:
 - To store queues for all asynchronous actions in the external database, find the `[Actions]` section.
 - To store the queue for a single asynchronous action in the external database, find the section that configures that action.
4. Set the following configuration parameters.

`AsyncStoreLibraryDirectory` The path of the directory that contains the library to use to connect to the database. Specify either an absolute path, or a path relative to the server executable file.

`AsyncStoreLibraryName` The name of the library to use to connect to the database. You can omit the file extension. The following libraries are available:

- `postgresAsyncStoreLibrary` - for connecting to a PostgreSQL database.
- `mysqlAsyncStoreLibrary` - for connecting to a MySQL database.

`ConnectionString` The connection string to use to connect to the database. The user that you specify must have permission to create tables in the database. For example:

`ConnectionString=DSN=ActionStore`

or

`ConnectionString=Driver={PostgreSQL};
Server=10.0.0.1; Port=9876;
Database=SharedActions; Uid=user; Pwd=password;
MaxVarcharSize=0;`

If your connection string includes a password, Micro Focus recommends encrypting the value of the parameter before

entering it into the configuration file. Encrypt the entire connection string. For information about how to encrypt parameter values, see [Encrypt Passwords, on page 24](#).

For example:

```
[Actions]
AsyncStoreLibraryDirectory=acidlls
AsyncStoreLibraryName=postgresAsyncStoreLibrary
ConnectionString=DSN=ActionStore
```

5. You can use the same database to store action queues for more than one type of IDOL component (for example, a group of File System Connectors and a group of Media Servers). To use a database for more than one type of component, set the following parameter in the [Actions] section of the configuration file.

DatastoreSharingGroupName	The group of components to share actions with. You can set this parameter to any string, but the value must be the same for each server in the group. For example, to configure several Twitter Connectors to share their action queues, set this parameter to the same value in every Twitter Connector configuration. Micro Focus recommends setting this parameter to the name of the component.
----------------------------------	---

CAUTION: Do not configure different components (for example, two different types of connector) to share the same action queues. This will result in unexpected behavior.

For example:

```
[Actions]
...
DatastoreSharingGroupName=MediaServer
```

6. Save and close the configuration file.

When you start Twitter Connector it connects to the shared database.

Store Action Queues in Memory

Twitter Connector provides asynchronous actions. Each asynchronous action has a queue to store requests until threads become available to process them. These queues are usually stored in a datastore file or in a database hosted on a database server, but in some cases you can increase performance by storing these queues in memory.

NOTE: Storing action queues in memory improves performance only when the server receives large numbers of actions that complete quickly. Before storing queues in memory, you should also

consider the following:

- The queues (including queued actions and the results of finished actions) are lost if Twitter Connector stops unexpectedly, for example due to a power failure or the component being forcibly stopped. This could result in some requests being lost, and if the queues are restored to a previous state some actions could run more than once.
- Storing action queues in memory prevents multiple instances of a component being able to share the same queues.
- Storing action queues in memory increases memory use, so please ensure that the server has sufficient memory to complete actions and store the action queues.

If you stop Twitter Connector cleanly, Twitter Connector writes the action queues from memory to disk so that it can resume processing when it is next started.

To configure Twitter Connector to store asynchronous action queues in memory, follow these steps.

To store action queues in memory

1. Stop Twitter Connector, if it is running.
2. Open the Twitter Connector configuration file and find the [Actions] section.
3. If you have set any of the following parameters, remove them:
 - AsyncStoreLibraryDirectory
 - AsyncStoreLibraryName
 - ConnectionString
 - UseStringentDatastore
4. Set the following configuration parameters.

UseInMemoryDatastore	A Boolean value that specifies whether to keep the queues for asynchronous actions in memory. Set this parameter to TRUE .
InMemoryDatastoreBackupIntervalMins	(Optional) The time interval (in minutes) at which the action queues are written to disk. Writing the queues to disk can reduce the number of queued actions that would be lost if Twitter Connector stops unexpectedly, but configuring a frequent backup will increase the load on the datastore and might reduce performance.

For example:

```
[Actions]
UseInMemoryDatastore=TRUE
InMemoryDatastoreBackupIntervalMins=30
```

5. Save and close the configuration file.

When you start Twitter Connector, it stores action queues in memory.

Use XSL Templates to Transform Action Responses

You can transform the action responses returned by Twitter Connector using XSL templates. You must write your own XSL templates and save them with either an `.xsl` or `.tmpl` file extension.

After creating the templates, you must configure Twitter Connector to use them, and then apply them to the relevant actions.

To enable XSL transformations

1. Ensure that the `autnxs1t` library is located in the same directory as your configuration file. If the library is not included in your installation, you can obtain it from Micro Focus Support.
2. Open the Twitter Connector configuration file in a text editor.
3. In the `[Server]` section, ensure that the `XSLTemplates` parameter is set to **true**.

CAUTION: If `XSLTemplates` is set to **true** and the `autnxs1t` library is not present in the same directory as the configuration file, the server will not start.

4. (Optional) In the `[Paths]` section, set the `TemplateDirectory` parameter to the path to the directory that contains your XSL templates. The default directory is `acitemplates`.
5. Save and close the configuration file.
6. Restart Twitter Connector for your changes to take effect.

To apply a template to action output

- Add the following parameters to the action:

Template	The name of the template to use to transform the action output. Exclude the folder path and file extension.
ForceTemplateRefresh	(Optional) If you modified the template after the server started, set this parameter to true to force the ACI server to reload the template from disk rather than from the cache.

For example:

```
action=QueueInfo&QueueName=Fetch
      &QueueAction=GetStatus
      &Token=...
      &Template=myTemplate
```

In this example, Twitter Connector applies the XSL template `myTemplate` to the response from a `QueueInfo` action.

NOTE: If the action returns an error response, Twitter Connector does not apply the XSL template.

Example XSL Templates

Twitter Connector includes the following sample XSL templates, in the `acitemplates` folder:

XSL Template	Description
LuaDebug	Transforms the output from the LuaDebug action, to assist with debugging Lua scripts.

Chapter 6: Use the Connector

This section describes how to use the connector.

• Configure OAuth Authentication	44
• Retrieve Information from a Twitter Stream	45
• Retrieve Information from a Twitter Search	47
• Retrieve Information from a User's Timeline	48
• Document Fields	49
• Schedule Fetch Tasks	49
• Troubleshoot the Connector	51

Configure OAuth Authentication

To configure the connector to authenticate with Twitter, use the following procedure.

To configure OAuth authentication with Twitter

1. Go to the Twitter web site and create an application to represent the connector. Twitter will provide an application key and an application secret.
2. Open the folder where you installed the connector.
3. Open the file `oauth_tool.cfg` in a text editor.
4. In the [Default] section, specify any SSL or proxy settings necessary to connect to Twitter:

SSLMethod The version of SSL/TLS to use.

ProxyHost The host name or IP address of the proxy server that the connector must use.

ProxyPort The port of the proxy server that the connector must use.

For example:

```
SSLMethod=SSLV23
ProxyHost=10.0.0.1
ProxyPort=8080
```

5. In the [OAuthTool1] section, set the following parameters:

AppKey The application key that was provided when you set up an application to represent the connector.

AppSecret The application secret that was provided when you set up an application to represent the connector.

Do not modify the other parameters in this section.

6. Open a command-line window and run `oauth_tool.exe`.

Your default web browser opens to the Twitter web site, which asks you to authorize the application to access Twitter.

7. Authorize the application by entering your credentials.

The Twitter Web site provides an authorization code.

8. Type the authorization code into the command-line window where the OAuth tool is running and press ENTER.

The OAuth tool creates a file named `oauth.cfg`, which contains the parameters that the connector requires to authenticate with Twitter. You can include these parameters in the connector configuration file as follows (see [Include an External Configuration File, on page 21](#)):

```
[MyTask] < "oauth.cfg" [OAUTH]
```

The OAuth tool also prints the parameters it has set to the command-line window.

9. You can now configure a task to retrieve data from Twitter. See [Retrieve Information from a Twitter Stream, below](#), [Retrieve Information from a Twitter Search, on page 47](#), or [Retrieve Information from a User's Timeline, on page 48](#).

Retrieve Information from a Twitter Stream

To automatically start the synchronize action and retrieve tweets from a Twitter stream, create a new fetch task using the following procedure.

NOTE: Twitter allows a user account to connect to only one stream at a time. If you run multiple fetch tasks concurrently (by setting the `TaskThreads` parameter) and these tasks connect to Twitter streams, Twitter might close the connections.

To retrieve information from a Twitter stream

1. Before creating a fetch task, configure OAuth authentication by following the procedure described in [Configure OAuth Authentication, on the previous page](#).
2. Stop the connector.
3. Open the connector's configuration file in a text editor.
4. In the `[Ingestion]` section of the configuration file, set the `IngestBatchSize` parameter:

IngestBatchSize The number of documents to send to the ingestion server in each batch. If

you are processing large numbers of streamed tweets and sending the information to CFS, Micro Focus recommends setting this parameter to **500** or greater. The Twitter Connector sends metadata-only documents to CFS, and CFS can process large batches more efficiently than small batches.

5. In the [FetchTasks] section of the configuration file, specify the number of fetch tasks using the Number parameter. If you are configuring the first fetch task, type **Number=1**. If one or more fetch tasks have already been configured, increase the value of the Number parameter by one (1). Below the Number parameter, specify the names of the fetch tasks, starting from zero (0). For example:

```
[FetchTasks]
Number=1
0=MyTask
```

6. Below the [FetchTasks] section, create a new *TaskName* section. The name of the section must match the name of the new fetch task. For example:

```
[FetchTasks]
Number=1
0=MyTask
```

```
[MyTask]
```

7. In the new section, set the following parameter:

StreamType	A string that specifies the tweets that you want to retrieve. <ul style="list-style-type: none">• statuses/filter. The connector retrieves any tweet that matches Language (if set) and FilterLevel, and at least one of the parameters Follow, Location, or Track (see the following steps)• statuses/sample. (This is the default) The connector retrieves a random sample of public tweets that match both Language (if set) and FilterLevel. The Follow, Location, and Track parameters are ignored.
------------	---

8. If you are using the statuses/filter stream type, set one or more of the following parameters to retrieve tweets related to specific users, geographic regions, or keywords. If you do not set any of these parameters, the connector does not retrieve any tweets.

Follow	A comma-separated list of Twitter user names or IDs. Do not include the '@' character before the Twitter user name.
Location	A comma-separated list of longitude and latitude values to identify specific geographic regions. Each region is a square, defined by four values in the following order: [Longitude West], [Latitude South], [Longitude East], [Latitude North].
Track	A comma-separated list of keywords.

For more information about these parameters, refer to the *Twitter Connector Reference*.

9. (Optional) To retrieve only those tweets that match specific languages, set the `Language` parameter to a comma-separated list of BCP 47 language codes that correspond to any of the languages listed on the Twitter advanced search page (<https://twitter.com/search-advanced>). For example, to retrieve only those tweets that Twitter has identified to be written in English, set `Language=en`.
10. (Optional) To retrieve only those tweets that match or exceed a specific filter level, set the `FilterLevel` configuration parameter. For example, `FilterLevel=medium`.
11. Save and close the configuration file. You can now start the connector.

Retrieve Information from a Twitter Search

To automatically start the synchronize action and retrieve tweets from a Twitter search, create a new fetch task by following these steps. The connector runs each fetch task automatically, based on the schedule that is configured in the configuration file.

To retrieve information from a Twitter search

1. Before creating a fetch task, configure OAuth authentication by following the procedure described in [Configure OAuth Authentication, on page 44](#).
2. Stop the connector.
3. Open the connector's configuration file in a text editor.
4. In the `[FetchTasks]` section of the configuration file, specify the number of fetch tasks using the `Number` parameter. If you are configuring the first fetch task, type `Number=1`. If one or more fetch tasks have already been configured, increase the value of the `Number` parameter by one (1). Below the `Number` parameter, specify the names of the fetch tasks, starting from zero (0). For example:

```
[FetchTasks]
Number=1
0=MyTask
```

NOTE: The fetch tasks that you configure are run in sequence. To run tasks in parallel, set the `TaskThreads` parameter.

5. Below the `[FetchTasks]` section, create a new *TaskName* section. The name of the section must match the name of the new fetch task. For example:

```
[FetchTasks]
Number=1
0=MyTask

[MyTask]
```

6. In the new section, set the following parameters:

Search	The query to use for searching Twitter.
ResultType	(Optional) The type of results to return when the connector searches Twitter. <ul style="list-style-type: none">• recent - return only the most recent results• popular - return only the most popular results• mixed - return popular and recent results
MaxResults	(Optional) The maximum number of tweets to ingest.

7. (Optional) If the connector machine is behind a proxy server, you might need to specify the host name, port, user name, and password for your proxy server by setting the parameters ProxyHost, ProxyPort, ProxyUsername, and ProxyPassword.
8. Save and close the configuration file. You can now start the connector.

Retrieve Information from a User's Timeline

To automatically start the synchronize action and retrieve tweets from a user's timeline, create a new fetch task by following these steps. The connector runs each fetch task automatically, based on the schedule that is configured in the configuration file.

To retrieve information from a user's timeline

1. Before creating a fetch task, configure OAuth authentication by following the procedure described in [Configure OAuth Authentication, on page 44](#).
2. Stop the connector.
3. Open the connector's configuration file in a text editor.
4. In the [FetchTasks] section of the configuration file, specify the number of fetch tasks using the Number parameter. If you are configuring the first fetch task, type **Number=1**. If one or more fetch tasks have already been configured, increase the value of the Number parameter by one (1). Below the Number parameter, specify the names of the fetch tasks, starting from zero (0). For example:

```
[FetchTasks]
Number=1
0=MyTask
```

NOTE: The fetch tasks that you configure are run in sequence. To run tasks in parallel, set the TaskThreads parameter.

5. Below the [FetchTasks] section, create a new *TaskName* section. The name of the section must match the name of the new fetch task. For example:


```
[FetchTasks]
Number=1
0=MyTask
```

[MyTask]

6. In the new section, set the following parameters:

`TimelineScreenName` The screen name of the user from which to retrieve tweets.

7. (Optional) Due to limitations of the Twitter API, the connector can only retrieve the most recent 3200 tweets made by the user. On the initial synchronize cycle, the connector retrieves the 3200 most recent tweets. On incremental synchronize cycles the connector retrieves the tweets made since the last synchronize cycle (up to a maximum of 3200). Micro Focus therefore recommends that you schedule the fetch task so that there are fewer than 3200 tweets between synchronize cycles. To specify how often the task runs, set the parameter `ScheduleRepeatSecs`.

`ScheduleRepeatSecs` The interval (in seconds) from the start of one scheduled synchronize cycle to the start of the next.

8. (Optional) If the connector machine is behind a proxy server, you might need to specify the host name, port, user name, and password for your proxy server by setting the parameters `ProxyHost`, `ProxyPort`, `ProxyUsername`, and `ProxyPassword`.
9. Save and close the configuration file. You can now start the connector.

Document Fields

The Twitter Connector automatically populates the following document fields:

- `DRREFERENCE`, with the tweet ID.
- `DRETITLE`, with a direct URL to the tweet.
- `DREDATE`, with the epoch time when the tweet was created.
- `DRECONTENT`, with the text from the tweet.

Schedule Fetch Tasks

The connector automatically runs the fetch tasks that you have configured, based on the schedule in the configuration file. To modify the schedule, follow these steps.

To schedule fetch tasks

1. Stop the connector.
2. Open the connector's configuration file in a text editor.

3. Find the [Connector] section.
4. The EnableScheduledTasks parameter specifies whether the connector should automatically run the fetch tasks that have been configured in the [FetchTasks] section. To run the tasks, set this parameter to true. For example:

```
[Connector]
EnableScheduledTasks=True
```

5. In the [Connector] section, set the following parameters:

ScheduleStartTime	The start time for the fetch task, the first time it runs after you start the connector. The connector runs subsequent synchronize cycles after the interval specified by ScheduleRepeatSecs. Specify the start time in the format H[H]:MM[:SS]. To start running tasks as soon as the connector starts, do not set this parameter or use the value now .
ScheduleRepeatSecs	The interval (in seconds) from the start of one scheduled synchronize cycle to the start of the next. If a previous synchronize cycle is still running when the interval elapses, the connector queues a maximum of one action.
ScheduleCycles	The number of times that each fetch task is run. To run the tasks continuously until the connector is stopped, set this parameter to -1 . To run each task only one time, set this parameter to 1 .

For example:

```
[Connector]
EnableScheduledTasks=True
ScheduleStartTime=15:00:00
ScheduleRepeatSecs=3600
ScheduleCycles=-1
```

6. (Optional) To run a specific fetch task on a different schedule, you can override these parameters in a *TaskName* section of the configuration file. For example:

```
[Connector]
EnableScheduledTasks=TRUE
ScheduleStartTime=15:00:00
ScheduleRepeatSecs=3600
ScheduleCycles=-1
```

...

```
[FetchTasks]
Number=2
0=MyTask0
1=MyTask1
...
```

```
[MyTask1]
ScheduleStartTime=16:00:00
ScheduleRepeatSecs=60
ScheduleCycles=-1
```

In this example, MyTask0 follows the schedule defined in the [Connector] section, and MyTask1 follows the scheduled defined in the [MyTask1] *TaskName* section.

7. Save and close the configuration file. You can now start the connector.

Related Topics

- [Start and Stop the Connector, on page 33](#)

Troubleshoot the Connector

The connector returns an HTTP 401 (unauthorized) error

Authentication can fail if the system clock is incorrect on the machine hosting the connector. If you encounter this error check that the time is set correctly.

Chapter 7: Manipulate Documents

This section describes how to manipulate documents that are created by the connector and sent for ingestion.

• Introduction	52
• Add a Field to Documents using an Ingest Action	52
• Customize Document Processing	53
• Standardize Field Names	54
• Run Lua Scripts	59
• Example Lua Scripts	62

Introduction

IDOL Connectors retrieve data from repositories and create documents that are sent to Connector Framework Server or another connector. You might want to manipulate the documents that are created. For example, you can:

- Add or modify document fields, to change the information that is indexed into IDOL Server.
- Add fields to a document to customize the way the document is processed by CFS.
- Convert information into another format so that it can be inserted into another repository by a connector that supports the Insert action.

When a connector sends documents to CFS, the documents only contain metadata extracted from the repository by the connector (for example, the location of the original files). To modify data extracted by KeyView, you must modify the documents using CFS. For information about how to manipulate documents with CFS, refer to the *Connector Framework Server Administration Guide*.

Add a Field to Documents using an Ingest Action

To add a field to all documents retrieved by a fetch task, or all documents sent for ingestion, you can use an Ingest Action.

NOTE: To add a field only to selected documents, use a Lua script (see [Run Lua Scripts, on page 59](#)). For an example Lua script that demonstrates how to add a field to a document, see [Add a Field to a Document, on page 62](#).

To add a field to documents using an Ingest Action

1. Open the connector's configuration file.
2. Find one of the following sections in the configuration file:
 - To add the field to all documents retrieved by a specific fetch task, find the `[TaskName]` section.
 - To add a field to all documents that are sent for ingestion, find the `[Ingestion]` section.

NOTE: If you set the `IngestActions` parameter in a `[TaskName]` section, the connector does not run any `IngestActions` set in the `[Ingestion]` section for documents retrieved by that task.

3. Use the `IngestActions` parameter to specify the name of the field to add, and the field value. For example, to add a field named `AUTN_NO_EXTRACT`, with the value `SET`, type:

```
IngestActions0=META:AUTN_NO_EXTRACT=SET
```

4. Save and close the configuration file.

Customize Document Processing

You can add the following fields to a document to control how the document is processed by CFS. Unless stated otherwise, you can add the fields with any value.

AUTN_FILTER_META_ONLY

Prevents KeyView extracting file content from a file. KeyView only extracts metadata and adds this information to the document.

AUTN_NO_FILTER

Prevents KeyView extracting file content and metadata from a file. You can use this field if you do not want to extract text from certain file types.

AUTN_NO_EXTRACT

Prevents KeyView extracting subfiles. You can use this field to prevent KeyView extracting the contents of ZIP archives and other container files.

AUTN_NEEDS_MEDIA_SERVER_ANALYSIS

Identifies media files (images, video, and documents such as PDF files that contain embedded images) that you want to send to Media Server for analysis, using a `MediaServerAnalysis` import task. You do not need to add this field if you are using a Lua script to run media analysis. For more information about running analysis on media, refer to the *Connector Framework Server Administration Guide*.

AUTN_NEEDS_TRANSCRIPTION

Identifies audio and video assets that you want to send to an IDOL Speech Server for speech-to-text processing, using an `IdolSpeech` import task. You do not need to add this field if you are using a Lua

script to run speech-to-text. For more information about running speech-to-text on documents, refer to the *Connector Framework Server Administration Guide*.

AUTN_FORMAT_CORRECT_FOR_TRANSCRIPTION

To bypass the transcoding step of an IdolSpeech import task, add the field AUTN_FORMAT_CORRECT_FOR_TRANSCRIPTION. Documents that have this field are not sent to a Transcode Server. For more information about the IdolSpeech task, refer to the *Connector Framework Server Administration Guide*.

AUTN_AUDIO_LANGUAGE

To bypass the language identification step of an IdolSpeech import task add the field AUTN_AUDIO_LANGUAGE. The value of the field must be the name of the IDOL Speech Server language pack to use for extracting speech. Documents that have this field are not sent to the IDOL Speech Server for language identification. For more information about the IdolSpeech task, refer to the *Connector Framework Server Administration Guide*.

Standardize Field Names

Field standardization modifies documents so that they have a consistent structure and consistent field names. You can use field standardization so that documents indexed into IDOL through different connectors use the same fields to store the same type of information.

For example, documents created by the File System Connector can have a field named FILEOWNER. Documents created by the Documentum Connector can have a field named owner_name. Both of these fields store the name of the person who owns a file. Field standardization renames the fields so that they have the same name.

Field standardization only modifies fields that are specified in a dictionary, which is defined in XML format. A standard dictionary, named `dictionary.xml`, is supplied in the installation folder of every connector. If a connector does not have any entries in the dictionary, field standardization has no effect.

Configure Field Standardization

IDOL Connectors have several configuration parameters that control field standardization. All of these are set in the [Connector] section of the configuration file:

- `EnableFieldNameStandardization` specifies whether to run field standardization.
- `FieldNameDictionaryPath` specifies the path of the dictionary file to use.
- `FieldNameDictionaryNode` specifies the rules to use. The default value for this parameter matches the name of the connector, and Micro Focus recommends that you do not change it. This prevents one connector running field standardization rules that are intended for another.

To configure field standardization, use the following procedure.

NOTE: You can also configure CFS to run field standardization. To standardize all field names, you must run field standardization from both the connector and CFS.

To enable field standardization

1. Stop the connector.
2. Open the connector's configuration file.
3. In the [Connector] section, set the following parameters:

<code>EnableFieldNameStandardization</code>	A Boolean value that specifies whether to enable field standardization. Set this parameter to true .
<code>FieldNameDictionaryPath</code>	The path to the dictionary file that contains the rules to use to standardize documents. A standard dictionary is included with the connector and is named <code>dictionary.xml</code> .

For example:

```
[Connector]
EnableFieldNameStandardization=true
FieldNameDictionaryPath=dictionary.xml
```

4. Save the configuration file and restart the connector.

Customize Field Standardization

Field standardization modifies documents so that they have a consistent structure and consistent field names. You can use field standardization so that documents indexed into IDOL through different connectors use the same fields to store the same type of information. Field standardization only modifies fields that are specified in a dictionary, which is defined in XML format. A standard dictionary, named `dictionary.xml`, is supplied in the installation folder of every connector.

In most cases you should not need to modify the standard dictionary, but you can modify it to suit your requirements or create dictionaries for different purposes. By modifying the dictionary, you can configure the connector to apply rules that modify documents before they are ingested. For example, you can move fields, delete fields, or change the format of field values.

The following examples demonstrate how to perform some operations with field standardization.

The following rule renames the field `Author` to `DOCUMENT_METADATA_AUTHOR_STRING`. This rule applies to all components that run field standardization and applies to all documents.

```
<FieldStandardization>
  <Field name="Author">
    <Move name="DOCUMENT_METADATA_AUTHOR_STRING"/>
  </Field>
</FieldStandardization>
```

The following rule demonstrates how to use the `Delete` operation. This rule instructs CFS to remove the field `KeyviewVersion` from all documents (the `Product` element with the attribute `key="ConnectorFramework"` ensures that this rule is run only by CFS).

```
<FieldStandardization>
  <Product key="ConnectorFrameWork">
    <Field name="KeyviewVersion">
      <Delete/>
    </Field>
  </Product>
</FieldStandardization>
```

There are several ways to select fields to process using the `Field` element.

Field element attribute	Description	Example
name	Select a field where the field name matches a fixed value.	<p>Select the field <code>MyField</code>:</p> <pre><Field name="MyField"> ... </Field></pre> <p>Select the field <code>Subfield</code>, which is a subfield of <code>MyField</code>:</p> <pre><Field name="MyField"> <Field name="Subfield"> ... </Field> </Field></pre>
path	Select a field where its path matches a fixed value.	<p>Select the field <code>Subfield</code>, which is a subfield of <code>MyField</code>.</p> <pre><Field path="MyField/Subfield"> ... </Field></pre>
nameRegex	Select all fields at the current depth where the field name matches a regular expression.	<p>In this case the field name must begin with the word <code>File</code>:</p> <pre><Field nameRegex="File.*"> ... </Field></pre>
pathRegex	<p>Select all fields where the path of the field matches a regular expression.</p> <p>This operation can be inefficient because every metadata field must be checked. If possible, select the fields to process another way.</p>	<p>This example selects all subfields of <code>MyField</code>.</p> <pre><Field pathRegex="MyField/[^/]*"> ... </Field></pre> <p>This approach would be more efficient:</p> <pre><Field name="MyField"> <Field nameRegex=".*"></pre>

		<pre> ... </Field> </Field> </pre>
--	--	--

You can also limit the fields that are processed based on their value, by using one of the following:

Field element attribute	Description	Example
matches	Process a field if its value matches a fixed value.	Process a field named MyField, if its value matches abc. <pre> <Field name="MyField" matches="abc"> ... </Field> </pre>
matchesRegex	Process a field if its entire value matches a regular expression.	Process a field named MyField, if its value matches one or more digits. <pre> <Field name="MyField" matchesRegex="\d+"> ... </Field> </pre>
containsRegex	Process a field if its value contains a match to a regular expression.	Process a field named MyField if its value contains three consecutive digits. <pre> <Field name="MyField" containsRegex="\d{3}"> ... </Field> </pre>

The following rule deletes every field or subfield where the name of the field or subfield begins with temp.

```

<FieldStandardization>
  <Field pathRegex="(./)?temp[/]*">
    <Delete/>
  </Field>
</FieldStandardization>

```

The following rule instructs CFS to rename the field Author to DOCUMENT_METADATA_AUTHOR_STRING, but only when the document contains a field named DocumentType with the value 230 (the KeyView format code for a PDF file).

```

<FieldStandardization>
  <Product key="ConnectorFramework">
    <IfField name="DocumentType" matches="230"> <!-- PDF -->
      <Field name="Author">
        <Move name="DOCUMENT_METADATA_AUTHOR_STRING"/>
      </Field>
    </IfField>
  </Product>
</FieldStandardization>

```

TIP: In this example, the `IfField` element is used to check the value of the `DocumentType` field. The `IfField` element does not change the current position in the document. If you used the `Field` element, field standardization would attempt to find an `Author` field that is a subfield of `DocumentType`, instead of finding the `Author` field at the root of the document.

The following rules demonstrate how to use the `ValueFormat` operation to change the format of dates. The first rule transforms the value of a field named `CreatedDate`. The second rule transforms the value of an attribute named `Created`, on a field named `Date`.

```
<FieldStandardization>
  <Field name="CreatedDate">
    <ValueFormat type="autndate" format="YYYY-SHORTMONTH-DD HH:NN:SS"/>
  </Field>
  <Field name="Date">
    <Attribute name="Created">
      <ValueFormat type="autndate" format="YYYY-SHORTMONTH-DD HH:NN:SS"/>
    </Attribute>
  </Field>
</FieldStandardization>
```

The `ValueFormat` element has the following attributes:

type	To convert the date into the IDOL AUTNDATE format, specify <code>autndate</code> . To convert the date into a custom format, specify <code>customdate</code> and then set the attribute <code>targetformat</code> .
format	The format to convert the date from. Specify the format using standard IDOL date formats.
targetformat	The format to convert the date into, when you set the type attribute to <code>customdate</code> . Specify the format using standard IDOL date formats.

As demonstrated by the previous example, you can select field attributes to process in a similar way to selecting fields.

You must select attributes using either a fixed name or a regular expression:

Select a field attribute by name `<Attribute name="MyAttribute">`

Select attributes that match a regular expression `<Attribute nameRegex=".*">`

You can then add a restriction to limit the attributes that are processed:

Process an attribute only if its value matches a fixed value `<Attribute name="MyAttribute" matches="abc">`

Process an attribute only if its value matches a regular expression `<Attribute name="MyAttribute" matchesRegex=".*">`

Process an attribute only if its value contains a match to a regular expression `<Attribute name="MyAttribute" containsRegex="\w+">`

The following rule moves all of the attributes of a field to sub fields, if the parent field has no value. The `id` attribute on the first `Field` element provides a name to a matching field so that it can be referred to by later operations. The `GetName` and `GetValue` operations save the name and value of a selected field or attribute (in this case an attribute) into variables (in this case `$'name'` and `$'value'`) which can be used by later operations. The `AddField` operation uses the variables to add a new field at the selected location (the field identified by `id="parent"`).

```
<FieldStandardization>
  <Field pathRegex=".*" matches="" id="parent">
    <Attribute nameRegex=".*">
      <GetName var="name"/>
      <GetValue var="value"/>
      <Field fieldId="parent">
        <AddField name="$'name'" value="$'value'"/>
      </Field>
    <Delete/>
  </Attribute>
</Field>
</FieldStandardization>
```

The following rule demonstrates how to move all of the subfields of `UnwantedParentField` to the root of the document, and then delete the field `UnwantedParentField`.

```
<FieldStandardization id="root">
  <Product key="MyConnector">
    <Field name="UnwantedParentField">
      <Field nameRegex=".*">
        <Move destId="root"/>
      </Field>
    <Delete/>
  </Field>
</Product>
</FieldStandardization>
```

Run Lua Scripts

IDOL Connectors can run custom scripts written in Lua, an embedded scripting language. You can use Lua scripts to process documents that are created by a connector, before they are sent to CFS and indexed into IDOL Server. For example, you can:

- Add or modify document fields.
- Manipulate the information that is indexed into IDOL.
- Call out to an external service, for example to alert a user.

There might be occasions when you do not want to send documents to a CFS. For example, you might use the `Collect` action to retrieve documents from one repository and then insert them into another. You can use a Lua script to transform the documents from the source repository so that they can be accepted by the destination repository.

To run a Lua script from a connector, use one of the following methods:

- Set the `IngestActions` configuration parameter in the connector's configuration file. For information about how to do this, see [Run a Lua Script using an Ingest Action, on the next page](#). The connector runs ingest actions on documents before they are sent for ingestion.
- Set the `IngestActions` action parameter when using the `Synchronize` action.
- Set the `CollectActions` action parameter when using the `Collect` action.

Write a Lua Script

A Lua script that is run from a connector must have the following structure:

```
function handler(config, document, params)
    ...
end
```

The handler function is called for each document and is passed the following arguments:

Argument	Description
config	A <code>LuaConfig</code> object that you can use to retrieve the values of configuration parameters from the connector's configuration file.
document	A <code>LuaDocument</code> object. The document object is an internal representation of the document being processed. Modifying this object changes the document.
params	The <code>params</code> argument is a table that contains additional information provided by the connector: <ul style="list-style-type: none">• TYPE. The type of task being performed. The possible values are <code>ADD</code>, <code>UPDATE</code>, <code>DELETE</code>, or <code>COLLECT</code>.• SECTION. The name of the section in the configuration file that contains configuration parameters for the task.• FILENAME. The document filename. The Lua script can modify this file, but must not delete it.• OWNFILE. Indicates whether the connector (and CFS) has ownership of the file. A value of <code>true</code> means that CFS deletes the file after it has been processed.

The following script demonstrates how you can use the `config` and `params` arguments:

```
function handler(config, document, params)
    -- Write all of the additional information to a log file
    for k,v in pairs(params) do
        log("logfile.txt", k..": " ..tostring(v))
    end

    -- The following lines set variables from the params argument
    type = params["TYPE"]
    section = params["SECTION"]
```

```
filename = params["FILENAME"]

-- Read a configuration parameter from the configuration file
-- If the parameter is not set, "DefaultValue" is returned
val = config:getValue(section, "Parameter", "DefaultValue")

-- If the document is not being deleted, set the field FieldName
-- to the value of the configuration parameter
if type ~= "DELETE" then
    document:setFieldValue("FieldName", val)
end

-- If the document has a file (that is, not just metadata),
-- copy the file to a new location and write a stub idx file
-- containing the metadata.
if filename ~= "" then
    copytofilename = "../out/".create_uuid(filename)
    copy_file(filename, copytofilename)
    document:writeStubIdx(copytofilename.."idx")
end

return true
end
```

For the connector to continue processing the document, the handler function must return **true**. If the function returns **false**, the document is discarded.

TIP: You can write a library of useful functions to share between multiple scripts. To include a library of functions in a script, add the code `dofile("library.lua")` to the top of the lua script, outside of the handler function.

Run a Lua Script using an Ingest Action

To run a Lua script on documents that are sent for ingestion, use an Ingest Action.

To run a Lua script using an Ingest Action

1. Open the connector's configuration file.
2. Find one of the following sections in the configuration file:
 - To run a Lua script on all documents retrieved by a specific task, find the [TaskName] section.
 - To run a Lua script on all documents that are sent for ingestion, find the [Ingestion] section.

NOTE: If you set the IngestActions parameter in a [TaskName] section, the connector does not run any IngestActions set in the [Ingestion] section for that task.

3. Use the `IngestActions` parameter to specify the path to your Lua script. For example:

`IngestActions=LUA:C:\Autonomy\myScript.lua`

4. Save and close the configuration file.

Related Topics

- [Write a Lua Script, on page 60](#)

Example Lua Scripts

This section contains example Lua scripts.

- [Add a Field to a Document, below](#)
- [Merge Document Fields, on the next page](#)

Add a Field to a Document

The following script demonstrates how to add a field named “MyField” to a document, with a value of “MyValue”.

```
function handler(config, document, params)
    document:addField("MyField", "MyValue");
    return true;
end
```

The following script demonstrates how to add the field `AUTN_NEEDS_MEDIA_SERVER_ANALYSIS` to all JPEG, TIFF and BMP documents. This field indicates to CFS that the file should be sent to a Media Server for analysis (you must also define the `MediaServerAnalysis` task in the CFS configuration file).

The script finds the file type using the `DRREFERENCE` document field, so this field must contain the file extension for the script to work correctly.

```
function handler(config, document, params)
    local extensions_for_ocr = { jpg = 1 , tif = 1, bmp = 1 };
    local filename = document:getFieldValue("DRREFERENCE");
    local extension, extension_found = filename:gsub("^.*%.(%w+)$", "%1", 1);

    if extension_found > 0 then
        if extensions_for_ocr[extension:lower()] ~= nil then
            document:addField("AUTN_NEEDS_MEDIA_SERVER_ANALYSIS", "");
        end
    end

    return true;
end
```

Merge Document Fields

This script demonstrates how to merge the values of document fields.

When you extract data from a repository, the connector can produce documents that have multiple values for a single field, for example:

```
#DREFIELD ATTACHMENT="attachment.txt"  
#DREFIELD ATTACHMENT="image.jpg"  
#DREFIELD ATTACHMENT="document.pdf"
```

This script shows how to merge the values of these fields, so that the values are contained in a single field, for example:

```
#DREFIELD ATTACHMENTS="attachment.txt, image.jpg, document.pdf"
```

Example Script

```
function handler(config, document, params)  
  onefield(document,"ATTACHMENT","ATTACHMENTS")  
  return true;  
end  
  
function onefield(document,existingfield,newfield)  
  if document:hasField(existingfield) then  
    local values = { document:getFieldValues(existingfield) }  
  
    local newfieldvalue=""  
    for i,v in ipairs(values) do  
      if i>1 then  
        newfieldvalue = newfieldvalue ..", "  
      end  
  
      newfieldvalue = newfieldvalue..v  
    end  
  
    document:addField(newfield,newfieldvalue)  
  end  
  
  return true;  
end
```

Chapter 8: Ingestion

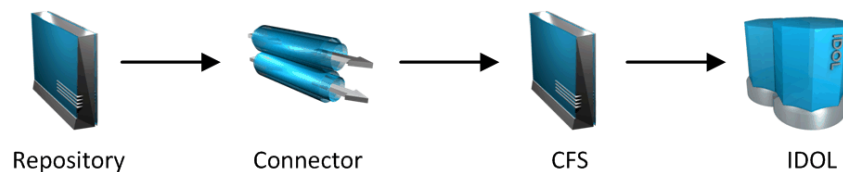
After a connector finds new documents in a repository, or documents that have been updated or deleted, it sends this information to another component called the *ingestion target*. This section describes where you can send the information retrieved by the Twitter Connector, and how to configure the ingestion target.

• Introduction	64
• Send Data to Connector Framework Server	65
• Send Data to Another Repository	66
• Index Documents Directly into IDOL Server	67
• Index Documents into Vertica	68
• Send Data to a MetaStore	71
• Run a Lua Script after Ingestion	72

Introduction

A connector can send information to a single ingestion target, which could be:

- **Connector Framework Server.** To process information and then index it into IDOL or Vertica, send the information to a Connector Framework Server (CFS). Any files retrieved by the connector are *imported* using KeyView, which means the information contained in the files is converted into a form that can be indexed. If the files are containers that contain *subfiles*, these are extracted. You can manipulate and enrich documents using Lua scripts and automated tasks such as field standardization, image analysis, and speech-to-text processing. CFS can index your documents into one or more indexes. For more information about CFS, refer to the *Connector Framework Server Administration Guide*.



- **Another Connector.** Use another connector to keep another repository up-to-date. When a connector receives documents, it inserts, updates, or deletes the information in the repository. For example, you could use an Exchange Connector to extract information from Microsoft Exchange, and send the documents to a Notes Connector so that the information is inserted, updated, or deleted in the Notes repository.

NOTE: The destination connector can only insert, update, and delete documents if it supports the insert, update, and delete fetch actions.

In most cases Micro Focus recommends ingesting documents through CFS, so that KeyView can extract content from any files retrieved by the connector and add this information to your documents. You can also use CFS to manipulate and enrich documents before they are indexed. However, if required you can configure the connector to index documents directly into:

- **IDOL Server.** You might index documents directly into IDOL Server when your connector produces metadata-only documents (documents that do not have associated files). In this case there is no need for the documents to be imported. Connectors that can produce metadata-only documents include ODBC Connector and Oracle Connector.
- **Vertica.** The metadata extracted by connectors is structured information held in structured fields, so you might use Vertica to analyze this information.
- **MetaStore.** You can index document metadata into a MetaStore for records management.

Send Data to Connector Framework Server

This section describes how to configure ingestion into Connector Framework Server (CFS).

To send data to a CFS

1. Stop the connector.
2. Open the connector's configuration file in a text editor.
3. In the [Ingestion] section, set the following parameters:

<code>EnableIngestion</code>	To enable ingestion, set this parameter to true .
<code>IngestType</code>	To send data to CFS, set this parameter to CFS .
<code>IngestHost</code>	The host name or IP address of the CFS.
<code>IngestPort</code>	The ACI port of the CFS.

For example:

```
[Ingestion]
EnableIngestion=True
IngestType=CFS
IngestHost=localhost
IngestPort=7000
```

4. (Optional) If you are sending documents to CFS for indexing into IDOL Server, set the `IndexDatabase` parameter. When documents are indexed, IDOL adds each document to the database specified in the document's DREDBNAME field. The connector sets this field for each document, using the value of `IndexDatabase`.

<code>IndexDatabase</code>	The name of the IDOL database into which documents are indexed. Ensure that this database exists in the IDOL Server configuration file.
----------------------------	---

- To index all documents retrieved by the connector into the same IDOL database, set this parameter in the [Ingestion] section.
 - To use a different database for documents retrieved by each task, set this parameter in the *TaskName* section.
5. Save and close the configuration file.

Send Data to Another Repository

You can configure a connector to send the information it retrieves to another connector. When the destination connector receives the documents, it inserts them into another repository. When documents are updated or deleted in the source repository, the source connector sends this information to the destination connector so that the documents can be updated or deleted in the other repository.

NOTE: The destination connector can only insert, update, and delete documents if it supports the insert, update, and delete fetch actions.

To send data to another connector for ingestion into another repository

1. Stop the connector.
2. Open the connector's configuration file in a text editor.
3. In the [Ingestion] section, set the following parameters:

EnableIngestion	To enable ingestion, set this parameter to true .
Ingestertype	To send data to another repository, set this parameter to Connector .
IngestHost	The host name or IP address of the machine hosting the destination connector.
IngestPort	The ACI port of the destination connector.
IngestActions	Set this parameter so that the source connector runs a Lua script to convert documents into form that can be used with the destination connector's insert action. For information about the required format, refer to the Administration Guide for the destination connector.

For example:

```
[Ingestion]
EnableIngestion=True
Ingestertype=Connector
IngestHost=AnotherConnector
IngestPort=7010
IngestActions=Lua:transformation.lua
```

4. Save and close the configuration file.

Index Documents Directly into IDOL Server

This section describes how to index documents from a connector directly into IDOL Server.

TIP: In most cases, Micro Focus recommends sending documents to a Connector Framework Server (CFS). CFS extracts metadata and content from any files that the connector has retrieved, and can manipulate and enrich documents before they are indexed. CFS also has the capability to insert documents into more than one index, for example IDOL Server and a Vertica database. For information about sending documents to CFS, see [Send Data to Connector Framework Server, on page 65](#)

To index documents directly into IDOL Server

1. Stop the connector.
2. Open the connector's configuration file in a text editor.
3. In the [Ingestion] section, set the following parameters:

<code>EnableIngestion</code>	To enable ingestion, set this parameter to true .
<code>IngesterType</code>	To send data to IDOL Server, set this parameter to Indexer .
<code>IndexDatabase</code>	The name of the IDOL database to index documents into.

For example:

```
[Ingestion]
EnableIngestion=True
IngesterType=Indexer
IndexDatabase=News
```

4. In the [Indexing] section of the configuration file, set the following parameters:

<code>IndexerType</code>	To send data to IDOL Server, set this parameter to IDOL .
<code>Host</code>	The host name or IP address of the IDOL Server.
<code>Port</code>	The IDOL Server ACI port.
<code>SSLConfig</code>	(Optional) The name of a section in the connector's configuration file that contains SSL settings for connecting to IDOL.

For example:

```
[Indexing]
IndexerType=IDOL
Host=10.1.20.3
Port=9000
```

```
SSLConfig=SSLOptions
```

```
[SSLOptions]
```

```
SSLMethod=SSLV23
```

5. Save and close the configuration file.

Index Documents into Vertica

Twitter Connector can index documents into Vertica, so that you can run queries on structured fields (document metadata).

Depending on the metadata contained in your documents, you could investigate the average age of documents in a repository. You might want to answer questions such as: How much time has passed since the documents were last updated? How many files are regularly updated? Does this represent a small proportion of the total number of documents? Who are the most active users?

TIP: In most cases, Micro Focus recommends sending documents to a Connector Framework Server (CFS). CFS extracts metadata and content from any files that the connector has retrieved, and can manipulate and enrich documents before they are indexed. CFS also has the capability to insert documents into more than one index, for example IDOL Server and a Vertica database. For information about sending documents to CFS, see [Send Data to Connector Framework Server, on page 65](#)

Prerequisites

- Twitter Connector supports indexing into Vertica 7.1 and later.
- You must install the appropriate Vertica ODBC drivers (version 7.1 or later) on the machine that hosts Twitter Connector. If you want to use an ODBC Data Source Name (DSN) in your connection string, you will also need to create the DSN. For more information about installing Vertica ODBC drivers and creating the DSN, refer to the [Vertica documentation](#).

New, Updated and Deleted Documents

When documents are indexed into Vertica, Twitter Connector adds a timestamp that contains the time when the document was indexed. The field is named `VERTICA_INDEXER_TIMESTAMP` and the timestamp is in the format `YYYY-MM-DD HH:NN:SS`.

When a document in a data repository is modified, Twitter Connector adds a new record to the database with a new timestamp. All of the fields are populated with the latest data. The record describing the older version of the document is not deleted. You can create a projection to make sure your queries only return the latest record for a document.

When Twitter Connector detects that a document has been deleted from a repository, the connector inserts a new record into the database. The record contains only the `DRREFERENCE` and the field `VERTICA_INDEXER_DELETED` set to `TRUE`.

Fields, Sub-Fields, and Field Attributes

Documents that are created by connectors can have multiple levels of fields, and field attributes. A database table has a flat structure, so this information is indexed into Vertica as follows:

- Document fields become columns in the flex table. An IDOL document field and the corresponding database column have the same name.
- Sub-fields become columns in the flex table. A document field named `my_field` with a sub-field named `subfield` results in two columns, `my_field` and `my_field.subfield`.
- Field attributes become columns in the flex table. A document field named `my_field`, with an attribute named `my_attribute` results in two columns, `my_field` holding the field value and `my_field.my_attribute` holding the attribute value.

Prepare the Vertica Database

Indexing documents into a standard database is problematic, because documents do not have a fixed schema. A document that represents an image has different metadata fields to a document that represents an e-mail message. Vertica databases solve this problem with *flex tables*. You can create a flex table without any column definitions, and you can insert a record regardless of whether a referenced column exists.

You must create a flex table before you index data into Vertica.

When creating the table, consider the following:

- Flex tables store entire records in a single column named `__raw__`. The default maximum size of the `__raw__` column is 128K. You might need to increase the maximum size if you are indexing documents with large amounts of metadata.
- Documents are identified by their `DRREFERENCE`. Micro Focus recommends that you do not restrict the size of any column that holds this value, because this could result in values being truncated. As a result, rows that represent different documents might appear to represent the same document. If you do restrict the size of the `DRREFERENCE` column, ensure that the length is sufficient to hold the longest `DRREFERENCE` that might be indexed.

To create a flex table without any column definitions, run the following query:

```
create flex table my_table();
```

To improve query performance, create real columns for the fields that you query frequently. For documents indexed by a connector, this is likely to include the `DRREFERENCE`:

```
create flex table my_table(DRREFERENCE varchar NOT NULL);
```

You can add new column definitions to a flex table at any time. Vertica automatically populates new columns with values for existing records. The values for existing records are extracted from the `__raw__` column.

For more information about creating and using flex tables, refer to the [Vertica Documentation](#) or contact Vertica technical support.

Send Data to Vertica

To send documents to a Vertica database, follow these steps.

To send data to Vertica

1. Stop the connector.
2. Open the connector's configuration file in a text editor.
3. In the [Ingestion] section, set the following parameters:

`EnableIngestion` To enable ingestion, set this parameter to **true**.

`IngestionType` To send data to a Vertica database, set this parameter to **Indexer**.

For example:

```
[Ingestion]
EnableIngestion=TRUE
IngestionType=Indexer
```

4. In the [Indexing] section, set the following parameters:

`IndexerType` To send data to a Vertica database, set this parameter to **Library**.

`LibraryDirectory` The directory that contains the library to use to index data.

`LibraryName` The name of the library to use to index data. You can omit the .dll or .so file extension. Set this parameter to **verticaIndexer**.

`ConnectionString` The connection string to use to connect to the Vertica database.

`TableName` The name of the table in the Vertica database to index the documents into. The table must be a flex table and must exist before you start indexing documents. For more information, see [Prepare the Vertica Database, on the previous page](#).

For example:

```
[Indexing]
IndexerType=Library
LibraryDirectory=indexerdlls
LibraryName=verticaIndexer
ConnectionString=DSN=VERTICA
TableName=my_flex_table
```

5. Save and close the configuration file.

Send Data to a MetaStore

You can configure a connector to send documents to a MetaStore. When you send data to a Metastore, any files associated with documents are ignored.

TIP: In most cases, Micro Focus recommends sending documents to a Connector Framework Server (CFS). CFS extracts metadata and content from any files that the connector has retrieved, and can manipulate and enrich documents before they are indexed. CFS also has the capability to insert documents into more than one index, for example IDOL Server and a MetaStore. For information about sending documents to CFS, see [Send Data to Connector Framework Server, on page 65](#)

To send data to a MetaStore

1. Stop the connector.
2. Open the connector's configuration file in a text editor.
3. In the [Ingestion] section, set the following parameters:

`EnableIngestion` To enable ingestion, set this parameter to **true**.

`IngestionType` To send data to a MetaStore, set this parameter to **Indexer**.

For example:

```
[Ingestion]
EnableIngestion=True
IngestionType=Indexer
```

4. In the [Indexing] section, set the following parameters:

`IndexerType` To send data to a MetaStore, set this parameter to **MetaStore**.

`Host` The host name of the machine hosting the MetaStore.

`Port` The port of the MetaStore.

For example:

```
[Indexing]
IndexerType=Metastore
Host=MyMetaStore
Port=8000
```

5. Save and close the configuration file.

Run a Lua Script after Ingestion

You can configure the connector to run a Lua script after batches of documents are successfully sent to the ingestion server. This can be useful if you need to log information about documents that were processed, for monitoring and reporting purposes.

To configure the file name of the Lua script to run, set the `IngestBatchActions` configuration parameter in the connector's configuration file.

- To run the script for all batches of documents that are ingested, set the parameter in the `[Ingestion]` section.
- To run the script for batches of documents retrieved by a specific task, set the parameter in the `[TaskName]` section.

NOTE: If you set the parameter in a `[TaskName]` section, the connector does not run any scripts specified in the `[Ingestion]` section for that task.

For example:

```
[Ingestion]
IngestBatchActions0=LUA:./scripts/myScript.lua
```

For more information about this parameter, refer to the *Twitter Connector Reference*.

The Lua script must have the following structure:

```
function batchhandler(documents, ingesttype)
    ...
end
```

The `batchhandler` function is called after each batch of documents is sent to the ingestion server. The function is passed the following arguments:

Argument	Description
<code>documents</code>	A table of document objects, where each object represents a document that was sent to the ingestion server. A document object is an internal representation of a document. You can modify the document object and this changes the document. However, as the script runs after the documents are sent to the ingestion server, any changes you make are not sent to CFS or IDOL.
<code>ingesttype</code>	A string that contains the ingest type for the documents. The <code>batchhandler</code> function is called multiple times if different document types are sent.

For example, the following script prints the ingest type (ADD, DELETE, or UPDATE) and the reference for all successfully processed documents to `stdout`:

```
function batchhandler(documents, ingesttype)
    for i,document in ipairs(documents) do
```



```
        local ref = document:getReference()  
        print(ingesttype..": "..ref)  
    end  
end
```

Chapter 9: Monitor the Connector

This section describes how to monitor the connector.

• IDOL Admin	74
• View Connector Statistics	76
• Use the Connector Logs	77
• Monitor Asynchronous Actions using Event Handlers	79
• Set Up Performance Monitoring	81
• Set Up Document Tracking	83

IDOL Admin

IDOL Admin is an administration interface for performing ACI server administration tasks, such as gathering status information, monitoring performance, and controlling the service. IDOL Admin provides an alternative to constructing actions and sending them from your web browser.

Prerequisites

Twitter Connector includes the `admin.dat` file that is required to run IDOL Admin.

IDOL Admin supports the following browsers:

- Internet Explorer 11
- Edge
- Chrome (latest version)
- Firefox (latest version)

Install IDOL Admin

You must install IDOL Admin on the same host that the ACI server or component is installed on. To set up a component to use IDOL Admin, you must configure the location of the `admin.dat` file and enable Cross Origin Resource Sharing.

To install IDOL Admin

1. Stop the ACI server.
2. Save the `admin.dat` file to any directory on the host.

3. Using a text editor, open the ACI server or component configuration file. For the location of the configuration file, see the ACI server documentation.
4. In the [Paths] section of the configuration file, set the AdminFile parameter to the location of the admin.dat file. If you do not set this parameter, the ACI server attempts to find the admin.dat file in its working directory when you call the IDOL Admin interface.
5. Enable Cross Origin Resource Sharing.
6. In the [Service] section, add the Access-Control-Allow-Origin parameter and set its value to the URLs that you want to use to access the interface.

Each URL must include:

- the http:// or https:// prefix

NOTE: URLs can contain the https:// prefix if the ACI server or component has SSL enabled.

- The host that IDOL Admin is installed on
- The ACI port of the component that you are using IDOL Admin for

Separate multiple URLs with spaces.

For example, you could specify different URLs for the local host and remote hosts:

```
Access-Control-Allow-Origin=http://localhost:9010  
http://Computer1.Company.com:9010
```

Alternatively, you can set Access-Control-Allow-Origin=*, which allows you to access IDOL Admin using any valid URL (for example, localhost, direct IP address, or the host name). The wildcard character (*) is supported only if no other entries are specified.

If you do not set the Access-Control-Allow-Origin parameter, IDOL Admin can communicate only with the server's ACI port, and not the index or service ports.

7. Start the ACI server.

You can now access IDOL Admin (see [Access IDOL Admin, below](#)).

Access IDOL Admin

You access IDOL Admin from a web browser. You can access the interface only through URLs that are set in the Access-Control-Allow-Origin parameter in the ACI server or component configuration file. For more information about configuring URL access, see [Install IDOL Admin, on the previous page](#).

To access IDOL Admin

- Type the following URL into the address bar of your web browser:

```
http://host:port/action=admin
```

where:

host is the host name or IP address of the machine where the IDOL component is installed.

port is the ACI port of the IDOL component you want to administer.

View Connector Statistics

Twitter Connector collects statistics about the work it has completed. The statistics that are available depend on the connector you are using, but all connectors provide information about the number and frequency of ingest-adds, ingest-updates, and ingest-deletes.

To view connector statistics

- Use the `GetStatistics` service action, for example:

```
http://host:serviceport/action=GetStatistics
```

where *host* is the host name or IP address of the machine where the connector is installed, and *serviceport* is the connector's service port.

For information about the statistics that are returned, refer to the documentation for the `GetStatistics` service action.

The connector includes an XSL template (`ConnectorStatistics.tmp1`) that you can use to visualize the statistics. You can use the template by adding the `template` parameter to the request:

```
http://host:serviceport/action=GetStatistics&template=ConnectorStatistics
```

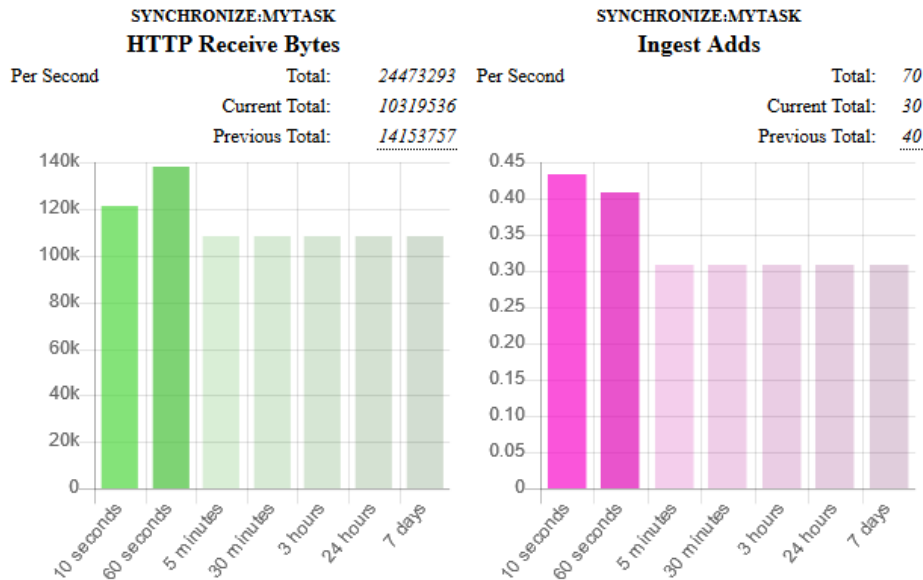
When you are using the `ConnectorStatistics` template, you can also add the `filter` parameter to the request to return specific statistics. The `filter` parameter accepts a regular expression that matches against the string `autnid:name`, where *autnid* and *name* are the values of the corresponding attributes in the XML returned by the `GetStatistics` action. For example, the following request returns statistics only for synchronize actions:

```
http://host:serviceport/action=GetStatistics&template=ConnectorStatistics
&filter=^synchronize:
```

The following request returns statistics only for the task `mytask`:

```
http://host:serviceport/action=GetStatistics&template=ConnectorStatistics
&filter=:mytask:
```

The following image shows some example statistics returned by a connector:



Above each chart is a title, for example SYNCHRONIZE:MYTASK, that specifies the action and task to which the statistics belong.

You can see from the example that in the last 60 seconds, the connector has generated an average of approximately 0.4 ingest-adds per second. In the charts, partially transparent bars indicate that the connector has not completed collecting information for those time intervals. The information used to generate statistics is stored in memory, so is lost if you stop the connector.

The following information is presented above the chart for each statistic:

- **Total** is a running total since the connector started. In the example above, there have been 70 ingest-adds in total.
- **Current Total** is the total for the actions that are currently running. In the example above, the synchronize action that is running has resulted in 30 ingest-adds being sent to CFS.
- **Previous Total** provides the totals for previous actions. In the example above, the previous synchronize cycle resulted in 40 ingest-adds. To see the totals for the 24 most recent actions, hover the mouse pointer over the value.

Use the Connector Logs

As the Twitter Connector runs, it outputs messages to its logs. Most log messages occur due to normal operation, for example when the connector starts, receives actions, or sends documents for ingestion. If the connector encounters an error, the logs are the first place to look for information to help troubleshoot the problem.

The connector separates messages into the following message types, each of which relates to specific features:

Log Message Type	Description
Action	Logs actions that are received by the connector, and related messages.
Application	Logs application-related occurrences, such as when the connector starts.
Collect	Messages related to the Collect fetch action.
Synchronize	Messages related to the Synchronize fetch action.
View	Messages related to the View action.

Customize Logging

You can customize logging by setting up your own *log streams*. Each log stream creates a separate log file in which specific log message types (for example, action, index, application, or import) are logged.

To set up log streams

1. Open the Twitter Connector configuration file in a text editor.
2. Find the [Logging] section. If the configuration file does not contain a [Logging] section, add one.
3. In the [Logging] section, create a list of the log streams that you want to set up, in the format *N=LogStreamName*. List the log streams in consecutive order, starting from 0 (zero). For example:

```
[Logging]
LogLevel=FULL
LogDirectory=logs
0=ApplicationLogStream
1=ActionLogStream
```

You can also use the [Logging] section to configure any default values for logging configuration parameters, such as LogLevel. For more information, see the *Twitter Connector Reference*.

4. Create a new section for each of the log streams. Each section must have the same name as the log stream. For example:

```
[ApplicationLogStream]
[ActionLogStream]
```

5. Specify the settings for each log stream in the appropriate section. You can specify the type of logging to perform (for example, full logging), whether to display log messages on the console, the maximum size of log files, and so on. For example:

```
[ApplicationLogStream]
LogTypeCSVs=application
LogFile=application.log
```

```
LogHistorySize=50
LogTime=True
LogEcho=False
LogMaxSizeKBs=1024

[ActionLogStream]
LogTypeCSVs=action
LogFile=logs/action.log
LogHistorySize=50
LogTime=True
LogEcho=False
LogMaxSizeKBs=1024
```

6. Save and close the configuration file. Restart the service for your changes to take effect.

Monitor Asynchronous Actions using Event Handlers

The fetch actions sent to a connector are asynchronous. Asynchronous actions do not run immediately, but are added to a queue. This means that the person or application that sends the action does not receive an immediate response. However, you can configure the connector to call an event handler when an asynchronous action starts, finishes, or encounters an error.

You can use an event handler to:

- return data about an event back to the application that sent the action.
- write event data to a text file, to log any errors that occur.

You can also use event handlers to monitor the size of asynchronous action queues. If a queue becomes full this might indicate a problem, or that applications are making requests to Twitter Connector faster than they can be processed.

Twitter Connector can call an event handler for the following events.

OnStart	The <code>OnStart</code> event handler is called when Twitter Connector starts processing an asynchronous action.
OnFinish	The <code>OnFinish</code> event handler is called when Twitter Connector successfully finishes processing an asynchronous action.
OnError	The <code>OnError</code> event handler is called when an asynchronous action fails and cannot continue.
OnQueueEvent	<p>The <code>OnQueueEvent</code> handler is called when an asynchronous action queue becomes full, becomes empty, or the queue size passes certain thresholds.</p> <ul style="list-style-type: none">• A <code>QueueFull</code> event occurs when the action queue becomes full.• A <code>QueueFilling</code> event occurs when the queue size exceeds a configurable threshold (<code>QueueFillingThreshold</code>) and the last event was a <code>QueueEmpty</code> or <code>QueueEmptying</code> event.

- A `QueueEmptying` event occurs when the queue size falls below a configurable threshold (`QueueEmptyingThreshold`) and the last event was a `QueueFull` or `QueueFilling` event.
- A `QueueEmpty` event occurs when the action queue becomes empty.

Twitter Connector supports the following types of event handler:

- The `TextFileHandler` writes event data to a text file.
- The `HttpHandler` sends event data to a URL.
- The `LuaHandler` runs a Lua script. The event data is passed into the script.

Configure an Event Handler

To configure an event handler, follow these steps.

To configure an event handler

1. Stop the connector.
2. Open the connector's configuration file in a text editor.
3. Set the `OnStart`, `OnFinish`, `OnError`, or `OnQueueEvent` parameter to specify the name of a section in the configuration file that contains the event handler settings.
 - To run an event handler for all asynchronous actions, set these parameters in the `[Actions]` section. For example:

```
[Actions]
OnStart=NormalEvents
OnFinish=NormalEvents
OnError=ErrorEvents
```

- To run an event handler for specific actions, use the action name as a section in the configuration file. The following example calls an event handler when the *Fetch* action starts and finishes successfully:

```
[Fetch]
OnStart=NormalEvents
OnFinish=NormalEvents
```

4. Create a new section in the configuration file to contain the settings for your event handler. You must name the section using the name you specified with the `OnStart`, `OnFinish`, `OnError`, or `OnQueueEvent` parameter.
5. In the new section, set the `LibraryName` parameter.

`LibraryName` The type of event handler to use to handle the event:

- To write event data to a text file, set this parameter to `TextFileHandler`,

and then set the `FilePath` parameter to specify the path of the file.

- To send event data to a URL, set this parameter to **HttpHandler**, and then use the HTTP event handler parameters to specify the URL, proxy server settings, credentials and so on.
- To run a Lua script, set this parameter to **LuaHandler**, and then set the `LuaScript` parameter to specify the script to run. For information about writing the script, see [Write a Lua Script to Handle Events, below](#).

For example:

```
[NormalEvents]
LibraryName=TextFileHandler
FilePath=./events.txt
```

```
[ErrorEvents]
LibraryName=LuaHandler
LuaScript=./error.lua
```

6. Save and close the configuration file. You must restart Twitter Connector for your changes to take effect.

Write a Lua Script to Handle Events

The Lua event handler runs a Lua script to handle events. The Lua script must contain a function named `handler` with the arguments `request` and `xml`, as shown below:

```
function handler(request, xml)
    ...
end
```

- `request` is a table holding the request parameters. For example, if the request was `action=Example&MyParam=Value`, the table will contain a key `MyParam` with the value `Value`. Some events, for example queue size events, are not related to a specific action and so the table might be empty.
- `xml` is a string of XML that contains information about the event.

Set Up Performance Monitoring

You can configure a connector to pause tasks temporarily if performance indicators on the local machine or a remote machine breach certain limits. For example, if there is a high load on the CPU or memory of the repository from which you are retrieving information, you might want the connector to pause until the machine recovers.

NOTE: Performance monitoring is available on Windows platforms only. To monitor a remote machine, both the connector machine and remote machine must be running Windows.

Configure the Connector to Pause

To configure the connector to pause

1. Open the configuration file in a text editor.
2. Find the `[FetchTasks]` section, or a `[TaskName]` section.
 - To pause all tasks, use the `[FetchTasks]` section.
 - To specify settings for a single task, find the `[TaskName]` section for the task.
3. Set the following configuration parameters:

<code>PerfMonCounterNameN</code>	The names of the performance counters that you want the connector to monitor. You can use any counter that is available in the Windows <code>perfmom</code> utility.
<code>PerfMonCounterMinN</code>	The minimum value permitted for the specified performance counter. If the counter falls below this value, the connector pauses until the counter meets the limits again. This parameter is optional but you should set a minimum value, maximum value (with <code>PerfMonCounterMaxN</code>), or both.
<code>PerfMonCounterMaxN</code>	The maximum value permitted for the specified performance counter. If the counter exceeds this value, the connector pauses until the counter meets the limits again. This parameter is optional but you should set a maximum value, minimum value (with <code>PerfMonCounterMinN</code>), or both.
<code>PerfMonAvgOverReadings</code>	(Optional) The number of readings that the connector averages before checking a performance counter against the specified limits. For example, if you set this parameter to <code>5</code> , the connector averages the last five readings and pauses only if the average breaches the limits. Increasing this value makes the connector less likely to pause if the limits are breached for a short time. Decreasing this value allows the connector to continue working faster following a pause.
<code>PerfMonQueryFrequency</code>	(Optional) The amount of time, in seconds, that the connector waits between taking readings from a performance counter.

For example:

```
[FetchTasks]
```

```
PerfMonCounterName0=\\machine-hostname\Memory\Available MBytes
```

```
PerfMonCounterMin0=1024
```

```
PerfMonCounterName1=\\machine-hostname\Processor(_Total)\% Processor Time
```

```
PerfMonCounterMax1=70
```

```
PerfMonAvgOverReadings=5
```

```
PerfMonQueryFrequency=10
```

4. Save and close the configuration file.

Determine if an Action is Paused

To determine whether an action has been paused for performance reasons, use the QueueInfo action:

```
/action=queueInfo&queueAction=getStatus&queueName=fetch
```

You can also include the optional token parameter to return information about a single action:

```
/action=queueInfo&queueAction=getStatus&queueName=fetch&token=...
```

The connector returns the status, for example:

```
<autnresponse>
  <action>QUEUEINFO</action>
  <response>SUCCESS</response>
  <responsedata>
    <actions>
      <action owner="2266112570">
        <status>Processing</status>
        <queued_time>2016-Jul-27 14:49:40</queued_time>
        <time_in_queue>1</time_in_queue>
        <process_start_time>2016-Jul-27 14:49:41</process_start_time>
        <time_processing>219</time_processing>
        <documentcounts>
          <documentcount errors="0" task="MYTASK"/>
        </documentcounts>
        <fetchaction>SYNCHRONIZE</fetchaction>
        <pausedforperformance>true</pausedforperformance>
        <token>...</token>
      </action>
    </actions>
  </responsedata>
</autnresponse>
```

When the element `pausedforperformance` has a value of `true`, the connector has paused the task for performance reasons. If the `pausedforperformance` element is not present in the response, the connector has not paused the task.

Set Up Document Tracking

Document tracking reports metadata about documents when they pass through various stages in the indexing process. For example, when a connector finds a new document and sends it for ingestion, a

document tracking event is created that shows the document has been added. Document tracking can help you detect problems with the indexing process.

You can write document tracking events to a database, log file, or IDOL Server. For information about how to set up a database to store document tracking events, refer to the *IDOL Server Administration Guide*.

To enable Document Tracking

1. Open the connector's configuration file.
2. Create a new section in the configuration file, named [DocumentTracking].
3. In the new section, specify where the document tracking events are sent.
 - To send document tracking events to a database through ODBC, set the following parameters:

Backend	To send document tracking events to a database, set this parameter to Library .
LibraryPath	Specify the location of the ODBC document tracking library. This is included with IDOL Server.
ConnectionString	The ODBC connection string for the database.

For example:

```
[DocumentTracking]
Backend=Library
LibraryPath=C:\Autonomy\IDOLServer\IDOL\modules\dt_odbc.dll
ConnectionString=DSN=MyDatabase
```

- To send document tracking events to the connector's synchronize log, set the following parameters:

Backend	To send document tracking events to the connector's logs, set this parameter to Log .
DatabaseName	The name of the log stream to send the document tracking events to. Set this parameter to synchronize .

For example:

```
[DocumentTracking]
Backend=Log
DatabaseName=synchronize
```

- To send document tracking events to an IDOL Server, set the following parameters:

Backend	To send document tracking events to an IDOL Server, set this parameter to
---------	---

IDOL.

TargetHost The host name or IP address of the IDOL Server.

TargetPort The index port of the IDOL Server.

For example:

```
[DocumentTracking]
Backend=IDOL
TargetHost=idol
TargetPort=9001
```

For more information about the parameters you can use to configure document tracking, refer to the *Twitter Connector Reference*.

4. Save and close the configuration file.

Glossary

A

ACI (Autonomy Content Infrastructure)

A technology layer that automates operations on unstructured information for cross-enterprise applications. ACI enables an automated and compatible business-to-business, peer-to-peer infrastructure. The ACI allows enterprise applications to understand and process content that exists in unstructured formats, such as email, Web pages, Microsoft Office documents, and IBM Notes.

ACI Server

A server component that runs on the Autonomy Content Infrastructure (ACI).

ACL (access control list)

An ACL is metadata associated with a document that defines which users and groups are permitted to access the document.

action

A request sent to an ACI server.

active directory

A domain controller for the Microsoft Windows operating system, which uses LDAP to authenticate users and computers on a network.

C

Category component

The IDOL Server component that manages categorization and clustering.

Community component

The IDOL Server component that manages users and communities.

connector

An IDOL component (for example File System Connector) that retrieves information from a local or remote repository (for example, a file system, database, or Web site).

Connector Framework Server (CFS)

Connector Framework Server processes the information that is retrieved by connectors. Connector Framework Server uses KeyView to extract document content and metadata from over 1,000 different file types. When the information has been processed, it is sent to an IDOL Server or Distributed Index Handler (DIH).

Content component

The IDOL Server component that manages the data index and performs most of the search and retrieval operations from the index.

D

DAH (Distributed Action Handler)

DAH distributes actions to multiple copies of IDOL Server or a component. It allows you to use failover, load balancing, or distributed content.

DIH (Distributed Index Handler)

DIH allows you to efficiently split and index extremely large quantities of data into multiple copies of IDOL Server or the Content component. DIH allows you to create a scalable solution that delivers high performance and high availability. It provides a flexible way to batch, route, and categorize the indexing of internal and external content into IDOL Server.

I

IDOL

The Intelligent Data Operating Layer (IDOL) Server, which integrates unstructured, semi-structured and structured information from multiple repositories through an understanding of the content. It delivers a real-time environment in which operations across applications and content are automated.

IDOL Proxy component

An IDOL Server component that accepts incoming actions and distributes them to the appropriate subcomponent. IDOL Proxy also performs some maintenance operations to make sure that the subcomponents are running, and to start and stop them when necessary.

Import

Importing is the process where CFS, using KeyView, extracts metadata, content, and sub-files from items retrieved by a connector. CFS adds the information to documents so that it is indexed into IDOL Server. Importing allows IDOL server to use the information in a repository, without needing to process the information in its native format.

Ingest

Ingestion converts information that exists in a repository into documents that can be indexed into IDOL Server. Ingestion starts when a connector finds new documents in a repository, or documents that have been updated or deleted, and sends this information to CFS. Ingestion includes the import process, and processing tasks that can modify and enrich the information in a document.

Intellectual Asset Protection System (IAS)

An integrated security solution to protect your data. At the front end, authentication checks that users are allowed to access the system that contains the result data. At the back end, entitlement checking and authentication combine to ensure that query results contain only documents that the user is allowed to see, from repositories that the user has permission to access. For more information, refer to the IDOL Document Security Administration Guide.

K

KeyView

The IDOL component that extracts data, including text, metadata, and subfiles from over 1,000 different file types. KeyView can also convert documents to HTML format for viewing in a Web browser.

L

LDAP

Lightweight Directory Access Protocol. Applications can use LDAP to retrieve information from a server. LDAP is used for directory services (such as corporate email and telephone directories) and user authentication. See also: active directory, primary domain controller.

License Server

License Server enables you to license and run multiple IDOL solutions. You must have a License Server on a machine with a known, static IP address.

O

OmniGroupServer (OGS)

A server that manages access permissions for your users. It communicates with your

repositories and IDOL Server to apply access permissions to documents.

P

primary domain controller

A server computer in a Microsoft Windows domain that controls various computer resources. See also: active directory, LDAP.

V

View

An IDOL component that converts files in a repository to HTML formats for viewing in a Web browser.

W

Wildcard

A character that stands in for any character or group of characters in a query.

X

XML

Extensible Markup Language. XML is a language that defines the different attributes of document content in a format that can be read by humans and machines. In IDOL Server, you can index documents in XML format. IDOL Server also returns action responses in XML format.

Send documentation feedback

If you have comments about this document, you can [contact the documentation team](#) by email. If an email client is configured on this system, click the link above and an email window opens with the following information in the subject line:

Feedback on Administration Guide (Micro Focus Twitter Connector 12.4)

Add your feedback to the email and click **Send**.

If no email client is available, copy the information above to a new message in a web mail client, and send your feedback to swpdl.idoldocsfeedback@microfocus.com.

We appreciate your feedback!