

Micro Focus<sup>®</sup>

# Modernization Workbench<sup>™</sup>

---

Installing MW EE for the Desktop



Copyright © 2009 Micro Focus (IP) Ltd. All rights reserved.

Micro Focus (IP) Ltd. has made every effort to ensure that this book is correct and accurate, but reserves the right to make changes without notice at its sole discretion at any time. The software described in this document is supplied under a license and may be used or copied only in accordance with the terms of such license, and in particular any warranty of fitness of Micro Focus software products for any particular purpose is expressly excluded and in no event will Micro Focus be liable for any consequential loss.

Micro Focus, the Micro Focus Logo, Micro Focus Server, Micro Focus Studio, Net Express, Net Express Academic Edition, Net Express Personal Edition, Server Express, Mainframe Express, Animator, Application Server, AppMaster Builder, APS, Data Express, Enterprise Server, Enterprise View, EnterpriseLink, Object COBOL Developer Suite, Revolve, Revolve Enterprise Edition, SOA Express, Unlocking the Value of Legacy, and XDB are trademarks or registered trademarks of Micro Focus (IP) Limited in the United Kingdom, the United States and other countries.

IBM®, CICS® and RACF® are registered trademarks, and IMS™ is a trademark, of International Business Machines Corporation.

Copyrights for third party software used in the product:

- The YGrep Search Engine is Copyright (c) 1992-2004 Yves Roumazielles
- Apache web site (<http://www.microfocus.com/docs/links.asp?mfe=apache>)
- Eclipse (<http://www.microfocus.com/docs/links.asp?nx=eclp>)
- Cyrus SASL license
- Open LDAP license

All other trademarks are the property of their respective owners.

No part of this publication, with the exception of the software product user documentation contained on a CD-ROM, may be copied, photocopied, reproduced, transmitted, transcribed, or reduced to any electronic medium or machine-readable form without prior written consent of Micro Focus (IP) Ltd. Contact your Micro Focus representative if you require access to the modified Apache Software Foundation source files.

Licensees may duplicate the software product user documentation contained on a CD-ROM, but only to the extent necessary to support the users authorized access to the software under the license agreement. Any reproduction of the documentation, regardless of whether the documentation is reproduced in whole or in part, must be accompanied by this copyright statement in its entirety, without modification.

U.S. GOVERNMENT RESTRICTED RIGHTS. It is acknowledged that the Software and the Documentation were developed at private expense, that no part is in the public domain, and that the Software and Documentation are Commercial Computer Software provided with RESTRICTED RIGHTS under Federal Acquisition Regulations and agency supplements to them. Use, duplication or disclosure by the U.S. Government is subject to restrictions as set forth in subparagraph (c)(1)(ii) of The Rights in Technical Data and Computer Software clause at DFAR 252.227-7013 et. seq. or subparagraphs (c)(1) and (2) of the Commercial Computer Software Restricted Rights at FAR 52.227-19, as applicable. Contractor is Micro Focus (IP) Ltd, 9420 Key West Avenue, Rockville, Maryland 20850. Rights are reserved under copyright laws of the United States with respect to unpublished portions of the Software.

---

# Contents

<b>Chapter: 1</b>	<b>Overview</b> . . . . .	<b>1</b>
	Installation Tasks . . . . .	1
<b>Chapter: 2</b>	<b>Hardware and Software Requirements</b> . . . . .	<b>3</b>
	MW EE Desktop Hardware Requirements . . . . .	3
	MW EE Desktop Software Requirements . . . . .	4
<b>Chapter: 3</b>	<b>Installing and Uninstalling MW EE</b> . . . . .	<b>5</b>
	Installing the MW EE Repository . . . . .	5
	Installing the MW EE Desktop . . . . .	6
	Installing the Java Add-On . . . . .	6
	Uninstalling MW EE . . . . .	7
<b>Chapter: 4</b>	<b>Post-Installation Administrative Tasks</b> . . . . .	<b>9</b>
	Specifying the License Location . . . . .	9
	Configuring the Workbench . . . . .	10
	Database Setup . . . . .	12
	Upgrading Workspaces . . . . .	13
<b>Chapter: 5</b>	<b>Troubleshooting the Installation</b> . . . . .	<b>15</b>
	Uninstalling Oracle . . . . .	15
	Troubleshooting Oracle Errors . . . . .	16

---

---

# 1

# Overview

This manual describes how to install and configure Modernization Workbench Enterprise Edition for the Desktop (MW EE), a suite of software products for analyzing, mining, and re-architecting legacy applications. MW EE is deployed in a single-user environment with access to a database of application *repositories* that describe the objects in your applications and how they interact. Language-specific parsers generate repository models that serve as the basis for a rich set of diagrams, reports, and other documentation.

MW EE installations consist of the following components:

- The MW EE Repository is a database containing MW repositories, one per MW workspace.
- The MW EE Desktop hosts MW workspace files and related support files.

Both components are installed on the local machine.

**NOTE:** For instructions on how to install the Enterprise View Express add-on, see **Managing Application Portfolios** in the *workbench documentation set*.

## Installation Tasks

The table below describes the tasks involved in installing MW EE and the order in which the tasks must be performed.

Task	Order	Notes
Install Repository	1	Install on local machine.
Install Desktop	2	Install on local machine.
Install Java add-on	3	Optional.



---

# 2

# Hardware and Software Requirements

The following sections describe the hardware, disk space, operating system, and software requirements for MW EE installations.

## MW EE Desktop Hardware Requirements

The table below lists the hardware requirements for MW EE Desktop installations. Hardware requirements may vary depending on the size of the application you are analyzing.

Type	Recommendation	Notes
Processor	2.6 GHz Dual Core or 2x 3.0+ GHz Processors	Dual processing capability recommended using multiple cores in a processor or using separate physical processors.  <i>NOTE: The MW Desktop may not be installed on a machine where more than 2 physical processors (occupying 1 socket each) are utilized.</i>
Physical Memory	3GB RAM	
Virtual Memory	1GB to 3GB	

Type	Recommendation	Notes
Hard Drive Storage	Variable	Approximately 60X the size in bytes of the application source code modeled in MW. Minimum of 20GB disk space needed for the software installation of Oracle and the MW template database. Minimum of 200MB disk space for the MW software. Minimum of 115MB for the Java add-on.
Hard Drive Requirements	2 or more physical hard drive partitions, fast drives recommended	Enables segmenting data I/O operations for performance tuning optimizations.

## MW EE Desktop Software Requirements

The table below lists the software requirements for MW EE Desktop installations.

Software	Notes
Operating System	Microsoft Windows XP Professional Service Pack 2 (or higher) Microsoft Windows Server 2003
Internet Explorer 6.0 or higher (optional)	
Microsoft Office (optional)	Required by MW tools with reporting capabilities to save to Microsoft Office file formats.
Microsoft Visio (optional)	Required to generate output as Microsoft Visio .VSD files.  <i>NOTE: Visio .VDX files are XML-based and may be generated without Visio being installed on the MW EE client.</i>
JRE 1.5.0 or higher (optional)	Required for Java add-on. Can be installed after the add-on is installed.



---

# 3

## Installing and Uninstalling MW EE

Before running an installation program described in this section, make sure you have administrative permissions for the machine on which you are performing the installation. If you do not have administrative permissions, the installation program will not let you continue.

*NOTE: Both the MW EE Repository and MW EE Desktop are installed on the local machine. Make sure that Oracle is not already installed on the machine. Failure to completely uninstall a previous version of Oracle will cause errors in MW operations.*

### Installing the MW EE Repository

The MW EE Repository is an Oracle database containing up to seven multiuser repositories, one repository per MW workspace. An embedded version of Oracle is installed with the repository.

---

#### TASK

1. In the repository installation folder, double-click the `setup_32.cmd` file. A command window opens.
2. Enter the drive for binary files in the **Select drive for binaries** field, or accept the default. Press Enter.
3. Enter the drive for data files in the **Select drive for data** field, or accept the default. Press Enter.
4. Enter the System Global Area (SGA) size in megabytes in the **SGA size field**, or accept the default. The SGA size must be at least 128 megabytes. Press Enter. The repository server installation begins transferring files to your machine.

*NOTE: If you receive a Windows Security Alert during the installation asking if you want to keep blocking the program, click **Unblock**.*

---

# Installing the MW EE Desktop

The MW EE Desktop hosts MW workspace files and related support files. Follow the instructions in this section to install the MW Desktop.

---

## TASK

1. In the installation folder for the product, double-click the setup.exe program. The Welcome screen opens.
  2. Click **Next**. The License Agreement screen opens. Read the License Agreement carefully. Click **I accept the terms in the license agreement** to accept its terms, then click **Next**.
  3. The Customer Information screen opens. Enter your user name and organization in the **User Name** and **Organization** fields, respectively. Click **Next**.
  4. The Destination Folder screen opens. Choose an installation folder. To accept the prefilled value, click **Next**. To specify a different folder, click **Change** and follow the substeps below.
    - a. Navigate the folder structure to find a suitable location. If the destination folder does not exist, the installation creates it.
    - b. Click **OK** to exit the Change Current Destination Folder screen and return to the Destination Folder screen.
    - c. Click **Next** in the Destination Folder screen.
  5. The Ready to Install the Program screen opens. Click **Install** to begin transferring files to your machine. A progress meter indicates the progress of the transfer.

*NOTE: To make changes to the settings, click **Back** repeatedly until you find the information you are looking for, make the required changes, then click **Next** until you return to the Ready to Install the Program screen.*
  6. When the transfer is complete, the Setup Complete screen opens. Click **Finish**.
- 

# Installing the Java Add-On

To install the Java add-on, double-click Java.Addon.exe in the installation folder for the product.

# Uninstalling MW EE

Follow the instructions below to uninstall an MW EE product. Make sure to close any open MW EE programs before running the uninstall program.

---

## TASK

1. Choose **Start:Settings:Control Panel**.
  2. In the Control Panel window, double-click the **Add/Remove Programs** icon.
  3. In the Add/Remove Programs window, select the product you want to uninstall, then click **Remove**. You are prompted to confirm that you want to uninstall the product. Click **Yes**.
  4. When the uninstall process completes, it prompts you to restart your computer. Click **Yes** to restart immediately, click **No** if you plan to restart later.
-



---

# 4

# Post-Installation Administrative Tasks

Before you can work in MW, you must complete the basic administrative tasks described in this section. You are prompted to perform the first of these tasks, specifying the license location, when you complete the installation.

## Specifying the License Location

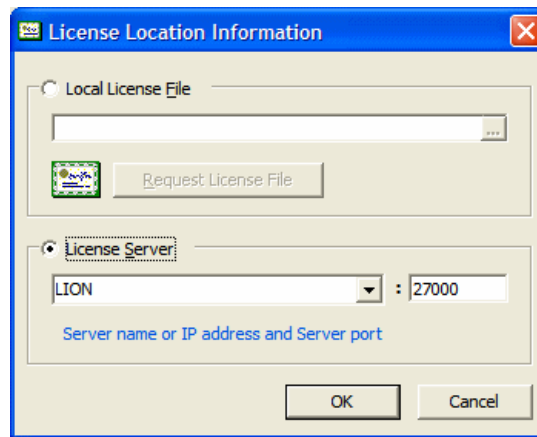
MW EE Desktop installations require a local license file. Follow the instructions in this section to specify the location of the license file.


---

### TASK

1. Open the License Location Information dialog:
  - If you are installing MW EE, click **Finish** in the Setup Complete screen. The License Location Information dialog opens.
  - If you have previously specified the license location and want to modify it, choose **Start:Programs:Micro Focus:Modernization Workbench Administration**. The Modernization Workbench Administration window opens. In the **Administer** menu, choose

**Connect to License Location.** The License Location Information dialog opens.



2. Choose the license location. Click **Local License File**, then specify the location of the file in the text field. Use the  button to browse for the file. When you are satisfied with your entries, click **OK**.

*NOTE: If you do not have a local license file, click **Request License File**. The license key center opens in a Web browser. Follow the instructions in the license key center to request a license file.*

---

## Configuring the Workbench

Use the Configuration Manager in the workbench Administration tool to configure workbench options and displays for the programming languages, dialects, character sets, and products in use at your site.

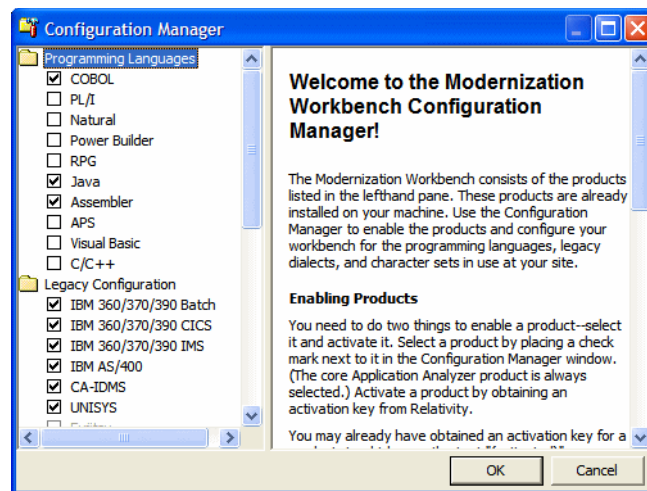
If you configure your workbench for Cobol, for example, you will see only the workbench options and displays appropriate for Cobol modernization. If it turns out that you need to configure your workbench for PL/I as well, you can

always come back to the Configuration Manager and select PL/I in addition to Cobol.

TASK

1. Open the Configuration Manager window.
  - If you are installing MW EE, the Configuration Manager window opens after you finish specifying the license location.
  - If you have previously installed MW EE and want to reconfigure it, choose **Start:Programs:Micro Focus:Modernization Workbench Administration**. The Modernization Workbench Administration window opens. In the **Administer** menu, choose **Configure Workbench**. The Configuration Manager window opens.

*NOTE: If the workbench is open, you are prompted to exit. Click **OK**, then close the workbench.*



2. Select each programming language, dialect, and character set currently in use at your site. Select each workbench product you want to use at your site. The core Application Analyzer product is always selected. Select **Additional Tools** to enable tools not used in typical workbench configurations. When you are satisfied with your choices, click **OK**.

*NOTE: If you modify your workbench configuration, make sure to upgrade workspaces created under the previous configuration.*

# Database Setup

The MW EE Repository is a database containing up to seven repositories, one repository per MW workspace. When you create an MW workspace, you must provide three key pieces of information:

- An ODBC data source name (DSN). The data source name for all workspaces in the MW EE Repository is RMW\_Repository.
- A unique database schema name. Choose from seven predefined schema names:
  - RMWUSER1 through RMWUSER5, which together share a 30GB tablespace. Use these schemas for smaller workspaces that together contain no more than 75,000 source files.
  - RMWUSERM, which is assigned a 24GB tablespace. Use this schema for a workspace that contains between 25,000 and 50,000 source files.
  - RMWUSERL, which is assigned a 30GB tablespace. Use this schema for a workspace that contains between 50,000 and 75,000 source files.

*NOTE: Tablespace usage may vary based on file complexity, type, programming language, and other characteristics. Tablespace limits are extensible, so check with Micro Focus support services before concluding that an application is too large for an available schema.*

- A unique database user name, which must be the same as the database schema name. The password for the user name is identical to the user name. So the user name and password for the schema RMWUSER1 should both be RMWUSER1.

Each user who connects to the workspace must provide all three pieces of information. For complete instructions on creating and connecting to workspaces, see *Getting Started* in the workbench documentation set.



# Upgrading Workspaces

When you modify your workbench configuration, you must *upgrade* every workspace created with the previous configuration.

---

## TASK

1. Choose **Start:Programs:Micro Focus:Modernization Workbench Administration**. The Modernization Workbench Administration window opens.
  2. In the Administration window, choose **Upgrade Workspace** in the **Administer** menu. The Upgrade workspace dialog opens, where you can choose the workspace to upgrade.
-



---

# 5

# Troubleshooting the Installation

Follow the instructions in this section to troubleshoot an MW EE installation.

## Uninstalling Oracle

Failure to completely uninstall a previous version of Oracle on your machine will cause errors in MW EE repository operations. Follow the instructions in this section to uninstall a previous version of Oracle.

*NOTE: Uninstalling Oracle should only be undertaken by on-site support services personnel and only with the explicit permission of the client.*

---

### TASK

1. Make a backup of the `tnsnames.ora` and `sqlnet.ora` files in the `ORACLE_HOME\NETWORK\ADMIN` folder.
2. Choose **Start:Programs:Oracle Installation Products: Universal Installer**. In the Universal Installer dialog, click **Deinstall Products**, then follow the prompts.

*ADDITIONAL INFORMATION:* After completing this step, check the Control Panel Add/Remove Programs window to make sure Oracle has been removed from the list of programs. If it still appears in the list, remove it.

3. Choose **Start:Run**. Type `regedit` in the **Open** combo box and click **OK**. Delete the folders `HKEY_CURRENT_USER\SOFTWARE\ORACLE` and `HKEY_LOCAL_MACHINE\SOFTWARE\ORACLE` from the registry.

*ADDITIONAL INFORMATION:* Under `HKEY_LOCAL_MACHINE\SOFTWARE\ODBC\ODBCINST.INI`, there may be keys `OraDbversion_home1`, `Oracle` in `OraDbversion_home2`, or other Oracle keys. Delete the registry entries with those keys.

Under `HKEY_LOCAL_MACHINE\SOFTWARE\ODBC\ODBCINST.INI\ODBC Drivers`, look for keys `Oracle` in `OraDbversion_home1` or `Oracle` in `OraDbversion_home2`. Delete the registry entries with those keys. Do not delete the entry with the key `Microsoft ODBC for Oracle`.

4. Choose **Start:Settings:Control Panel:System**. In the System Properties window, click the Advanced tab, then click **Environment Variables**. In the System variables group box, delete the environment variables ORACLE\_HOME and TNS\_ADMIN. Edit the PATH environment variable to remove any folder path that contains the string Oracle. Edit the PATH, CLASSPATH, and PERL5LIB environment variables to remove any folder path that contains the string Oracle.

*ADDITIONAL INFORMATION:* After completing this step, start the Services tool in the Control Panel Administrative Tools window to check whether Windows services with names starting with Oracle are running. Some examples of such service names are OracleJobSchedulerORCL and OracleOraDbversionhome1TNSListener. Stop those services.

5. Delete the C:\Oracle and C:\Program Files\Oracle folders.
- 

## Troubleshooting Oracle Errors

Follow the instructions in this section to troubleshoot common Oracle errors.

### **ORA-01034: ORACLE not available; ORA-27101: shared memory realm does not exist**

These errors occur because the Oracle instance is not running. You could be receiving ORA-27101 because you tried to modify database parameters such as SGA size.

### **ORA-12154: TNS could not resolve service name**

This error is always related to your local copy of tnsnames.ora. Check the file in *REPOSITORY\_CLIENT\_HOME*\RMW Repository Client. It should contain the following entry:

```
RMW_REPOSITORY=
  (DESCRIPTION =
    (ADDRESS_LIST =
      (ADDRESS = (PROTOCOL = TCP)(HOST=hostname)(PORT = 1521))
    )
  )
```

```
(CONNECT_DATA = (SID=RMW21))
)
```

where *hostname* is the TCP/IP host name of your machine.

If *tnsnames.ora* exists in the correct location and does not contain syntax errors, then this error indicates that another Oracle version is installed on the machine. Uninstall the Oracle version.

## ORA-12170: TNS: Connect timeout occurred

This error occurs because of firewall issues, database down, listener down, network trouble, and the like. Contact your system administrator or on-site support services personnel for assistance.

## ORA-12505: TNS: listener could not resolve SID given in connection description

This error occurs when the SID specified in the connection was not found in the listener's tables. Check *listener.ora* in *ORACLE\_HOME\NETWORK\ADMIN* on the machine hosting the MW repository. It should contain the following entries:

```
SID_LIST_LISTENER =
  (SID_LIST =
    (SID_DESC =
      (SID_NAME = PLSExtProc)
      (ORACLE_HOME = C:\Oracle\RMW21_10201\home)
      (PROGRAM = extproc)
    )
  )
LISTENER =
  (DESCRIPTION_LIST =
    (DESCRIPTION =
      (ADDRESS = (PROTOCOL = IPC)(KEY = EXTPROC1))
      (ADDRESS = (PROTOCOL = TCP)(HOST = hostname)(PORT = 1521))
    )
  )
```

If *listener.ora* exists in the correct location and does not contain syntax errors, then this error indicates that another Oracle version is installed on the machine. Uninstall the Oracle version.

