



SERENA® CHANGEMAN® VERSION MANAGER™
GETTING STARTED GUIDE

Copyright © 1985–2005 Merant, Inc. All rights reserved.

This document, as well as the software described in it, is furnished under license and may be used or copied only in accordance with the terms of such license. Except as permitted by such license, no part of this publication may be reproduced, photocopied, stored in a retrieval system, or transmitted, in any form or by any means, electronic, mechanical, recording, or otherwise, without the prior written permission of Merant. Any reproduction of such software product user documentation, regardless of whether the documentation is reproduced in whole or in part, must be accompanied by this copyright statement in its entirety, without modification.

The content of this document is furnished for informational use only, is subject to change without notice, and should not be construed as a commitment by Merant. Merant assumes no responsibility or liability for any errors or inaccuracies that may appear in this document.

Trademarks

Serena, TeamTrack, StarTool, and ChangeMan are registered trademarks of Serena Software, Inc. The Serena logo is a trademark of Serena Software, Inc.

Merant, PVCS, and Collage are registered trademarks of Merant Inc. Dimensions, Professional, Tracker, Version Manager, Builder, Meritage, and Mover are trademarks of Merant, Inc.

All other products or company names are used for identification purposes only, and may be trademarks of their respective owners.

U.S. Government Rights

Any Software product acquired by Licensee under this Agreement for or on behalf of the U.S. Government, its agencies and instrumentalities is "commercial software" as defined by the FAR. Use, duplication, and disclosure by the U.S. Government is subject to the restrictions set forth in the license under which the Software was acquired. The manufacturer is Merant, Inc., 3445 NW 211th Terrace, Hillsboro, Oregon 97124.

Part number: MA-VMGTS-002

Publication date: April 2005

Table of Contents

Welcome to Version Manager	7
Ways to Work with Version Manager	7
Desktop Client	8
Project Command-Line Interface	8
Command-Line Interface	9
Web Client	9
WebDAV Server	9
IDE Client	9
Developer's Toolkit	10
Serena Collage Integration	10
Using Version Manager Components Together	10
Guide to Version Manager Documentation	11
Version Manager Documentation Suite	11
Using the Online Manuals	13
Accessing Online Help	14
Typographical Conventions	15
Contacting Technical Support	16
Getting Started with the Version Manager Desktop Client	17
Starting Version Manager	18
Starting the Desktop Client	18
Exploring the Version Manager Desktop	21
Tool Bar	22
Status Bar	24
Standard Menus and Context Menus	25
Header Bar	26
Project Pane	27
File Pane	29
Revision Pane	30
Filter	34
Sort	36

Chapter 1

Shortcut and Mnemonic Keys	37
Turning Off Dialog Boxes	38
Using Online Help	39
Accessing Help	39
The Help Window	40
Printing Help Topics.	44
Chapter 2	
Using Version Manager	45
Working with the Desktop Client	46
About the Sample Project Database and Scenarios	46
Using Default Settings	47
Automatically Dismissing the Results Dialog Box	47
Project Databases	48
Subprojects	49
Workspaces	50
Adding Workfiles	51
Getting and Viewing Files	52
Moving Projects and Versioned Files	53
Copying Projects and Files	53
Merge Tool	53
Locating Archives	54
Project Information Locations	54
User Workflow for the Desktop Client.	55
Opening a Project Database	55
Setting a Workspace	58
Adding Workfiles	61
Getting and Viewing Revisions	65
Checking Out and Editing Revisions.	69
Checking In Workfiles	71
Working with the Command-Line Interface	74
About the Sample Project Files and Scenarios.	74
User Workflow for the Command-Line Interface	75
Creating a vcs.cfg File	76
Adding Workfiles	79
Checking Out Revisions	80
Checking In Revisions	81
Chapter 3	
Strategies For Working With Version Manager	83
Introduction	84
Ways to Use the Desktop Client.	84
Reviewing Properties	84

Hiding Dialog Boxes	85
Using the Revision Pane to View Change History	85
Using Workspaces to Change Drives	86
Using Subprojects to Organize Files	87
Defining Archive Locations	88
Multiple Project Selection	89
Working with Version Manager 5.3/6.0	
Project Roots	89
Using the Command-Line Interface	90
Using the Project Command-Line Interface (PCLI)	90
Workspace Paths	91
Direct Versus Batched Execution	91
Using the Command-Line Interface with the PCLI	91
Using the Version Manager IDE Client	91
Working with IDE Client Projects in Version Manager	92
Working in Development Applications	92
Using the Version Manager Web Client	93
Using WebDAV Server	93
Using Meritage	93
Index	95

Welcome to Version Manager

Thank you for choosing Serena ChangeMan Version Manager, a powerful and versatile version control system that will revolutionize the way you develop software. Version Manager helps you organize, manage, and protect your software development projects on every level—from storing and tracking changes to individual files, to managing and monitoring an entire development cycle.

Purpose of this manual	This manual shows you how to start working with Version Manager, explains Version Manager concepts, and provides opportunity to practice basic tasks.
Edition status	The information in this edition applies to <i>Release 8.1 of Serena ChangeMan Version Manager</i> or later. This edition supersedes earlier editions of this manual.

Ways to Work with Version Manager

Your Version Manager installation can consist of any combination of Version Manager components, depending on the needs of your environment. In addition, you can integrate Version Manager with other Professional products, such as TeamTrack or Configuration Builder, or with your specific development tools.

Version Manager includes the following:

- Desktop Client
- Project Command-Line Interface
- Command-Line Interface
- Web Client
- WebDAV Server
- IDE Client
- Developer's Toolkit
- Serena Collage Integration

Desktop Client

The desktop client offers the most comprehensive functionality of any component, and is now more intuitive and easier to use than ever before. The desktop client provides more privileges and better security than the command-line interface.

The desktop client is appropriate for new users, existing users, and administrators of Version Manager. Use the desktop client to perform end-user functions such as checking in and checking out files. You can also use the desktop client to perform administrative functions, such as creating, configuring, and maintaining project databases, and setting up security. For more information, refer to the *Serena ChangeMan Version Manager Getting Started Guide*, the *Serena ChangeMan Version Manager User's Guide*, and the *Serena ChangeMan Version Manager Administrator's Guide*.

Project Command-Line Interface

The Version Manager project command-line interface (PCLI) lets you work with project databases and projects using a command-line interface in addition to using the other Version Manager interfaces. For example, using the PCLI, you can:

- Create project databases and projects
- Set workfile locations, archive locations, and configuration files
- Get the current workfile locations, archive locations, and configuration file names and locations
- List project databases, versioned files, and the attributes of different entities
- Add workfiles to projects
- Import archives to projects

You can use the PCLI to automate your access to Version Manager archives by writing PCLI scripts. For more information, refer to the *Serena ChangeMan Version Manager PCLI User's Guide and Reference*.

Command-Line Interface

The command-line interface consists of a group of commands that you use to perform actions on Version Manager archives. The command-line interface is appropriate for users who work in an environment where archives have been created and maintained using the command-line interface. For more information, refer to the *Serena ChangeMan Version Manager Command-Line Reference Guide*.

Web Client

The Version Manager web client interface is an optional web browser-based component of Version Manager that gives you access to Version Manager projects via the Internet or an intranet using the Version Manager Server. Version Manager web client is appropriate for environments where users need to access projects from remote or mobile locations and for any environment that benefits from a client/server architecture.

The Version Manager web client provides a subset of Version Manager functionality designed for users who do not need access to administrative features. The Version Manager web client requires that you create and configure projects using the desktop client before you can connect users to those projects with the web browser interface. For more information, refer to the *Serena ChangeMan Version Manager Web Client User's Guide*.

WebDAV Server

The Version Manager WebDAV Server implements the WebDAV protocol and also extends the protocol to enable automatic versioning from WebDAV clients. WebDAV Server works without requiring changes to WebDAV clients; if a client implements WebDAV, then that client will work with the Version Manager WebDAV Server. For more information, refer to the *Serena ChangeMan Version Manager WebDAV Server Implementation Guide*.

IDE Client

The Version Manager IDE client provides access to Version Manager projects from within numerous integrated development environments

(IDEs). Using the IDE client, you can perform Version Manager functions, such as checking files in and out of archives, assigning version labels, and generating reports, without leaving your development application.

The Version Manager IDE client is certified for use with a number of leading development environments including Microsoft Visual C++, Microsoft Visual Basic, Sybase PowerBuilder, Allaire ColdFusion Studio, and Microsoft FrontPage. See the Serena ChangeMan Version Manager IDE Client Implementation Guide for information on features available in each IDE.

Developer's Toolkit

The Developer's Toolkit (DTK) is an application programming interface (API) for developers who want to integrate Version Manager and Configuration Builder functionality into custom applications. The DTK allows you to work with most features of Version Manager. For more information, refer to the Serena ChangeMan Developer's Toolkit Reference Guide.

Serena Collage Integration

The SerenaCollage Integration with Version Manager enables web application development teams to automate all management and deployment of files. By combining the deployment management of Collage with Version Manager, you no longer need to worry about manually extracting your web application files and transferring them to your web servers; Version Manager and Collage will do all of this for you. For more information, see "Integrating with Collage" in the *Serena ChangeMan Version Manager Administrator's Guide*.

Using Version Manager Components Together

Your organization can access Version Manager features through a mix of components. In some organizations, only the desktop client will be needed; others may benefit from using all of the components. Whether you want to work from a remote location, automate processes with scripts, or perform source control actions from within a development environment, Version Manager has the features you need.

The following table illustrates how Version Manager components can be used together to meet the needs of different users within an organization.

Users	Desktop Client	Web Client	Dev. Int.	PCLI/ CLI	DTK
Local Users	X			X	
Remote Users		X			
IDE Users			X		
Administrators	X			X	
Integrators			X	X	X

Guide to Version Manager Documentation

The following sections provide basic information about Version Manager documentation.

Version Manager Documentation Suite

The Version Manager documentation set includes the following online manuals.

This document...	Explains how to...
Installation Guide	Install and configure Version Manager.
Getting Started Guide	Start Version Manager, understand Version Manager concepts, and practice basic tasks.
User's Guide	Use Version Manager's desktop client. This manual contains conceptual and "how to" information on basic and advanced Version Manager tasks.

This document...	Explains how to...
Administrator's Guide	Configure, administer, and maintain Version Manager projects and archives using the desktop client or command-line interface.
PCLI User's Guide and Reference	Use the project command-line interface (PCLI) to perform command-line operations on Version Manager projects. This manual provides information about how to use the PCLI and provides an alphabetical reference to each PCLI command.
Command-Line Reference Guide	Use the command-line interface to perform Version Manager functions. This manual provides comprehensive information about the commands, directives, and privileges available through the command-line interface.
Command-Line Quick Reference Guide	Use the command-line interface to perform Version Manager functions. This manual provides basic information about the most frequently used commands, directives, and privileges.
Version Manager Web Client User's Guide	Perform remote version control functions using the Version Manager web client interface.
Version Manager WebDAV Server Implementation Guide	Set up and use a WebDAV-compliant client, such as Macromedia Dreamweaver, Microsoft Web Folders, Photoshop, or Adobe Acrobat, to automatically version files.
Version Manager IDE Client Implementation Guide	Set up and use the Version Manager IDE client to perform version control functions from within supported integrated development environments (IDEs).

This document...	Explains how to...
Serena ChangeMan Developer's Toolkit Reference Guide	Use the Version Manager API to integrate Version Manager and Serena Configuration Builder functionality into custom applications.
Serena ChangeMan Builder for Professional User's Guide	Integrate the Openmake build management system into Version Manager.

Using the Online Manuals

The Serena online manuals use the Adobe Portable Document Format (PDF). To view PDF files, use Adobe® Reader®, which is freely available from www.adobe.com.



TIP Be sure to download the *full version* of Reader. The more basic version does not include the search feature.

This section highlights some of the main Reader features. For more detailed information, see the Adobe Reader online help system.

The online manuals include the following features:

- **Bookmarks.** All of the online manuals contain predefined bookmarks that make it easy for you to quickly jump to a specific topic. By default, the bookmarks appear to the left of each online manual.
- **Links.** Cross-reference links within an online manual enable you to jump to other sections within the manual and to other manuals with a single mouse click. These links appear in blue.
- **Printing.** While viewing a manual, you can print the current page, a range of pages, or the entire manual.
- **Advanced search.** Starting with version 6, Adobe Reader includes an advanced search feature that enables you to search across multiple PDF files in a specified directory. (This is in addition to using any search index created by Adobe Catalog—see step 3 below.)

To search within multiple PDF documents at once, perform the following steps (requires Adobe Reader version 6 or higher):

- 1 In Adobe Reader, select Edit | Search (or press CTRL+F).
- 2 In the text box, enter the word or phrase for which you want to search.
- 3 Select the **All PDF Documents in** option, and browse to select the folder in which you want to search. (If you have a document open that has an Adobe Catalog index attached, you can leave the **In the index named...** option selected to search across all the manuals in the index.)
- 4 Optionally, select one or more of the additional search options, such as **Whole words only** and **Case-Sensitive**.
- 5 Click the **Search** button.



NOTE Optionally, you can click the **Use Advanced Search Options** link near the lower right corner of the application window to enable additional, more powerful search options. (If this link says **Use Basic Search Options** instead, the advanced options are already enabled.) For details, see Adobe Reader's online help.

Accessing Online Help

Online help is available for the Version Manager desktop and web clients, the command-line interface, the project command-line interface, and the IDE client.


- **Version Manager desktop client:** Select Help | Help Topics to access online help, or click Help from a dialog box. Press F1 from a field to access context-sensitive online help. The help system provides procedural and conceptual information about using the Version Manager desktop client.
- **Command-Line Interface:** Type command -h to access online help. This help system provides information about command-line options.
- **Project Command-Line Interface:** Type pcli command -h or pcli -h to access online help. This help system provides information about command options.

- **Version Manager web client:** On the Help tab, select Help Topics to access online help, or click Help from a dialog box or page to access context-sensitive online help. The help system provides procedural and conceptual information about using the Version Manager web client.
- **Version Manager IDE client:** To access online help for the IDE client, select Serena ChangeMan Version Manager IDE Client | Serena ChangeMan Version Manager IDE Client Help from the Serena ChangeMan Version Manager program group in your Start menu, click Help from a dialog box, or press F1 from a field to access context-sensitive online help. The help system provides procedural and conceptual information about using the IDE client.

Typographical Conventions

The following typographical conventions are used in the online manuals and online help. These typographical conventions are used to assist you when you use the documentation; they are not meant to contradict or change any standard use of typographical conventions in the various product components or the host operating system.

Convention	Explanation
italics	Introduces new terms that you may not be familiar with and occasionally indicates emphasis.
bold	Emphasizes important information and field names.
UPPERCASE	Indicates keys or key combinations that you can use. For example, press the ENTER key.
monospace	Indicates syntax examples, values that you specify, or results that you receive.
monospaced italics	Indicates names that are placeholders for values you specify; for example, <i>filename</i> .
monospace bold	Indicates the results of an executed command.

Convention	Explanation
vertical rule	Separates menus and their associated commands. For example, select File Copy means to select Copy from the File menu. Also, indicates mutually exclusive choices in a command syntax line.
brackets []	Indicates optional items. For example, in the following statement: SELECT [DISTINCT] , DISTINCT is an optional keyword.
. . .	Indicates command arguments that can have more than one value.
	Shows you which shortcut button to click. Shortcut buttons are placed in the margin.

Contacting Technical Support

Registered customers can log in to <http://support.serena.com/>.

Chapter 1

Getting Started with the Version Manager Desktop Client

Starting Version Manager	18
Exploring the Version Manager Desktop	21
Using Online Help	39

Starting Version Manager

Once you install Serena ChangeMan Version Manager, you are ready to begin using the product. The installation process automatically configures your workstation for your specific platform.

Starting the Desktop Client

The first time you start Version Manager, the Welcome to Serena ChangeMan Version Manager dialog box appears, which provides options for you to:

- Create a new project database, unless this feature has been restricted.
- Open the sample project database.
- Open the project root that was last opened in Version Manager.

The next time you start Version Manager, the Welcome to Serena ChangeMan Version Manager dialog box provides options for you to open the previously opened project database(s).

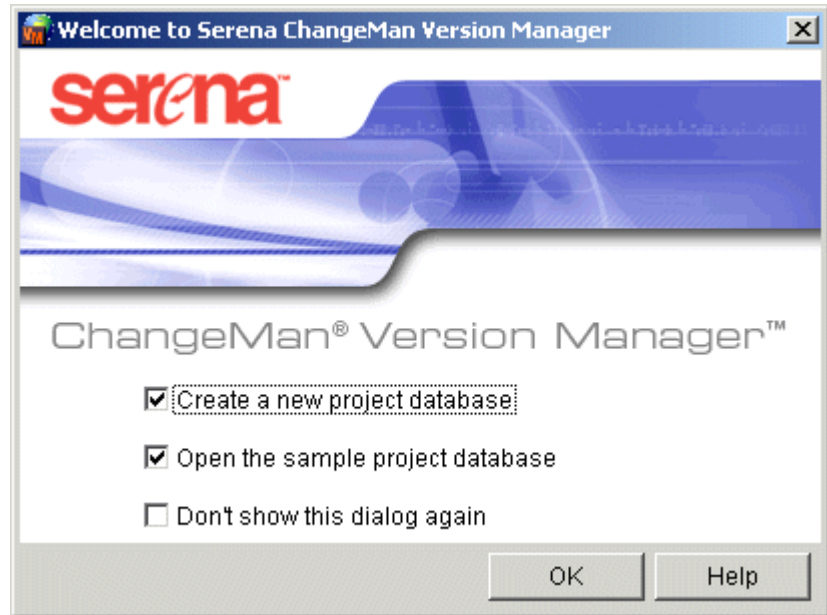
The Welcome to Serena ChangeMan Version Manager dialog box will not show the next time you start Version Manager if you select the **Don't show this dialog again** check box.

To start the desktop client:

- 1 Do one of the following:
 - **On Windows:** From the Start menu, select Programs | Serena | Serena ChangeMan Version Manager X.X.X | Serena ChangeMan Version Manager.
 - **On UNIX:** Navigate to the `/usr/serena/vm/<os>/bin` directory and run `pvcsvmux`.

The `-d` option of `pvcsvmux` writes debug information to the console.

Version Manager starts and the Welcome to Serena ChangeMan Version Manager dialog box opens, as shown in the following graphic.

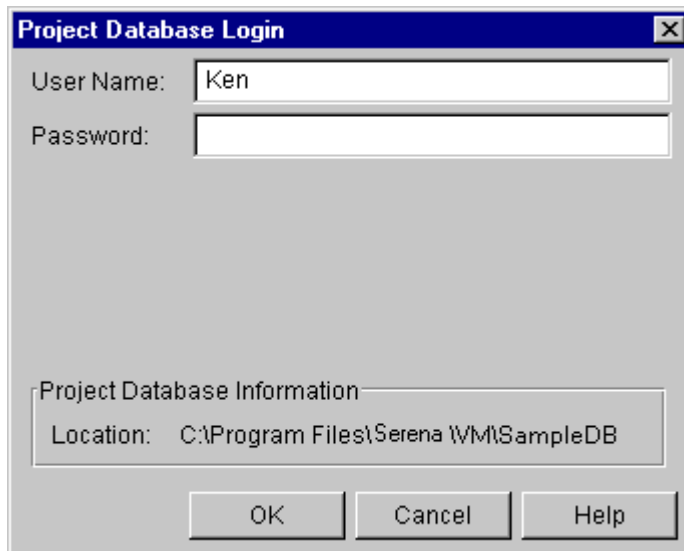


- 2 Verify that the **Open the sample project database** check box is selected.

Optionally, to create a new project database, select the **Create a new project database** check box. Version Manager creates a project database using default configuration values. You can add your workfiles to it as a quick way to start using Version Manager, or you can use the new project database along with the sample project database to practice Version Manager procedures. The creation of a new project database may be restricted by the administrator.

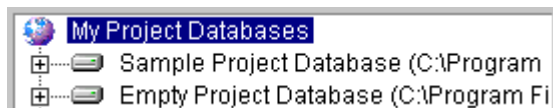
- 3 Click **OK**.

The Login dialog box appears.

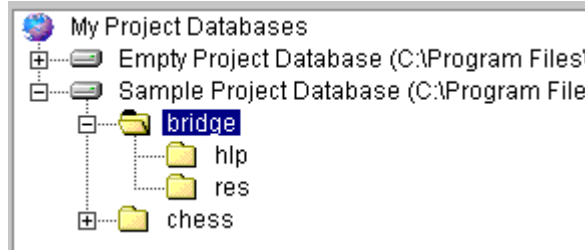


- 4 Log in to the sample project database by entering Admin as the User Name, leaving the password blank, and clicking **OK**.

Version Manager opens and displays the project databases, depending on the options you selected in Step 2, in the Project pane below.



- 5 Expand the contents of the sample project database by doing one of the following:
 - Click the + signs.—or—
 - Highlight the project database and press the right arrow key.

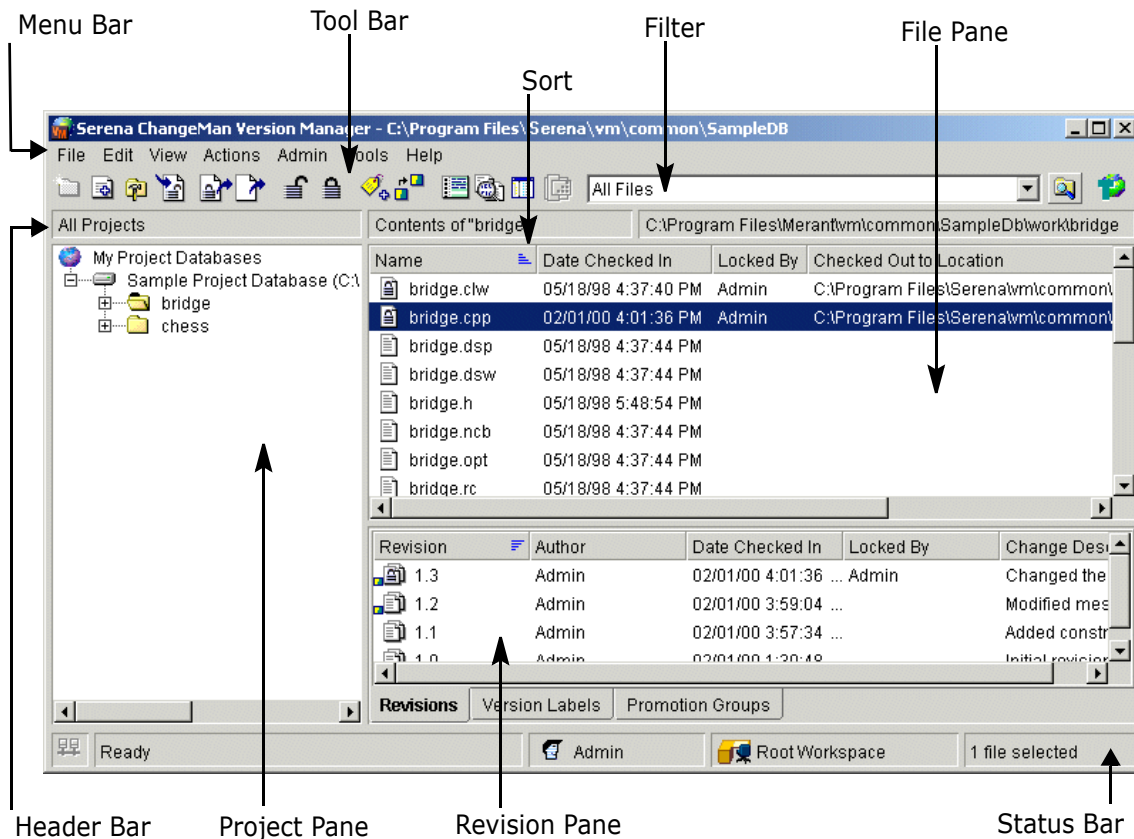


The sample project database contains sample files that you can work with in the section, "[Exploring the Version Manager Desktop](#)" on page [21](#)."

Exploring the Version Manager Desktop

Now that you have started Version Manager and opened the sample project database, you can use the sample files to explore the desktop.
















This section identifies and describes some of the key features that comprise the interface.





Tool Bar

The tool bar provides shortcut buttons for performing commonly used functions, such as check in, check out, lock, and unlock. Administrators can add buttons to the toolbar that invoke other applications. Tool bar information is stored in a tool bar configuration file, which administrators associate with project databases. When a tool bar configuration file is associated with a project database, the tool bar loads automatically whenever the project database is opened or selected. For more information, refer to "Adding Custom Tools" in the *Serena ChangeMan Version Manager Administrator's Guide*.

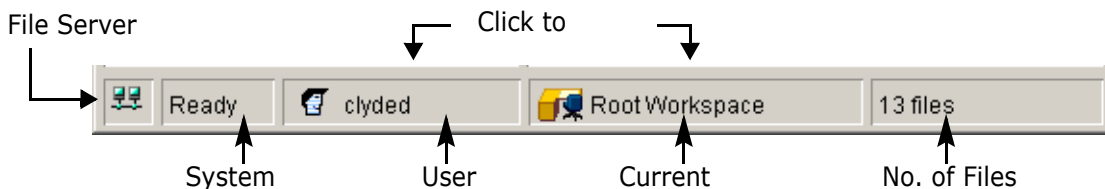
The default tool bar buttons include the following:

Click this button...	To do this...
	Create a new project.
	Add workfiles to project or project database.
	Set the workfile location for the currently selected item.
	Check in a workfile.
	Check out a revision.
	Get a revision.
	Unlock a revision.
	Lock a revision.
	Assign a version label.
	Promote to next promotion group.
	Show history report for item.
	Show differences for item.
	Toggle (show or hide) revision pane.
	Launch Serena Tracker.
	Indicates that the File pane is displaying the versioned files, projects, and subprojects contained within the selected project or project database.





Click this button...	To do this...
	Indicates that the File pane is displaying only the versioned files within the selected project, subproject, or project database.
	Launch Serena ChangeMan Builder.

Status Bar

The status bar is located at the bottom of the window, as shown below.



The status bar contains the following information and shortcuts:

- File Server Status—indicates the status of the Version Manager File Server (click to refresh status and display more information):
 -  No file server is configured.
 -  One or more configured file servers are not responding.
 -  All configured file servers are working correctly.
- System Message – Either displays information about the current status of Version Manager, such as "Ready" or "Loading...", or a message specific to the current action, such as "Checking In".
- User ID – Displays the name of the user logged in to the selected project database. Click this field to access the Switch User dialog box.
-  Workspace – Displays the name of the current workspace set on the selected project database. There are two types of workspaces, public and private. Generally, a public workspace is created by the administrator and is indicated by a desk icon. A private workspace is generally created by an individual Project Team Member and is indicated by a desk icon with a figure. Click this field to access the Set Workspace dialog box.

- Files Selected – Displays the number of files selected. When you select a project, the total number of files in the project is displayed. When you select one or more files, the total number of files selected is displayed.

Standard Menus and Context Menus

Two types of menus are available in the Version Manager desktop client:

- Standard menus, which are available from the menu bar
- Context menus, which appear when you right-click an item

From the standard menus of the menu bar, you can access all Version Manager features and functions, including all tasks and the online help.

Optionally, your administrator can configure a custom Tools menu that you can access from the menu bar. From this Tools menu, you can access the applications your administrator has configured for the project database. If the administrator has not configured any user tools for the project database, the Tools menu is not available.

Quick access to common tasks

From context menus, you can access the most common tasks performed on the item you have selected.

Standard Menu

Get...	Ctrl+G
Check Out...	Ctrl+O
Check In...	Ctrl+I
Unlock...	
Lock...	
Version Label	▶
Promotion Group	▶
Show History...	Ctrl+H
Show Differences...	Ctrl+D
Show Merge...	Ctrl+M
Show Journal...	Ctrl+J
Delete Revision...	

Example of the Actions menu when a revision is selected.

Context Menu

View File...
Edit File...
Get...
Check Out...
Check In...
Unlock...
Lock...
Assign Version Label...
Promote To Next Group...
Show History...
Delete
Properties

Example of the context menu when a revision is selected.

Functions that are grayed out in standard menus and context menus are unavailable because the function:

- Is not applicable to the item you currently have selected
- Has been disallowed by your administrator

Header Bar

The header bar contains the following three columns:

- All Projects – Contains the Project pane. You can access open project databases and the projects and subprojects they contain from the Project pane.

- Contents of – Displays the contents of the item selected in the Project pane. If you set a filter, the name of this field changes to "Filtered Contents of".
- Workfile Location – Displays the workfile location defined for the selected project database, project, subproject.



Project Pane

The Project pane displays open project databases, projects, and subprojects.



Inherit settings
from project
databases





A project database is a named, hierarchical collection of projects, subprojects, and versioned files. Project databases store configuration and access-control database information, which affects how you work with the projects within it.

Project databases are represented by the following icons:

This icon...	Represents...
	An open project database. When you open a project database, the name and location of the project database are shown next to the icon. When you open a project database that was created using an earlier release of Version Manager, only the location of the project database is shown.
	A selected project database. When you select a project database, you can perform an action on the contents of the entire project database.

A project is a logical grouping of versioned files and subprojects. Projects inherit configuration settings from the project database; however, you can also apply configuration settings to individual projects. Projects are represented by the following icons:

This icon...	Represents...
	A project or subproject (yellow).
	A configured project (yellow). These configuration settings override configuration settings inherited from the project database.

This icon...	Represents...
	A project assigned an access control database that does not contain your user ID (yellow). You do not have privileges to access this project.
	A 5.3/6.0 project or folder (blue).
	A configured 5.3/6.0 project (blue). These configuration settings override configuration settings inherited from the master configuration file of the project root.
	A 5.3 project assigned an access control database that does not contain your user ID (blue). You do not have privileges to access this project.

From the Project pane, you can:

- Expand and collapse the view of project databases, projects, and subprojects.
- Right-click My Project Databases to access a context menu, which provides a quick way to create or open a project database.
- Right-click a project database or project to access a context menu, which provides access to frequently used functions.
- Resize the width or height of the Project pane.
- Select multiple projects on which to perform an action.
- Drag and drop projects to other project databases or projects. Dragging and dropping projects enables you to copy projects and share the archives between project databases.
 - If you drag and drop a project within the same project database, Version Manager moves the project.
 - If you drag and drop a project to a different project database, Version Manager copies the project.
 - If you drag and drop a project within the same project database while holding down the CTRL key, Version Manager copies the project.
- Drag and drop Version Manager 5.3/6.0 projects into project databases to copy the projects into the project databases. Copying 5.3/6.0 projects into project databases upgrades the projects to the




new format and enables you to take advantage of the functions not available in Version Manager 5.3/6.0.

File Pane

The File pane provides access to the versioned files contained within a selected project database, project, or subproject. A versioned file is a file placed under version control. The File pane contains the following fields:

This field...	Identifies...
Name	The name of the versioned file.
Date Checked In	The most recent date and time the versioned file had a revision checked in on the trunk. If no revisions exist, then the date and time the archive was created are displayed.
Locked By	The user(s) who holds a lock on the item.
Checked Out to Location	The path(s) the file was checked out to, if a revision is locked and checked out.

Files are represented by the following icons:

This icon...	Represents a...
	Versioned file that does not contain any locked revisions.
	Versioned file that contains a locked revision.
	Versioned file that has lost the association with its archive. This occurs when the physical location of an archive is moved. Importing the archive restores the association.

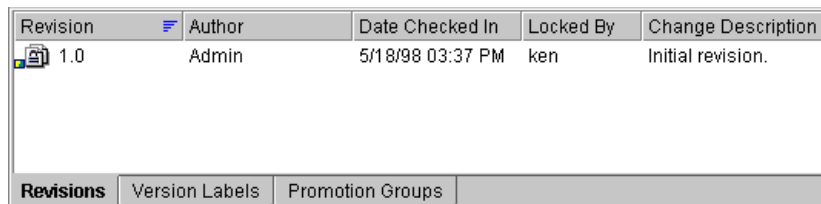
From the File pane, you can:

- Click a column header to sort the files by that column.
- Click a sort order button in a column header to reverse the sort order.
- Right-click a file to access a context menu, which provides quick access to frequently used functions.
- Double-click a file to view or edit a revision.

- Drag and drop files into other projects or project databases. Dragging and dropping files into another project within the current project database moves the files. Dragging and dropping files into a different project database copies the files.
- Resize the width of the columns displayed in the File pane.
- Scroll horizontally or vertically.
- Type a character to jump the display to the first file that starts with that character. (Click anywhere in the File pane first.)
- Filter the file display by file type (wild card), locks, version labels, or promotion groups using the Filter drop-down menu.
- Filter the file display nonrecursively by toggling the file filter button. A nonrecursive display lists only the versioned files that meet the filter criteria for the selected project in the Project pane; it does not show the versioned files in the project's subprojects. This filter is the default.
- Filter the file display recursively by toggling the File Filter icon. A recursive display lists all of the subprojects and projects in the File pane that are contained in the project selected in the Project pane, along with versioned files that meet the filter criteria.

Revision Pane

Use the Revision pane to view the revision details of a versioned file. To open the Revision pane, select View | Show Revisions or click the Show Revisions tool bar icon. The Revision pane is only displayed if a file is selected. If more than one file is selected, then no information is displayed in the Revision pane. If the Revision pane is showing, then the Hide Revisions option is displayed as a menu option.



Revision	Author	Date Checked In	Locked By	Change Description
1.0	Admin	5/18/98 03:37 PM	ken	Initial revision.

Revisions Version Labels Promotion Groups










Revisions tab

The Revision pane changes dynamically to reflect the information specific to the selected versioned file. Depending on the versioned file, the Revision pane can display up to three tabs:

- Revisions tab
- Version Labels tab
- Promotion Groups tab

The Revision pane always contains a Revisions and a Version Labels tab. If a promotion model is in effect, the Promotion Group tab is also displayed.

Revisions are represented by the following icons:

This icon...	Represents a...
	Revision
	Locked revision
	Revision assigned to a promotion group
	Locked revision assigned to a promotion group
	Revision assigned a version label
	Locked revision assigned a version label
	Locked revision assigned a version label and a promotion group
	Trunk (the main line of development)
	Branch (a separate line of development that diverges from the trunk or another branch)

From the Revision pane, you can:

- Click a branch to review information about the branch revisions.

- Click the Promotion Groups, Version Labels, or Revisions tab to view different types of information about the revision.
- Click a column header to sort the files by that column.
- Click a sort order button in a column header to reverse the sort order.
- Right-click a revision, version label, or promotion group to access a context menu, which provides quick access to frequently used functions.
- Resize the width of the fields displayed on each tab.
- Resize the width or height of the Revision pane.
- Scroll horizontally or vertically.

About the Revisions Tab

By default, the Revisions tab is at the front of the Revision pane. The Revisions tab lists all of the revisions associated with the selected versioned file. For each revision, the tab includes the revision number, the author of the revision, the date the revision was checked in, the users who have the revision locked, and the change description.

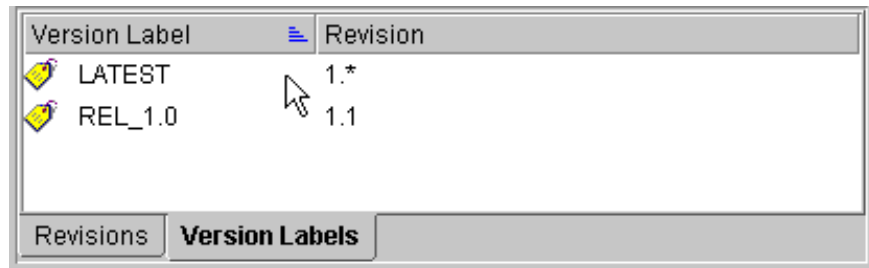
You can also tell whether a revision is part of a branch, belongs to a promotion group, is locked, or has a version label assigned to it by looking at the icon.

The Revisions tab contains the following fields:

This field...	Identifies the...
Revision	Number assigned to the revision.
Author	User ID of the author of the revision.
Date Checked In	Date and time the revision was checked in.
Locked By	User(s) holding a lock on the revision.
Change Description	Description of the modifications contained in the revision.

About the Version Labels Tab

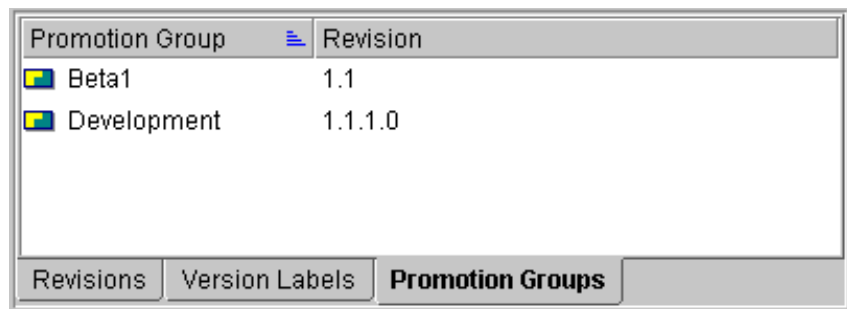
Click the Version Labels tab to move it to the front.



The Version Labels tab identifies the version label(s) assigned to each revision number. If no version labels have been assigned to the Versioned file, this display is blank.

About the Promotion Groups Tab

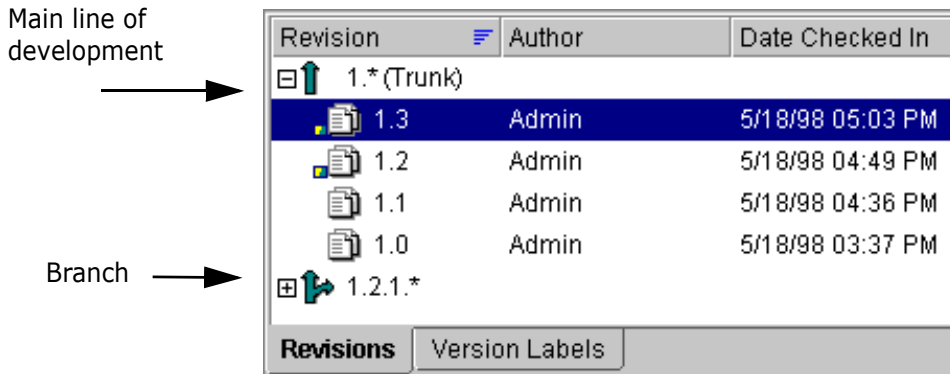
Promotion groups assigned to the versioned file can be reviewed in the Promotion Groups tab. If a promotion model has not been defined for the project or project database, this tab does not appear. Click the tab to move it to the front.



The Promotion Groups tab identifies the promotion group assigned to each revision number.

Reviewing Branches

If the selected versioned file contains a branch, the Revisions tab shows the details of the branch, as shown below.



When a branch exists, the Revisions tab displays the revisions of the main line of development (trunk) and its branches. You can expand or collapse the view of the branch or main line of development by clicking the + or - signs. For more information about branching and merging, refer to the *Serena ChangeMan Version Manager Administrator's Guide*.

Filter

Perform actions on groups of files

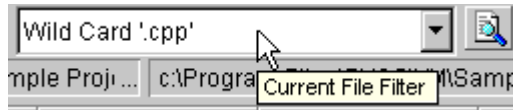
By defining a filter, you can modify the display of versioned files in the File pane and find the versioned files you need faster. By narrowing the file display to only those you need, you can perform actions, such as check out, on the entire group of versioned files by selecting all (CTRL+A) of the filtered files.

You can filter your view to display only versioned files that:

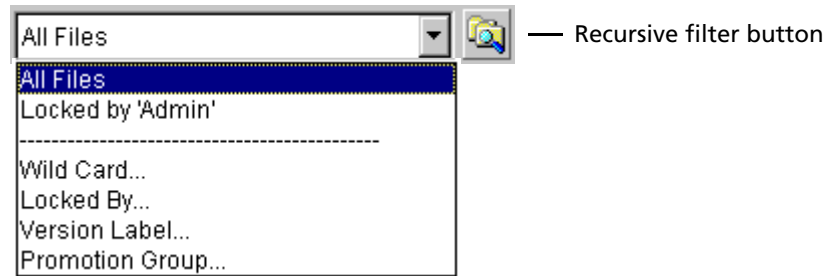
- Are locked by a specific user(s)
- Match a wildcard filename search
- Match a specified promotion group or version label
- Differ in terms of revision number, modification time, or revision contents between:
 - Two version labels
 - Two promotion groups

- A version label and a promotion group

You can quickly set or define a filter using the filter drop-down menu located in the upper right corner of the desktop, as shown below.



Version Manager saves the last four filters you've defined. You can access these saved filters from the View | Filter menu or the Filter drop-down menu.





Filter recursively

You can also change the display by using a recursive filter, which filters the current project and its subprojects, as shown below.

Name	Date Checked In	Locked By
vvarinaPlay.java	5/18/98 04:07 AM	
<ul style="list-style-type: none"> /chess/client/board <ul style="list-style-type: none"> board.jpr 5/17/98 03:37 PM Boardsquares.java 5/17/98 03:37 PM Chessboard.java 5/17/98 03:37 PM CVS.java 5/17/98 03:37 PM MoveTuple.java 5/17/98 03:37 PM PromotionDialog... 5/17/98 03:37 PM /chess/client/images <ul style="list-style-type: none"> cmpieces.gif 5/17/98 03:37 PM IBMBOARD.GIF 5/17/98 03:37 PM 		

To set a nonrecursive (not including projects) or recursive (including projects) filter, use the following tool bar buttons:

Click this button...	To do this...
	Filter only the current project, excluding subprojects.
	Filter the current project or project database, including all subprojects.

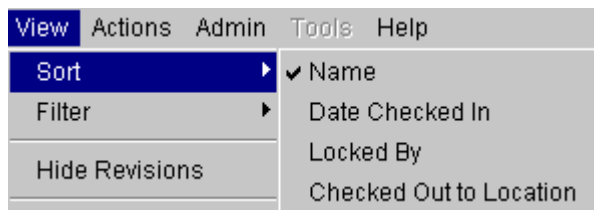
For more information about filtering the file display, refer to the Serena ChangeMan Version Manager User's Guide.

Sort

By default, files are sorted alphabetically by name. However, you can modify the sort order to display files according to the lock status, modification date, and check out location.


There are two ways you can sort the display of files:

- Select View | Sort, as shown below.

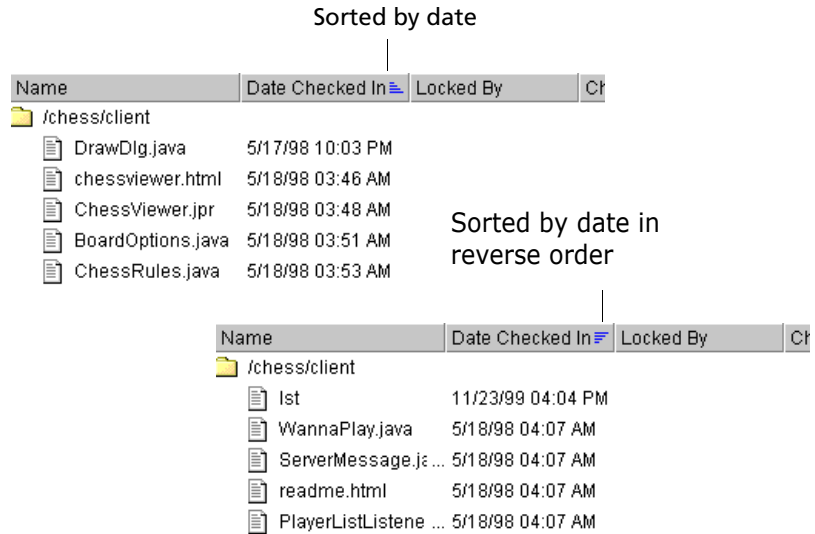


- Click a column heading, such as Name, Date Checked In, Locked By, or Check Out to Location, to sort on that field.

Reverse the sort order to modify the display

You can also reverse the sort order by clicking the sort order button (). The reverse sort order inverts the display of files. For example, if you sort the files by Date Checked In, the files most recently modified

appear at the bottom of the display. To display the files most recently modified at the top of the File pane, click the sort order button.



Shortcut and Mnemonic Keys

Shortcut and mnemonic keys provide quick methods of navigating through the desktop client interface. These keys provide access to functions listed on menus or dialog boxes.

When a function can be completed using shortcut keys, the keys are listed on the menu next to the function, as shown below.

Function	Shortcut keys
Get...	Ctrl+G
Check Out...	Ctrl+O
Check In...	Ctrl+I

To use shortcut keys, press and hold the CTRL key and press the corresponding shortcut key. Shortcut keys are available for the following functions.

Function:	Shortcut Keys:
Add Workfiles	CTRL+F
Check In	CTRL+I
Check Out	CTRL+O
Get	CTRL+G
Refresh	CTRL+R
Select All	CTRL+A
Show Differences	CTRL+D
Show History	CTRL+H
Show Merge	CTRL+M
View Properties	CTRL+ENTER
Set WorkFile Location	CTRL + W
Create Project	CTRL + P
Show Journal	CTRL + J



NOTE On Windows, press ALT to access the menu bar.

Mnemonic Keys

Mnemonic keys are available in most message boxes. Mnemonic keys allow you to use your keyboard to make basic selections, by pressing the underlined character, for example, Y for Yes, N for No or 'o' in Format.

Turning Off Dialog Boxes

Streamline your work process

To streamline your work process, you can turn off dialog boxes for certain actions, such as the Check Out dialog box, so that when you perform an action, Version Manager completes the task without prompting you for

more information. Instead, Version Manager uses the values entered in the dialog box the last time the dialog box was used.

Using Online Help

The online help system provides comprehensive information about Version Manager procedures and concepts. It is HTML based and, on Windows systems, will open in your default HTML browser.

On Linux and UNIX systems, you must specify the location of a browser in Version Manager. See the Version Manager Installation Guide for more information.



NOTE Some help features are not supported on older browsers. For the most up-to-date browser requirements, see the readme file (readmevm.html). This information is also in the Version Manager readme file.

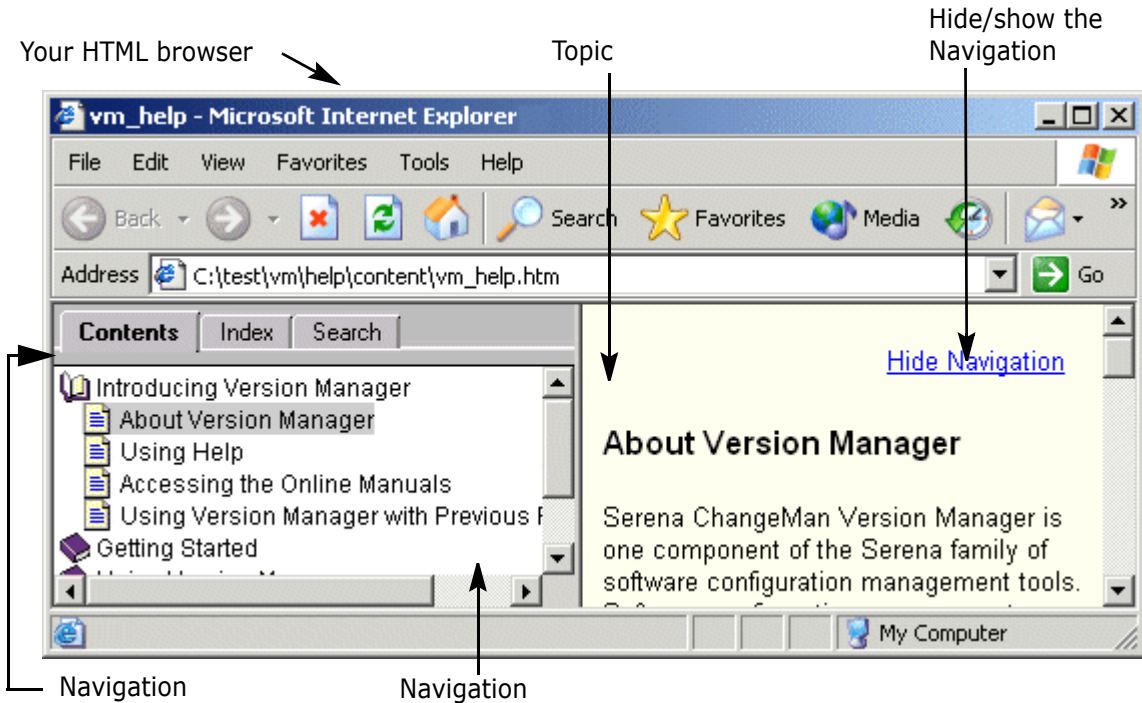
Accessing Help

There are several ways you can access online help:

- From the menu bar, select Help | Help Topics to open the help system.
- From a dialog box, click Help to access a help topic specific to the dialog box.
- From a field, press F1 to access context-sensitive help specific to the field.
- From the main window, press F1 to open the help system.

The Help Window

The online help will appear similar to the following image, but will vary somewhat depending on which browser you are using.



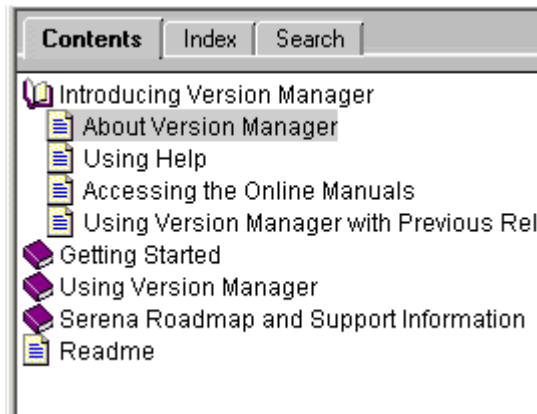
The left pane, the Navigation pane, has three tabs: Contents, Index, and Search. Topics selected in the left pane are displayed in the right pane, the Topic pane.

Show/Hide the Navigation Pane

When you launch help from a dialog box by clicking the Help button, the topic related to that dialog box is opened, but the Navigation pane is not displayed. To display the Navigation pane, click the Show Navigation link at the top of the topic. To hide the Navigation pane, click the Hide Navigation link.

Using the Table of Contents

The Contents tab appears in the left pane of your HTML browser window.



In the Table of Contents, you can:

- Select a help topic to display it in the Topic pane.
- Use the standard Windows navigation keys by highlighting a collapsed item and pressing the right arrow key to expand it, or by highlighting an expanded item and pressing the left arrow key to collapse it.

Using the Index

The Index tab appears in the left pane of your HTML browser window.



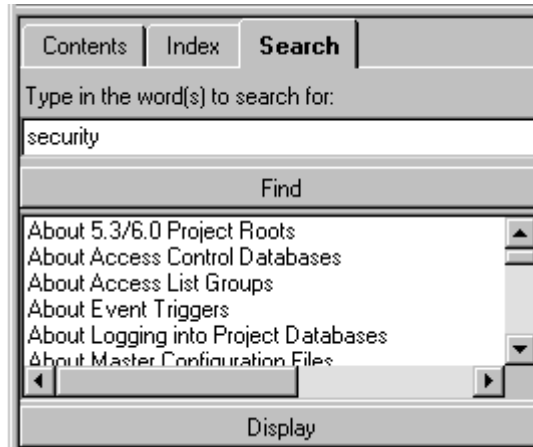
To find a word or phrase:

- 1 Enter one or more words in the Type in the keyword to find field. As you type, the keyword list scrolls to the closest match.
- 2 To see what topics are associated with a selected keyword, double-click it or click the Display button.
- 3 One of the following will occur:
- 4 If only one topic is associated with the keyword, the topic is opened in the Topic pane.
- 5 Otherwise, a dialog box appears with a list of associated topics. Select a topic and double-click it. The topic opens in the Topic pane.

Using Search

The Search utility lets you perform a full-text search for a word or phrase throughout the entire help system. To use the Search utility, click the

Search tab. The Search tab appears in the left pane of your HTML browser window.



To search for a word or phrase:

- 1 Enter one or more words in the **Type in the word(s) to search for** field and click the **Find** button. The Search utility searches through all of the help topics and returns a list of topics that contain matches to the words you entered.
- 2 To view a topic, double-click it or select it and click the **Display** button. The topic is displayed in the Topic pane.

You can use the following Boolean operators to define your search.

To search for...	Enter...	Finds topics containing...
Two or more words	<i>word-1 AND word-2</i>	Both <i>word-1</i> and <i>word-2</i> NOTE: Whenever you enter two or more words, the AND is assumed; the search will find all topics containing the words, not just those topics containing the string <i>word-1 word-2</i> .
At least one of a set of words	<i>word-1 OR word-2</i>	Either <i>word-1</i> or <i>word-2</i> or both
One word while excluding another	<i>word-to-find NOT word-to-exclude</i>	The <i>word-to-find</i> but not the <i>word-to-exclude</i>

Printing Help Topics

To print a help topic, use the print feature of your browser.



NOTE To print a topic, you may need to click in the Topic pane before selecting Print. Otherwise, if you last clicked in the Navigation pane, the Table of Contents may print instead of the topic you selected.

Chapter 2

Using Version Manager

Working with the Desktop Client	46
Working with the Command-Line Interface	74

Working with the Desktop Client

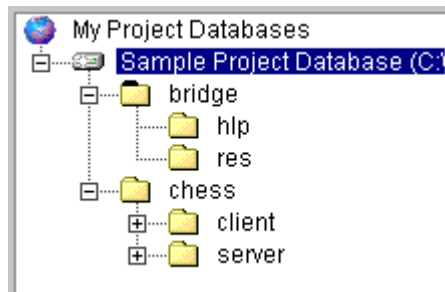
In this section, you will create a new project and work with the sample project database files using the desktop client.

About the Sample Project Database and Scenarios

By default, when you install Serena ChangeMan Version Manager, the sample project database is installed to the following locations:

- **On UNIX:** `/usr/serena/vm/common/sampledb`
- **On Windows:** `VM_Install\vm\common\sampledb`
where `VM_Install` is the location in which you installed Version Manager, such as `d:\program files\serena\`

If you modify the default Version Manager installation location, the sample project database is installed in a location relative to the `vm` directory. In this location, there are sample files for three games: Chess, Checkers, and Bridge. However, only the files in the Chess and Bridge projects have been archived. The Chess and Bridge projects are shown below.



The Checkers files have not been archived—you will do this yourself in the following exercises. You will also perform some of the basic tasks that a Developer might perform while developing a new application.

While working through these exercises, assume the following:

- You work as a Developer for a large company that designs computer games.
- Your task is to begin work on a new game: Checkers.

- Your administrator has already set up a project database for the games under development.
- Your administrator assigned you a user name (Ken) that you'll need to use when logging in to the sample project database.

Using Default Settings

In each dialog box, Version Manager supplies a set of default options to help you perform the action faster and easier. The exercises in this chapter use these default settings. These default options are defined by the configuration settings applied to the project database. If your administrator modifies the default configuration settings, the options set in each dialog box match those set by your administrator.

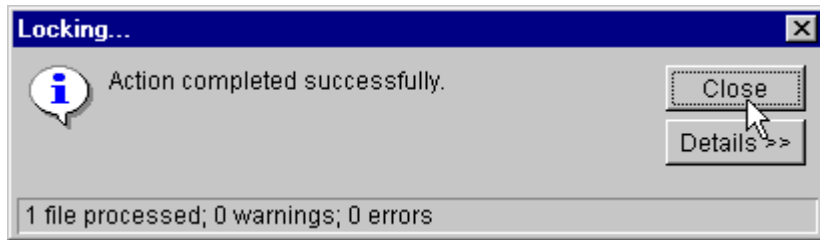
For example, you could quickly check in a workfile by selecting the versioned file, selecting Actions | Check In, entering a description, and then clicking OK. If you (or your administrator) have not changed any configuration settings, Version Manager automatically:

- Checks in the workfile from the location shown in the Check In From field and assigns the workfile a sequential revision number.
- Retains a read-only copy of the workfile.
- Does not delete the workfile or keep the revision locked after checking in the workfile.
- Checks in only the files of the selected project and does not include the files of the project's subprojects.
- Prompts you if the workfile is unchanged.
- Retains the promotion group currently assigned to the revision, if a promotion model is in effect.
- Does not assign a version label or create a branch.

Automatically Dismissing the Results Dialog Box

The Results dialog box appears after many tasks you perform, such as adding workfiles, checking in workfiles, and checking out revisions. The Results dialog box either verifies that the action was successful or, if the action failed, provides an error message. By default, you must click Close

to dismiss the Results dialog box, as shown below. However, to speed your work, you can automatically dismiss the Results dialog box when an action is successful, so that you don't have to click Close.



To automatically dismiss the Results dialog box, select the **Automatically dismiss result dialogs when action is successful** check box on the Dialog Behavior tab of the Options dialog box.

For more information about setting dialog box options, refer to the *Serena ChangeMan Version Manager User's Guide*.

Project Databases

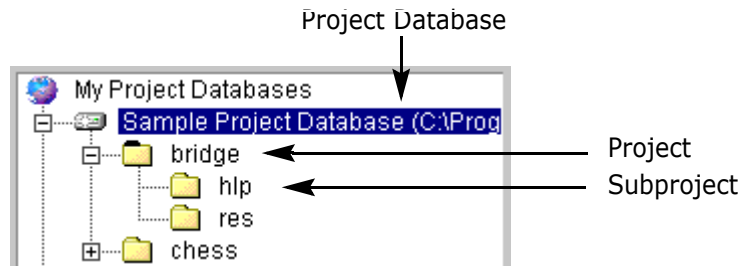
A project database is a hierarchical representation of a group of projects, subprojects, and versioned files. A project database is not a relational database; instead, a project database stores the configuration settings for an entire collection of projects, subprojects, and versioned files.

Project database structure on an operating system

On your operating or file system, a project database is a collection of project files, a pvcuser directory, project directories, a lib directory, and possibly an archives and a work directory. You can change the default locations of the archive and work directories when you create the project database.

Project database structure within the desktop client

From within Version Manager, a project database contains projects and subprojects, as shown below. They also contain versioned files, which appear in the File pane (not shown).

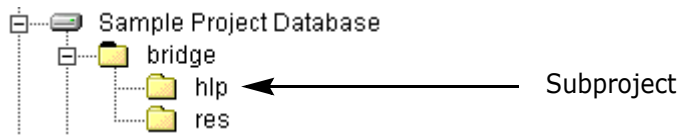


How users interact with projects depends on how the project database is set up:

- The configuration settings of a project database are inherited by the projects within it, but can also be overridden by a project's configuration file if the administrator has not disallowed this behavior in the project database.
- The access control database defined for the project database is inherited by the projects and identifies the users who are authorized to perform actions on the project database and identifies the actions each user can perform. An access control database can be created for individual projects and will override the access control database of the project database.
- The workspace set on a project database defines the workfile location assigned to each project and versioned file.
- The tool bar configuration file defined for the project database defines the custom tools and functions available in the custom tool bar.

Subprojects

Subprojects are projects that are nested within other projects.



Use subprojects to organize your versioned files just as you organize your workfiles on an operating or file system. When you add workfiles, Version Manager automatically creates subprojects to match the subdirectories of your workfile location. Alternatively, you can create subprojects and organize your versioned files to reflect some other organizational structure.



Explore It

- 1 Expand the sample project database.
- 2 Expand the chess project. The chess project contains two subprojects, client and server. Both of these subprojects contain

additional subprojects, which have been nested to reflect a client/server application work structure.

Workspaces

A *workspace* is a collection of work settings defined for a project database. Only one workspace can be set on a project database by a user at any given time, and this workspace defines the work settings for all of the projects, subprojects, and versioned files within the project database.

Work settings include:

- The workfile locations defined for the project database and its projects, subprojects, and versioned files.
- The default version, which is the revision Version Manager will automatically operate on when you don't specify a revision number, version label, or promotion group.
- The base version and branch version used to facilitate automatic branching.
- The default promotion group, which is valid only if a promotion model is in effect. A default promotion group is a lowest-level promotion group of a promotion model. By default, Version Manager associates the default promotion group you specify with revisions when checking out revisions, locking revisions, and adding workfiles. By defining a default promotion group, you eliminate the need for a user to specify which lowest-level promotion group to use for these actions.

Why use workspaces?

Workspaces provide an effective way of managing work environments when multiple functional groups share a centrally located project database.

Typically, an administrator defines several workspaces, such as QA, DEV, and Production, for a project database if the project database is shared between multiple functional groups. Each of these workspaces would define different work settings. For instance, users in the QA group would have workfile locations defined within the K:\QA\Checkers location, whereas users in the Dev group might have workfile locations defined within the S:\Dev\Checkers location. Once these workspaces are defined, users can select the appropriate predefined workspace to use

the workfile locations, default versions, base versions, and branch versions that are appropriate for their functional group.



Explore It

- 1 Select the sample project database.
- 2 Select File | Set Workspace.
- 3 Select Dev and click **OK**.

Notice how the path displayed in the Workfile Location field of the header bar changes to the Development workfile location: SampleDb\work\dev. The Dev workspace name also appears in the status bar.

Adding Workfiles

A *workfile* is a source file located on your operating system, from which you create a versioned file. *Versioned files* are files you place under version control. You can now add an entire directory of workfiles, create the versioned files, create the projects, and create the archives in one easy step. Version Manager automates the process and creates archive directories, using the existing structure of the workfile directories. When you add a workfile, you are actually checking in the initial revision of the file.



Explore It

- 1 Right-click the chess project.
- 2 Select Add Workfiles.
- 3 In the Add Workfiles dialog box, use the Browse button to locate the SampleDB\work\bridge directory and click **OK**.
- 4 In the Description text box, enter my files.
- 5 Select the **Use description for all** check box, and click **OK**. Version Manager creates the Bridge project, adds the workfiles, creates the versioned files, and creates the archives.

Getting and Viewing Files

You can get and view a read-only copy of a file without checking it out of an archive. When you get a revision, Version Manager leaves the revision in the state that it is in (locked or unlocked) and creates a read-only workfile in the location currently set as the workfile location.

Viewing a revision is basically the same as Getting a revision: it creates a read-only copy of the default revision. However, when you view a revision, Version Manager:

- Copies the workfile into a temporary directory. On Windows, the temp directory is defined by the TEMP environment variable. Version Manager creates a /pvcs directory in your temp directory the first time you view a file (for example, /temp/pvcs). On UNIX, this is defined by the pvcsvmux script, which sets it to /tmp/pvcs.
- Launches the application associated with the file type and opens the file. The editor Version Manager uses to display the file is either defined by the default Windows associations or by entering an editor location in the View | Options dialog box.

Because Version Manager does not lock the file or copy the file to the workfile location, you do not need to worry about obstructing other users' access to the file while you view it.



Explore It

- 1 Select the sample project database.
- 2 Expand the Chess project.
- 3 Highlight the server subproject.
- 4 In the File pane, double-click the server.bat file.
- 5 Select View and click **OK**.
- 6 In the Get File dialog box, notice that the path displayed in the **Copy To** field is a combination of the temp directory defined for your system and a /pvcs directory, which Version Manager automatically creates. Click **OK**. The file opens in a text editor.

Moving Projects and Versioned Files

If you need to reorganize your work, you can move projects and versioned files to new locations within the same project database by dragging and dropping the projects and versioned files to the new destinations. You can also move items by selecting the items and then selecting Edit | Move.

What happens when you move a project?

When you move a project, the project's workspace settings are retained if the workspace settings *are not* inherited from the project database. If you haven't changed the workspace settings, and the settings *are* inherited from the project database, the workspace settings of the project you move will be replaced by the workspace settings of the destination project.



Explore It

- 1 Expand the sample project database.
 - a Expand the Bridge project.
 - b Drag the hlp project over the res project and drop it.
 - c At the prompt, click Yes. The hlp project is moved beneath the res project.

Copying Projects and Files

Drag and drop copying

You can copy an entire project and its contents or selected versioned files by dragging the item from one project database and dropping it into a second project database or project. You can also copy a project or versioned file by selecting Edit | Copy.

When you copy a project, workspace settings are not retained. The project assumes the workspace settings defined by the project database to which it was copied.

Merge Tool

Supports n -way merging

The Version Manager desktop client provides a powerful difference and merge tool that enables you to perform n -way merges on Windows

platforms and two-way merges on UNIX platforms. On Windows, there is no limit to the number of files you can merge.

There are many options you can customize for both the difference and merge functions, including:

- Whether or not case is ignored
- Which colors denote differences and conflicts
- Which font styles to use
- Whether or not to ignore blank spaces and tabs
- Whether or not to use line numbers

Many of these options, including file selection, can be saved in a configuration file for later use.

Locating Archives

In Version Manager you define the archive location when you first create a project database. By default, Version Manager automatically creates the archive location using a path relative to the project database location. However, you can also modify this path to use a different location.

Project Information Locations

On an operating or file system, the project database location contains information about the project database, such as configuration options and user information. These files are stored in directories that are created by Version Manager in the locations specified in the Create Project Database dialog box. The directories include:

- An *archives* directory.
- A *work* directory.
- A *pvcuser* directory, which is automatically created within the project database location.
- A *lib* directory, which is automatically created within the project database location.

- Several Version Manager project database files that identify the location as a project database location. These data files are stored at the root of the project database directory.

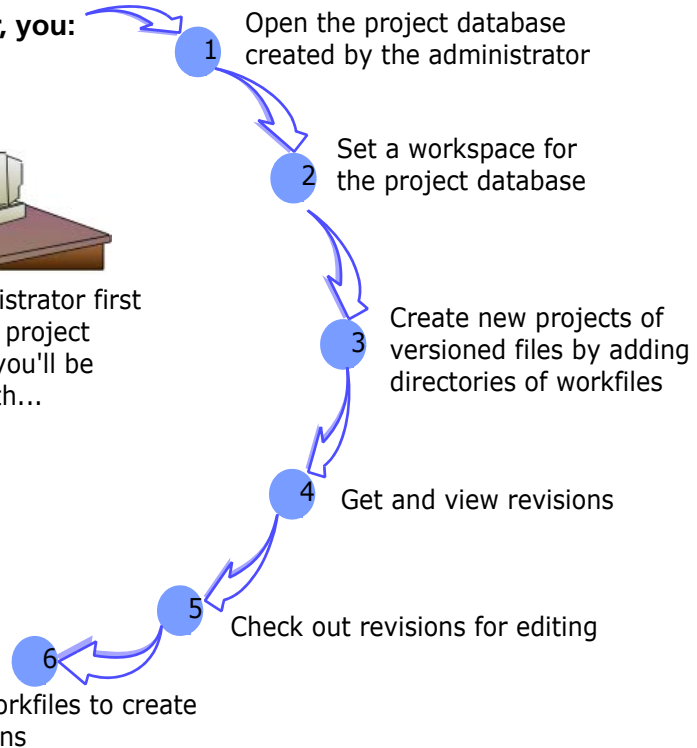
User Workflow for the Desktop Client

The most basic tasks a typical user performs using the Version Manager desktop client are shown in the following graphic. The numbered exercises in the following sections follow this workflow.

As the user, you:



Your administrator first sets up the project databases you'll be working with...



1

Opening a Project Database

Objective: To open a project database using the File menu.

Scenario: Although your administrator already set up a project database for several sample game applications, you must add a project for the new Checkers project you've been assigned to work on. Before you can do this, you must open the project database.

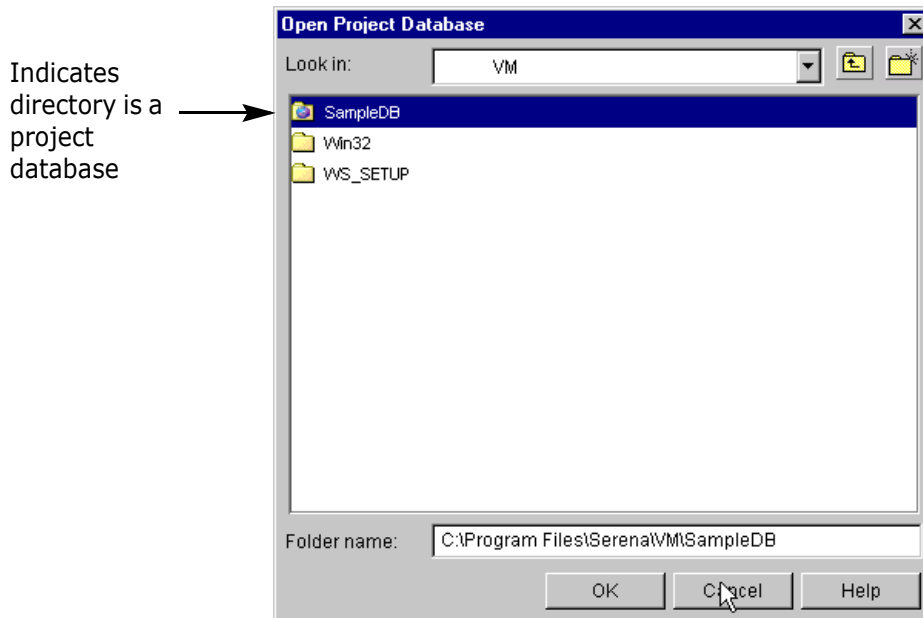
NOTE If you already opened the sample project database from the Welcome to Serena ChangeMan Version Manager dialog box, you'll need to close it first before completing the rest of this exercise.

To close a project database:

- 1 If the sample project database is already open, select it in the Project pane.
- 2 Select File | Close Project Database. The sample project database closes, and it is removed from the Project pane.

To open the sample project database:

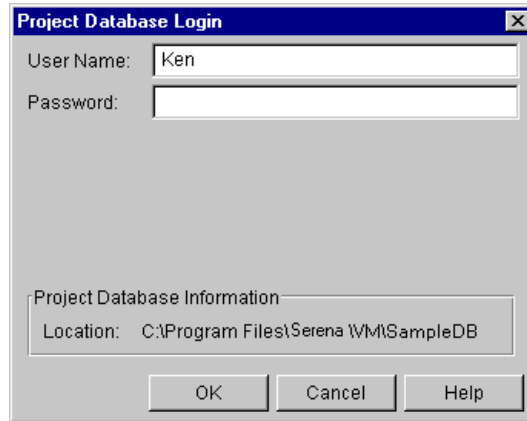
- 1 Select File | Open Project Database. The Open Project Database dialog appears..



- 2 Select the location of the sample project database, which is relative to the Version Manager installation directory. Unless you modified the default installation directory, the sample project database is installed to one of the following locations:
 - **On UNIX:** /usr/serena/vm/common/sampleddb

- **On Windows:** `VM_Install\vm\common\sampledb` where `VM_Install` is the location in which you installed Version Manager.

- 3 Click **OK**. If this is the first time you have opened the sample project database, the Login dialog box appears.



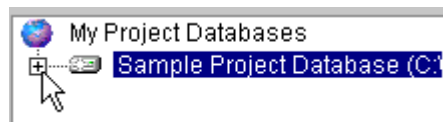
- 4 Using the information your administrator supplied you, enter Ken as the user name. The administrator did not assign a password, so you do not need to enter a value in the Password field.
- 5 Click **OK**. Version Manager logs you in to the sample project database, which now appears in the Project pane.

Now you have learned:

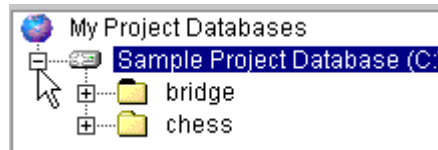
- How to close a project database.
- How to open the sample project database.
- How to log in to a project database that has been configured to use the Login Dialog login source.

Some notes about project databases...

- Expand the view of the project database by clicking the plus sign next to the project database name.



- Collapse the view of the project database by clicking the minus sign next to the project database name.



For more information

Refer to "Working with Project Databases" in the *Serena ChangeMan Version Manager User's Guide* or "Setting Up Version Manager Using the Desktop Client" in the *Serena ChangeMan Version Manager's Administrator's Guide*.

2 Setting a Workspace

Objective: To set a workspace and define a default workspace.

A *workspace* is a collection of work settings that enable you to customize your environment according to your work preferences. A workspace stores information about where your workfiles are located, how you select revisions (using a revision number, version label, or promotion group), and how or if you work with automatic branching.

A *default workspace* is the workspace that Version Manager automatically sets when you open the project database.

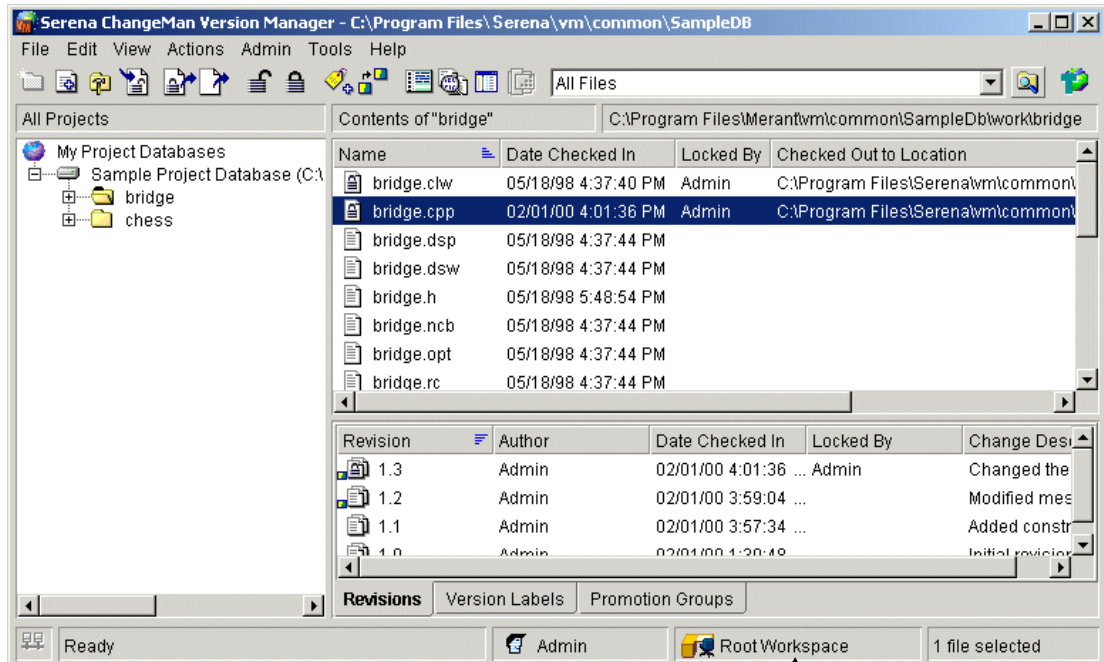
Scenario: Your administrator set up five workspaces for the sample project database:

Workspace	Workfile Location
Root	C:\Program Files\Serena\vm\common\SampleDB\work\
QA	C:\Program Files\Serena\vm\common\SampleDB\work\qa
Dev	C:\Program Files\Serena\vm\common\SampleDB\work\dev
Production	C:\Program Files\Serena\vm\common\SampleDB\work\prod
UNIX	/usr/serena/vm/common/sampledB/work

Because your role is that of a Developer, you will use the Dev workspace on the sample project database.

To set the Dev workspace:

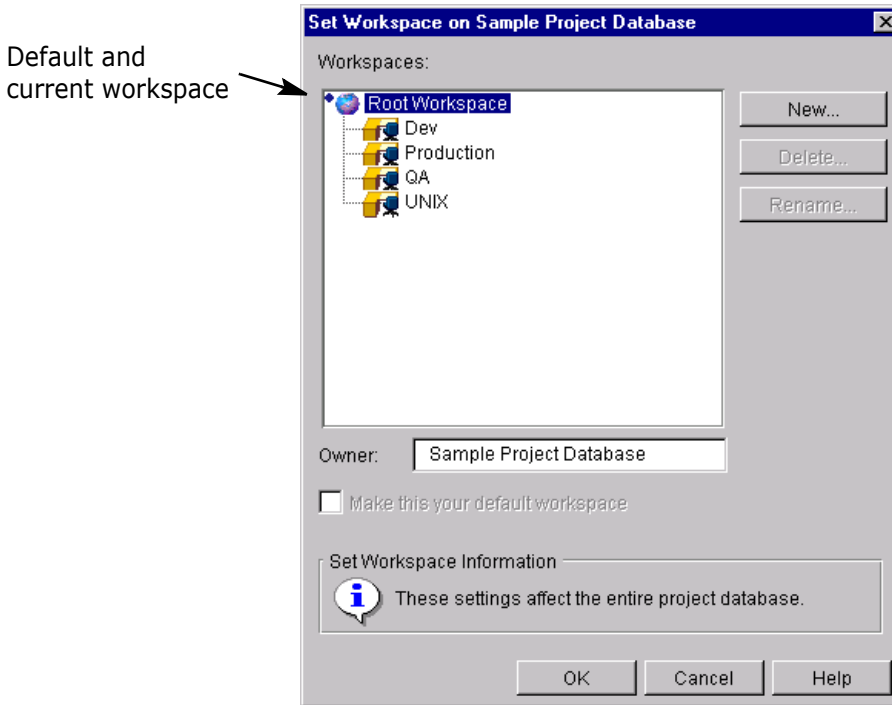
- 1 You're not sure which workspace is currently set on the project database, so you select the sample project database and then check the status bar to see which workspace is current, as shown in the following graphic.



Name of current workspace

You see that the Root Workspace is currently set, so you need to change to the Dev workspace.

- 2 Click the workspace name in the status bar or select File | Set Workspace. The Set Workspace dialog box appears, showing Root Workspace as the default and current workspace.



The default workspace is identified by a diamond. The current workspace is highlighted.

- 3 Select Dev and then select the **Make this your default workspace** check box.

Version Manager automatically sets the workspace defined as the default workspace whenever you open a project database.

- 4 Click **OK**.

Version Manager associates the Dev workspace with your user information for the sample project database. Whenever you open the sample project database, Version Manager automatically sets this Dev workspace. However, when other users open this same project database, Version Manager sets the workspace that they defined as the default workspace, which might not be the same default workspace you defined.

Now you have learned:

- How to identify the current workspace.
- How to set a workspace.
- How to define a default workspace so that Version Manager automatically sets the workspace each time you open the project database.

Some notes about workspaces...

- To verify which workspace is set, look at the status bar. When you select a project database, the name of the current workspace appears in the status bar to the right of the current user name. This workspace applies to all projects and subprojects within the project database. Each project database has a different workspace.
- To verify a workfile location set for a project database, project, or subproject, select the item and look in the Workfile Location field above the File pane.
- You can modify the settings of the current workspace by changing the workfile location defined for a versioned file, project, subproject, or the project database. To change a workfile location, select the item and select File | Set Workfile Location.
- To verify or change the workspace settings defined for a project database, project, subproject, or versioned file, select the item and select File | Properties. The Workspace Settings tab contains the values of the workspace settings.

**For more information**

Refer to "Using Workspaces" in the *Serena ChangeMan Version Manager User's Guide* or "Managing Your Environment" in the *Serena ChangeMan Version Manager Administrator's Guide*.

3

Adding Workfiles

Objective: To add an entire directory of workfiles and automatically create a project, the versioned files, and the archives. When you add workfiles, you check in the initial revisions of the file.

For every workfile you add, Version Manager creates a versioned file and an archive. The versioned file is created in the project selected in the

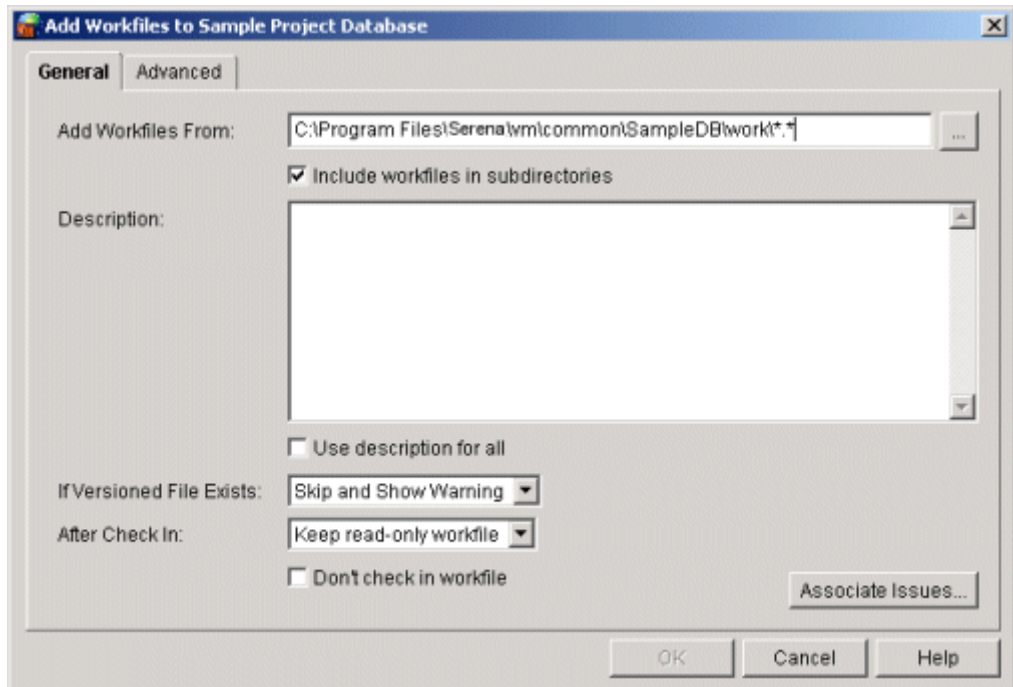
window when you added the workfile. The archive is created on your operating or file system in the archive location defined for the project.

When you add an entire directory (including subdirectories) of workfiles, Version Manager creates a subproject for each subdirectory of workfiles. Version Manager also creates a subdirectory for the archives in the archive location defined for the project. The subproject and the archive directory on your operating or file system share the same name.

Scenario: While working on the Checkers application, you've created numerous files. Your Project Leader has asked you to place these files under version control and assign each file a description identifying it as a component of the Checkers application. To place the files under version control, you must create a project and add the workfiles to it. You can do this in one step by adding the entire directory of Checkers workfiles.

To add the Checkers workfiles:

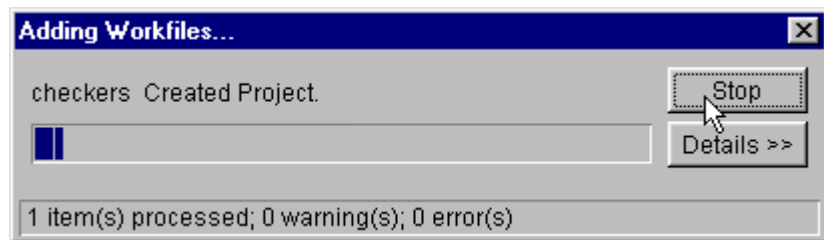
- 1 In the Project pane, select the sample project database.
- 2 Select File | Add Workfiles. The Add Workfiles dialog box appears. By default, the location displayed in this dialog box is the location defined as the workfile location for the project database.



- 3 Do the following:
 - In the **Add Workfiles From:** edit box, navigate to one of the following locations, which contain all of the workfiles you need to place under version control:
 - **On Unix:**
/usr/serena/vm/common/sampled/ work/dev/checkers
 - **On Windows:**
VM_Install\vm\common\sampled\work\dev\checkers
where VM_Install is the location in which you installed Version Manager.

- Verify that *.* (Windows) or * (UNIX) appears at the end of the path.
- 4 The Project Leader asked you to assign each file a description identifying it as a component of the Checkers application, so you need to add a description to each archive. To do this, you:
- Enter Checkers Project in the **Description** field.
 - Select the **Use description for all** check box.
- 5 Because the folder containing the Checkers files contains two subdirectories—Client and Server—you retain the remaining default options, including the option to include workfiles in subdirectories. This last option instructs Version Manager to automatically create subprojects for any subdirectories within the selected directory of workfiles and automatically add the workfiles in the subdirectories.

When you click **OK**, Version Manager adds the files, and the progress dialog box appears.



While the progress is monitored, Version Manager:

- Creates the Checkers project and adds it to the sample project database.
- Creates two subprojects—Client and Server—to match the subdirectories in the Checkers workfile directory.
- Adds a versioned file to the new Checkers project for every workfile in the Checkers directory and subdirectories. Each versioned file has one revision (the initial revision).
- Creates an archive for each versioned file, using the default archive suffix: -arc. The archives are created in the archive location defined for the sample project database (sampledb/archives or sampledb\archives). Within this archive location, Version Manager creates a new checkers directory, and stores

the archives using the same hierarchy used in the checkers workfile directory.

- Assigns the existing location of the Checkers workfiles as the workfile location for the new Checkers project.
- Assigns the description *Checkers Project* to each new archive.
- Assigns the default revision description *Initial revision* to the first revision of each versioned file.

Now you have learned:

- How to add workfiles to a project database for the first time.
- Where Version Manager stores the archives for the versioned files.
- How to create a project structure that replicates your workfile structure, by including the workfiles in subdirectories.
- How to enter descriptions for archives.

Some notes about adding workfiles...

- To view information about the revisions that were created, select View | Show Revisions, if the Revision pane is not already open. Expand a project in the Project pane and select a versioned file in the File pane. Information about the revisions within the selected versioned file displays in the Revision pane.
- To modify the default options that pertain to workfile actions, such as what happens when you check in a workfile, select View | Options and change the values in the Check In/Out Options group box.



For more information

Refer to "Adding Workfiles" in the *Serena ChangeMan Version Manager User's Guide* or "Setting Up Version Manager Using the Desktop Client" in the *Serena ChangeMan Version Manager Administrator's Guide*.

4

Getting and Viewing Revisions

Objective: To get a revision and view its contents without locking or checking out the revision.

When you get a revision, Version Manager leaves the revision in the state that it is in (locked or unlocked) and creates a read-only workfile in the location currently set as the workfile location.

Viewing a revision provides the same basic function as the Get function: it creates a read-only copy of the default revision. By viewing the file, you can decide whether or not you want to check out the revision to edit it. However, when you view a revision, Version Manager:

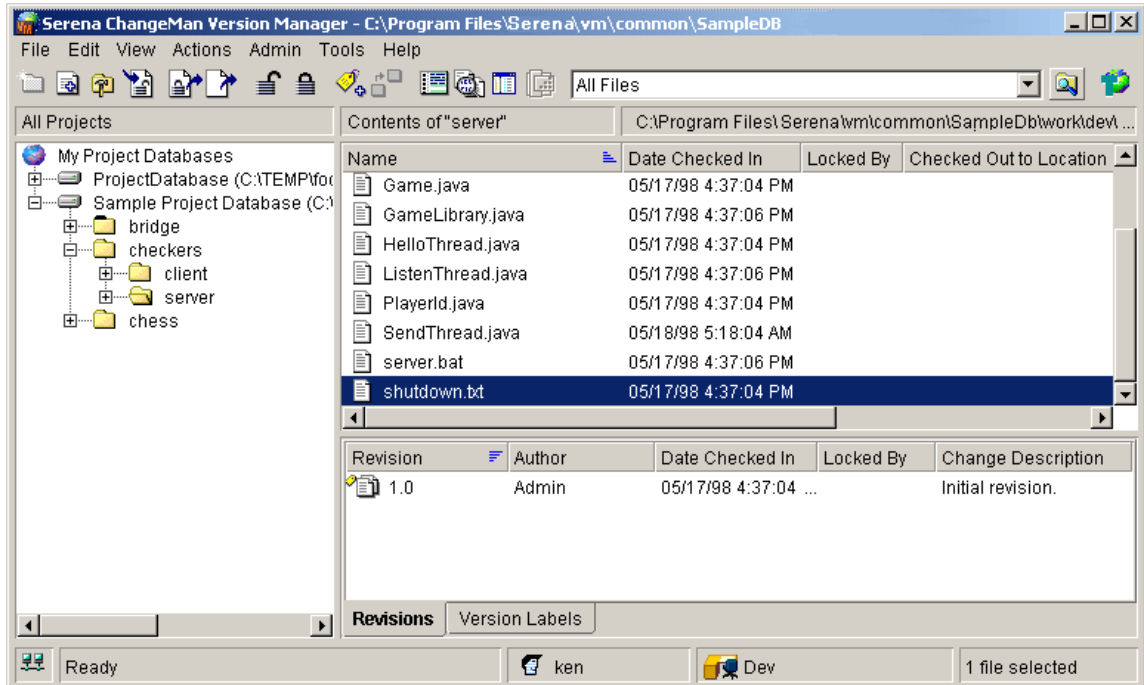
- Copies the workfile into a temporary directory. On Windows, the temp directory is defined by the TEMP environmental variable. Version Manager creates a /pvcs directory in your temp directory the first time you view a file (for example, /temp/pvcs). On UNIX, this is defined by the pvcsvmux script, which sets it to /tmp/pvcs.
- Launches the application associated with the file type and opens the file. The editor Version Manager uses to display the file is either defined by the default Windows associations or by entering an editor location in the View | Options dialog box.

Because Version Manager does not lock the file or copy the file to the workfile location, you do not need to worry about obstructing other users' access to the file while you view it.

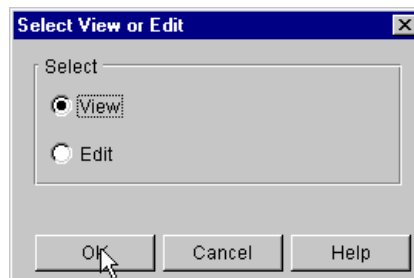
Scenario: The first issue you need to address in the Checkers application is a problem with the server. Another Developer mentioned that he entered some information about the problem in the shutdown.txt file, so you need to get this file and read it before you make any changes to the code. Since the shutdown.txt workfile was in the Server subdirectory on your operating system, you know that in Version Manager the shutdown.txt versioned file exists in the Server subproject.

To get the latest revision of shutdown.txt:

- 1 Expand the Checkers project and select the Server subproject. The shutdown.txt versioned file is listed in the File pane, as shown below.



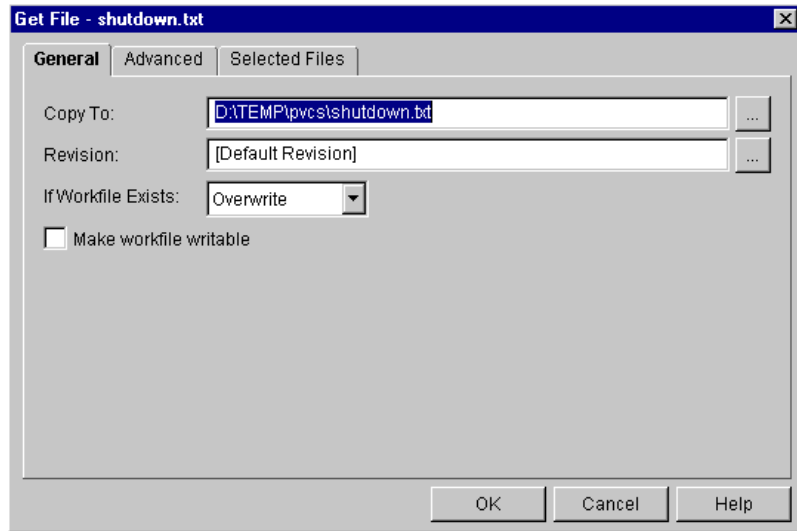
- 2 Double-click the shutdown.txt file. The View or Edit prompt appears.





NOTE The behavior associated with double-clicking may be changed by selecting View | Options and accessing the Applications dialog box. The Default Double-Click Action option may be set to Ask, View File or Edit file. The default setting is Ask.

- 3 Select View and click **OK**. The Get File dialog box appears.



Note that the path defined in the **Copy To** field is a combination of the temp directory defined for your system and a pvc directory, which Version Manager automatically creates.

- 4 Click **OK** without changing the value of any other field. This retains the default settings and Version Manager does the following:
 - Retrieves a read-only copy of the revision specified in the **Revision** field and copies it to the pvc directory beneath the temp directory defined for your system.
 - Opens the read-only workfile using the editor associated with text files (or the editor defined using View | Options).

You can now review the contents of the file.

- 5 After reviewing the information, you realize you'll need to review a different file before you can understand the problem, so you exit the text editor to close the file.

Now you have learned:

- How to retrieve a read-only copy of a revision for viewing.
- Where Version Manager creates the read-only copy of the revision.

Some notes about getting revisions...

- By default, when you get a revision, Version Manager retrieves a temporary, read-only copy of the file, which is created in a pvcs directory beneath the temp directory defined for your system.
- If you plan on editing a file, you should check out the file with a lock instead of just getting it.
- You can get a file by selecting Actions | Get, but Version Manager only launches the file in an editor if you view or edit the file (double-click the versioned file in the File pane or select View or Edit from the Edit menu or context menu).

**For more information**

Refer to "Getting Revisions" in the *Serena ChangeMan Version Manager User's Guide*.

5

Checking Out and Editing Revisions

Objective: To check out and automatically open a revision for editing in the appropriate editor.

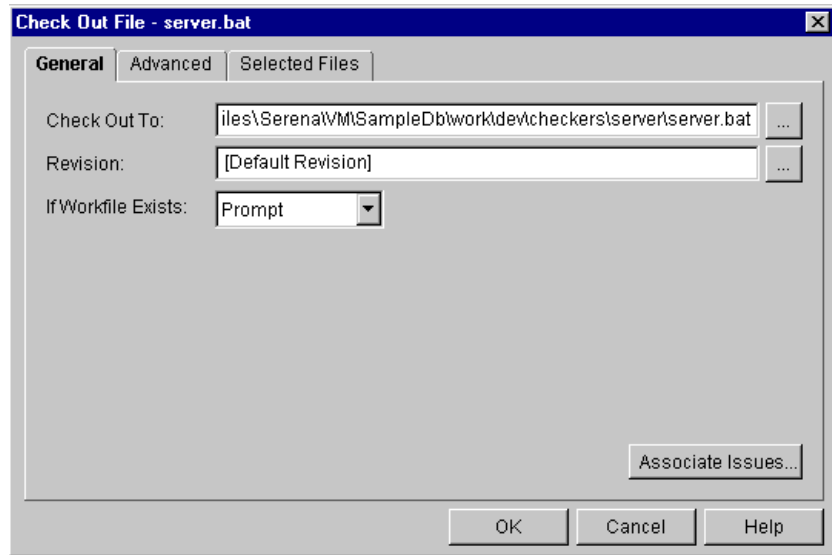
When you check out a revision, Version Manager places a lock on the revision using your user ID. Typically, no one else can check in changes until you remove the lock by checking in your changes or unlocking the revision. The only exception to this rule is when your administrator configures the project so that users can place multiple locks on revisions for branch development.

Scenario: Because the shutdown.txt file didn't contain any useful information, you decide to check out a batch file to see if there is a problem with the server commands it contains. Because this is also a server file, you're pretty sure this file is also stored in the Server subproject.

To check out and edit the batch file:

- 1 If it isn't already expanded, expand the Checkers project and select the Server subproject. In the File pane, you see the server.bat file you need.

- 2 In the File pane, double-click the `server.bat` versioned file.
- 3 At the prompt, select Edit and click **OK**. The Check Out dialog box appears.



- 4 Click **OK** without changing the values of any other fields. The default settings are retained and Version Manager does the following:
 - Retrieves a writable copy of the `server.bat` file and copies it to the path identified in the **Check Out To** field.
 - Places a lock on the revision with your user name.
 - Opens a writable copy of `server.bat` in a text editor, enabling you to edit the contents of the file.
- 5 You see that there are several references to "chess" in the file, which need to be changed to "checkers," so you make the changes and save the file.

Now you have learned:

- How to check out a file with a lock.
- How to open the file in an editor.

Some notes about checking out a revision...

- By default, when you check out a revision, Version Manager locks the revision and provides you with a writable copy of the workfile.
- You can check out a file by selecting Actions | Check Out, but Version Manager only launches the file in an editor if you view or edit the file (double-click the versioned file in the File pane or select View or Edit from the Edit menu or context menu).

**For more information**

Refer to "Checking Out Revisions" in the *Serena ChangeMan Version Manager User's Guide*.

6

Checking In Workfiles

Objective: To check in a workfile that contains changes.

When you check in a workfile, Version Manager stores it in an archive and creates a revision. You cannot check in a workfile unless you have already locked the revision.

Scenario: Because you fixed the problem in `server.bat`, you want to archive your changes. To do this, you'll need to check the workfile into Version Manager.

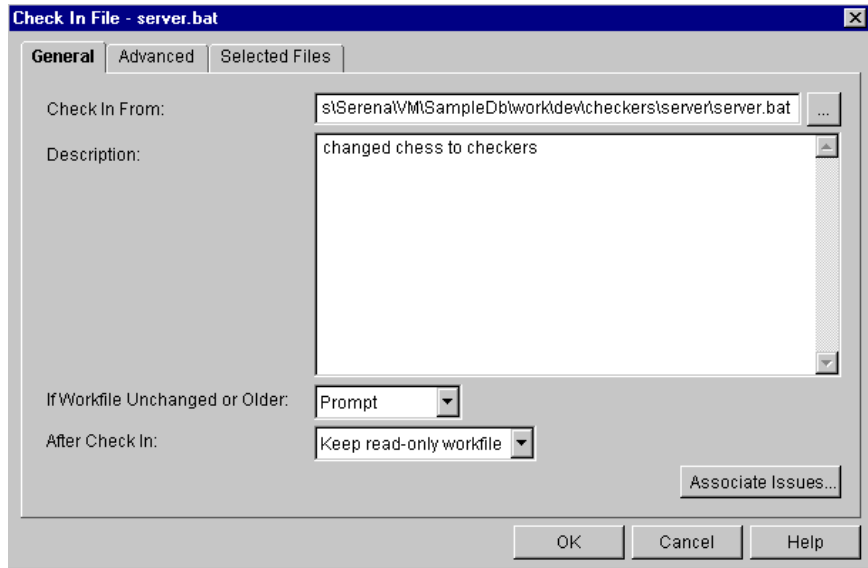
To check in server.bat:

- 1 If it isn't already open, expand the Checkers project and select the Server subproject.
- 2 Select the `server.bat` versioned file, which now shows a lock icon, as shown in the graphic below.

 SendThread.java	05/18/98 5:18:04 AM
 server.bat	05/17/98 4:37:06 PM ken
 shutdown.txt	05/17/98 4:37:04 PM

- 3 Right-click the versioned file and select Check In. The Check In dialog box appears.

- 4 You decide to add information about the change you made, so you enter `changed chess to checkers` in the **Description** field.



- 5 Click **OK** without changing the values of any other fields. The default settings are retained and Version Manager does the following:
- Checks in `server.bat` from the location shown in the **Check In From** field.
 - Retains a read-only copy of the `server.bat` workfile.
 - Does not delete the workfile or retain a lock on the revision.
 - Assigns the description to the revision.

Now you have learned:

- How to check in a file and create a new revision of the versioned file.
- How to enter a description for the changes contained in the new revision.

Some notes about checking in workfiles...

- You can check in entire directories of workfiles at once, including workfiles in subdirectories.
- You can perform more advanced check in actions, such as forcing a branch, using the Advanced tab of the Check In dialog box.



For more information

Refer to "Checking In Items" in the *Serena ChangeMan Version Manager User's Guide*.

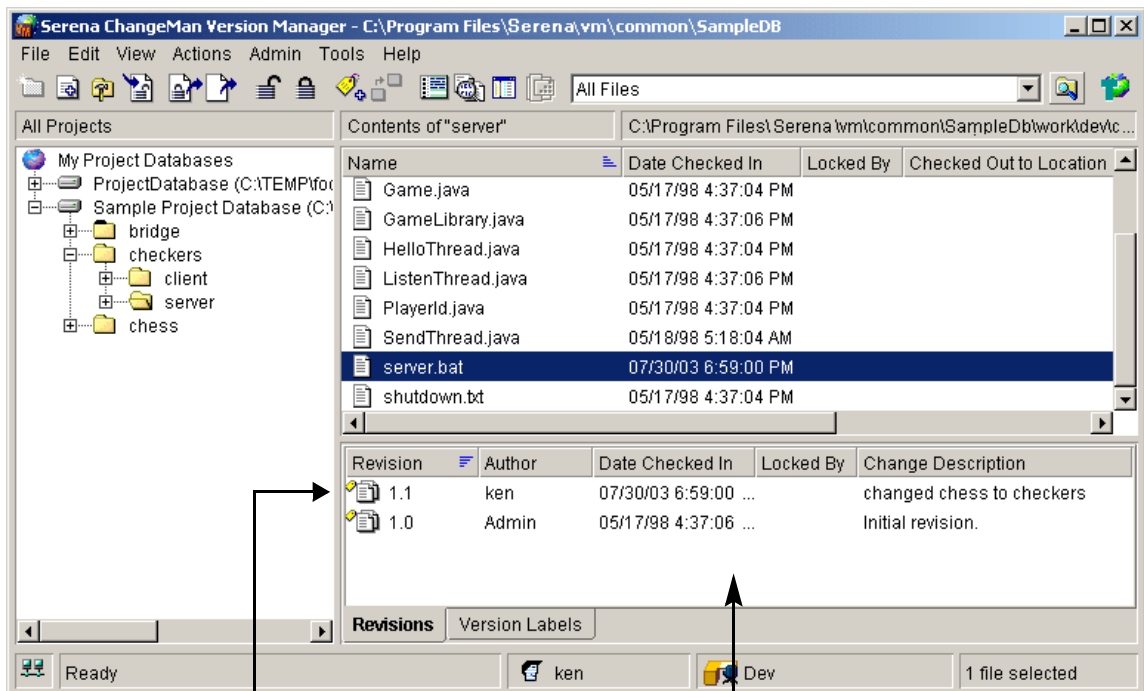
Reviewing Revisions

Objective: To verify that the versioned file contains a new revision by reviewing the contents of the Revision pane.

Scenario: Now that you checked in a workfile, you want to review the changes that were saved to the archive.

To review your changes:

- 1 If it isn't already open, expand the Checkers project and select the Server subproject.
- 2 If the Revision pane isn't already open in the lower-right corner of the Version Manager desktop, select View | Show Revisions. The Revision pane appears, as shown in the next graphic.



New revision
you added

Revision pane

- 3 Select the `server.bat` versioned file. The revision you added to the archive is shown in the pane, along with the change description you entered.

Now you have learned:

How to verify revision information by reviewing the contents of the Revision pane.

Working with the Command-Line Interface

In this section, you will work with the sample project database files using the command-line interface. The files you will work with are the same files provided in the sample project database, described in ["About the Sample Project Database and Scenarios" on page 46](#). However, because the command-line interface does not recognize projects or project databases, the goal of these exercises is to demonstrate how you can use the command-line interface to modify files contained within a project database that was created using the desktop client interface.

NOTE If you have already completed the section, ["Working with the Desktop Client" on page 46](#), you must delete the contents of the `sampledb\archives\checkers\server` directory before continuing with the following procedures.

About the Sample Project Files and Scenarios

By default, when you install Version Manager, the sample project database is installed to the following locations:

- **On UNIX:** `/usr/serena/vm/common/sampledb`
- **On Windows:** `VM_Install\vm\common\sampledb`
where `VM_Install` is the location in which you installed Version Manager, such as `d:\program files\serena`

If you modify the default installation location, the sample project database is installed in a location relative to the Version Manager installation directory.

At the sample project database location, there are sample files for three games: Chess, Checkers, and Bridge. Only the files in the Chess and Bridge projects have been archived. The Checkers files have not been archived—you will do this yourself in the following exercises. You will also perform some of the basic tasks that a Developer might perform while developing a new application.

While working through these exercises, assume the following:

- You work as a Developer for a large company that designs computer games. Your task is to begin work on a new game: Checkers.
- Your administrator has already set up a project database for the sample games under development using the Version Manager desktop client by doing the following:
 - She created an archive location for the Checkers project.
 - She added HOST to the login sources for the project database, so that you can access the archives from the command-line interface.

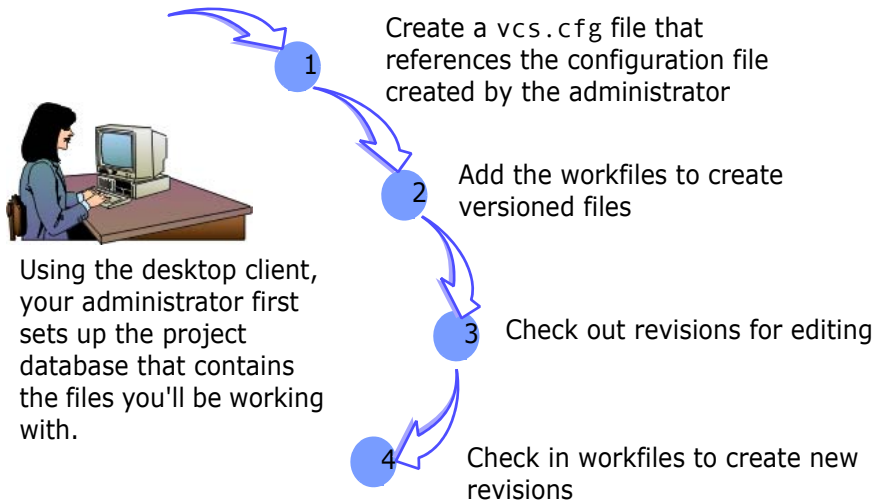
Now you must archive the Checkers files using the command-line interface.

User Workflow for the Command-Line Interface

The most basic tasks a user will perform using the Version Manager command-line interface are shown in the graphic below. Note that this workflow differs considerably from the desktop client workflow shown on page 55 because the command-line interface does not recognize projects or project databases. Instead, when you use this interface, you work

directly with the archives. The numbered exercises in the following sections follow this workflow.

As the user, you:



Using the desktop client, your administrator first sets up the project database that contains the files you'll be working with.

1 Creating a `vcs.cfg` File

Objective: To create a `vcs.cfg` file.

A `vcs.cfg` file is an ASCII text file that contains directives. These directives control how Version Manager commands operate on archives. To use Version Manager from the command line, you must do one of the following:

- Create a `vcs.cfg` file in your workfile directory (the directory from which you check in files and to which you check out files).
- Set a `vcscfg` environment variable that specifies the name and location of the project database's configuration file, as it was defined in the desktop client.

Scenario: Your administrator has already set up a new project database using Version Manager. When she set up the project database, she also created an archive and work directory for a new Checkers application, which you've been assigned to develop.

Because you primarily work from the command prompt, you'd like to check files into and out of archives using the Version Manager command-

line interface. To do this, you first need to create a `vcs.cfg` file and copy it to the appropriate work directory.

To create a `vcs.cfg` file:

- 1 In a text editor, create one of the following ASCII files:

On Windows: enter the following three lines:

```
INCLUDE
    VM_Install\vm\common\sampledb\archives\basecfg.cfg
NoAccessControl
NODELETEWORK
```

where `VM_Install` is the location where you installed Version Manager.

On UNIX: enter the following three lines:

```
INCLUDE /usr/serena/vm/common/sampledb/archives/
    basecfg.cfg
NoAccessControl
NODELETEWORK
```

What it means:

The `INCLUDE` directive specifies where the configuration file for the project database that contains the files you'll be working with is located. To determine this path, start Version Manager and view the Properties of the appropriate project database. Under the Properties tab, the path of the configuration file is listed in the **Configuration File** field.

The configuration file defines the archive location. Since the `vcs.cfg` you just created references the project database configuration file, it does not need to define the archive location because the configuration file already defines the location.



NOTE If there are blank spaces in the path to the configuration file, use quotation marks around the path. For example, if the sample project database is installed to the default location, define the path as:

```
include "C:\Program
Files\Serena\vm\common\sampledb\archives\basecfg.cfg"
```

The `NoAccessControl` directive instructs Version Manager to ignore the access control database defined for the sample project database. This directive can only be used if your administrator has not modified the configuration of the sample project database by disallowing this

directive. If the directive is disallowed, you will not be able to complete the command-line interface tutorial unless the administrator adds your user ID to the access control database associated with the sample project database. Typically, administrators will disallow this directive in actual project databases so that users cannot override access control databases.

For more information about setting up security, refer to the *Serena ChangeMan Version Manager Administrator's Guide*.

The NODELETEWORK directive instructs Version Manager to not delete the workfiles after you check them into the archives. This directive is optional.

- 2 Save the file as `vcs.cfg` and copy it to the Server workfile location, which is located in one of the following directories by default:

- **On UNIX:**

```
/usr/serena/vm/common/sampled/ work/dev/checkers/  
server
```

- **On Windows:**

```
VM_Install\vm\common\sampled\work\dev\checkers\  
server
```

where *VM_Install* is the installation location of Version Manager.

All of the files in this directory will be archived in `\vm\common\sampled\archives\checkers\server`.

- 3 If you will be working with other work directories that map to other archive locations, create additional `vcs.cfg` files for those directories.

Now you have learned:

- How to create a `vcs.cfg` file
- What information to put in the `vcs.cfg` file
- Where to locate the `vcs.cfg` file



For more information

Refer to "Setting Up Version Manager Using the Command-Line Interface" in the *Serena ChangeMan Version Manager Administrator's Guide*.

2 Adding Workfiles

Objective: To add a workfile for the first time, which creates the archive, a versioned file, and the first revision.

Scenario: When you were assigned the Checkers project, you were given some code that another Developer had begun to write. These files exist in the `work/dev/checkers/server` directory. To safeguard these original files, you want to add the workfiles to archives.

To add workfiles:

- 1 Open a command prompt window, and from the command prompt, navigate to the workfile location:

- **On UNIX:**

```
/usr/serena/vm/common/sampled/ work/dev/checkers/
server
```

- **On Windows:**

```
VM_Install\vm\common\sampldb\work\dev\checkers\server
```

where `VM_Install` is the install location of Version Manager.

- 2 Add all of the workfiles to the archive location by issuing one of the following commands:

- **On UNIX:**

```
put /usr/serena/vm/common/sampled/archives/
checkers/server\(*.*\)
```

- **On Windows:**

```
put VM_Install\vm\common\sampldb\archives\checkers\
server(*.*)
```



NOTE If there are blank spaces in the path, use quotation marks around the path. For example, if the sample project database is installed to the default location, define the path as:

```
put "C:\Program Files\Serena\vm\common\sampldb\
archives\checkers\server(*.*)"
```

- 3 At the prompt, enter for the checkers project and press CTRL+Z to assign the description to the first archive.

- 4 At each prompt to use the same description, enter Y and press ENTER.

Version Manager does the following:

- Creates one archive for each workfile and enters *for the checkers project* as the description of each archive.
- Creates the first revision in each archive and enters *initial revision* as the description of each revision.
- Attaches the same archive suffix (-arc) to the new archives that were defined in Version Manager, ensuring access to the archives using either the desktop client or command-line interface.

Now you have learned:

- How to add a workfile for the first time
- How to enter a description for the archive, which is created by Version Manager the first time you add a workfile

Some notes about the command-line interface...

- To access versioned files in the Version Manager desktop client that you added as workfiles from the command-line interface, you must first import the archives in the desktop client. When you import an archive, Version Manager creates the graphical representation of the versioned file in the desktop client and establishes an association between the versioned file and the archive.



For more information

Refer to "Setting Up Version Manager Using the Command-Line Interface" in the *Serena ChangeMan Version Manager Administrator's Guide* or "Put" in the *Serena ChangeMan Version Manager Command-Line Reference Guide*.

3

Checking Out Revisions

Objective: To check out a revision for editing.

When you check out a revision, Version Manager places a lock on the revision with your user ID. Typically, no one else can check in changes until you release the lock by checking in your changes or unlocking the revision. The only exception to this rule is when your administrator enables multiple locking for branch development.

Scenario: To get started on the Checkers project, you need to access the `CheckersServer.html` file, which contains information about previous changes that were made to the Checkers application. You also might need to modify the contents of this file, so you want to lock the revision, too. To do this, you must check out the latest revision of the file with a lock.

To check out `CheckersServer.html`:

1 Navigate to the Checkers workfile location:

- **On UNIX:**

```
/usr/serena/vm/common/sampled/edb/work/dev/checkers/
server
```

- **On Windows:**

```
VM_Install\vm\common\sampled\edb\work\dev\checkers\server
```

where *VM_Install* is the installation location of Version Manager.

2 Enter `get -l CheckersServer.html`

Version Manager retrieves the latest version of the file, locks the revision using your HOST ID, and copies the workfile to the working directory.

Now you have learned:

How to check out a file with a lock.



For more information

Refer to "Get" in the *Serena ChangeMan Version Manager Command-Line Reference Guide*.

4

Checking In Revisions

Objective: To check in a workfile that contains changes.

When you check in a workfile, Version Manager stores the changes in the workfile's archive and creates another revision. Before you check in a workfile, you must have a lock on the revision in Version Manager. Only the person who locked a revision can check in a new version of it, unless your administrator has configured the project to allow multiple locks.

Scenario: Now that you've reviewed and made a few changes to the `CheckersServer.html` file, you'd like to check in your modifications. To do this, you'll need to check the workfile into Version Manager.

To check in CheckersServer.html:

1 Navigate to the Checkers working directory:

■ **On UNIX:**

```
/usr/serena/vm/common/sampled/ work/dev/checkers/  
server
```

■ **On Windows:**

```
VM_Install\vm\common\sampled\work\dev\checkers\server
```

where `VM_Install` is the installation location of Version Manager.

2 Enter `put CheckersServer.html`

Version Manager checks the file into its archive and then releases the lock that was set with your HOST ID. Your changes become the next revision in the archive, which other users can now access. You can import these archives to the Version Manager desktop client, and then you can review the changes you archived. For more information, refer to "[Reviewing Revisions](#)" on page 73.

Now you have learned:

How to check in a file.



For more information

Refer to "Put" in the *Serena ChangeMan Version Manager Command-Line Reference Guide*.

Chapter 3

Strategies For Working With Version Manager

Introduction	84
Ways to Use the Desktop Client	84
Working with Version Manager 5.3/6.0 Project Roots	89
Using the Command-Line Interface	90
Using the Project Command-Line Interface (PCLI)	90
Using the Version Manager IDE Client	91
Using the Version Manager Web Client	93
Using WebDAV Server	93
Using Meritage	93

Introduction

This chapter introduces strategies for using Serena ChangeMan Version Manager to best meet the demands of your work environment.

Whether you want to work from a remote location, automate processes with scripts, or perform source control actions from within a development environment, Version Manager has the features you need.

Ways to Use the Desktop Client

For both administrators and users, the Version Manager desktop client provides the most comprehensive functionality.

Reviewing Properties

You can review the properties (attributes) of any item in the desktop client, including a project database, a project, a subproject, or a versioned file. The types of properties you can review depends upon the selected item.

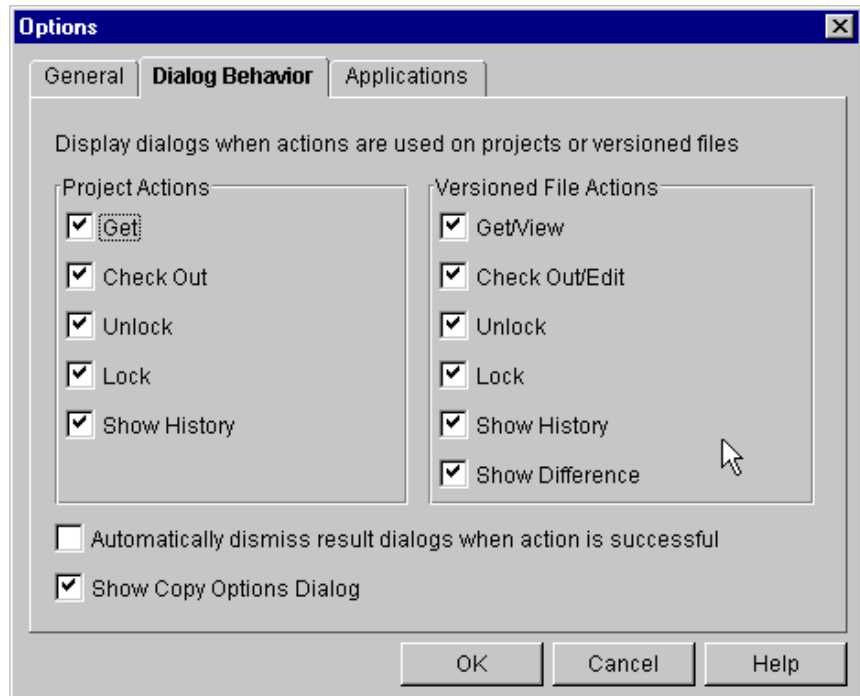
To review the properties of an item, right-click the item and select Properties. For more information about properties, refer to the *Serena ChangeMan Version Manager User's Guide*.



NOTE You can also review properties from a Version 5.3/6.0 folder.

Hiding Dialog Boxes

To turn off one or more dialog boxes, select View | Options and select the Dialog Behavior tab, which is shown below.

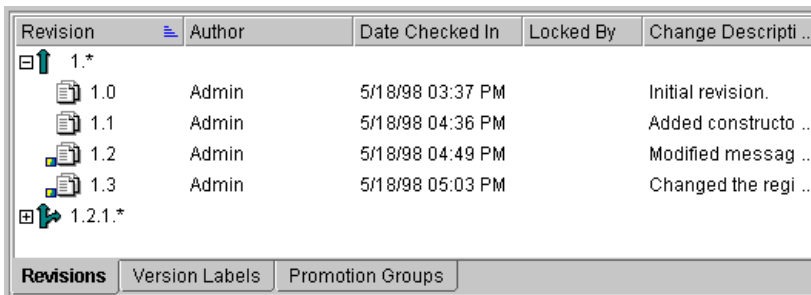


For more information about setting dialog box options, refer to the *Serena ChangeMan Version Manager User's Guide*.

Using the Revision Pane to View Change History

The Revision pane provides quick access to the complete history of a versioned file. For each revision of a versioned file, the Revision pane shows the author of the revision, the date it was last checked in, the users who hold a lock on it, the change description entered for it, the version labels assigned to it (if any), the promotion group assigned to it (if any), and the branch it belongs to if a branch exists.

The Revision pane is shown below.



Revision	Author	Date Checked In	Locked By	Change Descripti ...
1.*				
1.0	Admin	5/18/98 03:37 PM		Initial revision.
1.1	Admin	5/18/98 04:36 PM		Added constructo ...
1.2	Admin	5/18/98 04:49 PM		Modified messag ...
1.3	Admin	5/18/98 05:03 PM		Changed the regi ...
1.2.1.*				

To view the Revision pane, select View | Show Revisions.

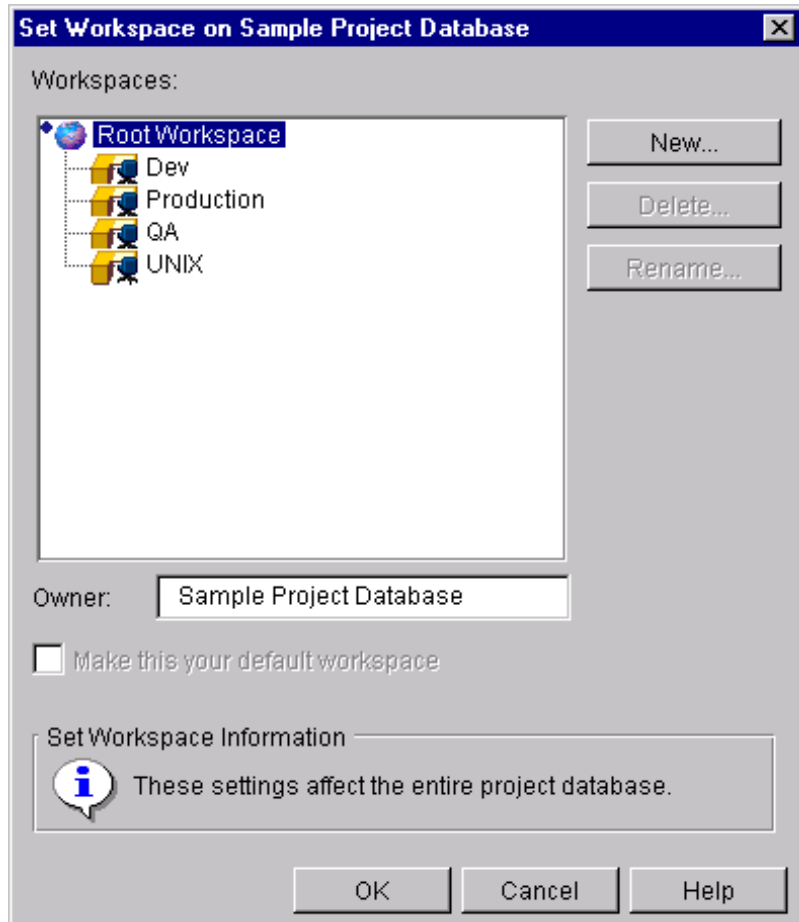
For more information about the Revision pane, refer to the *Serena ChangeMan Version Manager User's Guide*.

Using Workspaces to Change Drives

Customize work
settings

When working in a project database shared by multiple users, you can use workspaces to customize the work environment for each user or each group of users. For instance, if everyone in your organization uses the same archives, but the Quality Assurance engineers work on one drive, such as *Z:* or */home/build/work*, and the development engineers work on another drive, such as *Y:* or */home/test/work*, you can set up a separate workspace for each group.

For more information about workspaces, refer to the *Serena ChangeMan Version Manager User's Guide*.

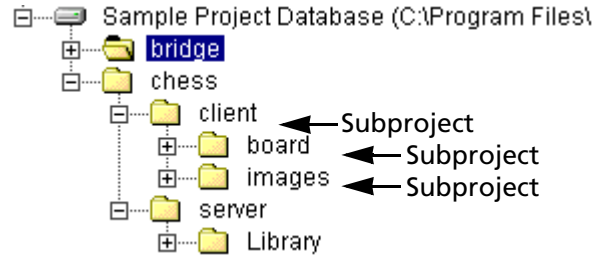


Using Subprojects to Organize Files

Organize versioned files like workfile directories

Using subprojects, you can set up a project database in Version Manager that matches the actual working directories on your operating system.

The sample project database, shown below, demonstrates this new subproject concept.

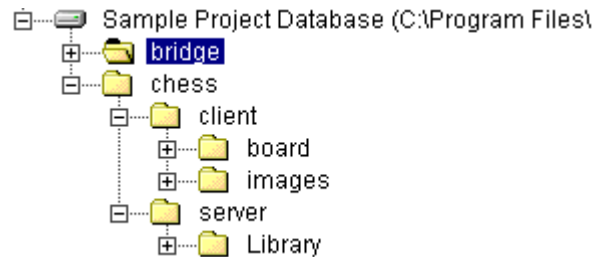


You can use subprojects to organize related versioned files and other subprojects. For more information about projects and subprojects, refer to the *Serena ChangeMan Version Manager User's Guide*.

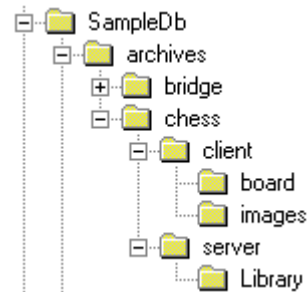
Defining Archive Locations

Organize archive directories to match workflow directories

Archive locations are created on your operating system by Version Manager automatically, relative to the location in which you created the project database. By default, Version Manager creates an archive structure that mirrors your project database. For example, if this is your pProject database structure:



Then this is the corresponding archive directory structure:



Because the archive structure in project databases supports nested directories, it's possible to use the exact same structure of your workfile directories for your project database and archive locations. By default, Version Manager automatically creates the structure for you.

For more information about creating project databases and defining archive locations, refer to the *Serena ChangeMan Version Manager Administrator's Guide*.

Multiple Project Selection

Version Manager supports the multiple selection of projects in a project database and multiple selection of folders in a 5.3/6.0 project root. Multiple projects or folders can be selected in the project pane if they all have the same parent project or parent project database. Multiple projects may not be selected in a 5.3/6.0 project root.

To select more than one project/folder, click the items while holding down the SHIFT key to select a series of items, or click the items while holding down the CTRL key to select non-adjacent items.

When multiple projects/folders are selected, all of the files contained within each selected item are shown in the file pane. A header line identifying the project/folder that the files are contained in is displayed for each item selected, followed by the files contained within the item. If you have the recursive file filter turned on (View | Filter | Recursive), then all of the subprojects and their files are also displayed.

Within the file pane, you can select a subset of the files to perform an action on. The selected files do not need to have the same parent project/folder. For more information about multiple project selection, refer to the *Serena ChangeMan Version Manager User's Guide*.

Working with Version Manager 5.3/6.0 Project Roots

You can perform a subset of Version Manager functionality when working with 5.3/6.0 project roots. For more information about working with Version Manager 5.3/6.0 project roots, see the *Serena ChangeMan Version Manager User's Guide*.

Using the Command-Line Interface

The project command-line interface lets you work with project databases and projects using a command-line interface in addition to using the Version Manager desktop client. For more information, refer to the next section "Using the Project Command-Line Interface with Version Manager."

The command-line interface works with archives directly. Therefore, function-related features that do not exist in the command-line interface, such as workspaces, projects, and project databases, are not supported. The command-line interface can be used with the PCLI to access these features.

To ensure that the same default archive suffix template is used for any archive that you access via both the desktop client and command-line interfaces, you must use the same configuration file regardless of which interface you use to modify an archive. Information about these issues is provided in this section.

Using the Project Command-Line Interface (PCLI)

The Version Manager project command-line interface (PCLI) allows you to work with project databases and projects using a command-line interface in addition to using the Version Manager graphical user interface. For example, using the PCLI, you can:

- Create project databases, projects, and workspaces
- Set workfile locations, archive locations, and configuration files
- Get the current workfile locations, archive locations, and configuration file names and locations
- List project databases, versioned files, and the attributes of various entities
- Add workfiles to projects
- Import archives to projects

Workspace Paths

In PCLI project commands, you can specify a workspace. For example, the workfile location for a project can vary depending on which workspace is set. Therefore, you may want to specify the workspace from which to obtain the workfile location. The default is the user's default workspace.

Direct Versus Batched Execution

- Direct execution You can execute PCLI commands one at a time by typing the command directly at the command line.
- Batched execution To speed multi-step and repetitive operations, you can write PCLI scripts that execute a sequence of PCLI commands. You can then execute all of the commands in the script by typing one command.

Using the Command-Line Interface with the PCLI

You can use commands provided in the PCLI in combination with the commands provided in the command-line interface (CLI). The PCLI uses a project path to identify files; the CLI uses both the workfile location and the archive location to identify files. For more information on using the PCLI, see the *Serena ChangeMan Version Manager PCLI User's Guide and Reference*.

Using the Version Manager IDE Client

The Version Manager IDE client allows you to access Version Manager projects from within numerous integrated development environments (IDEs). Using the IDE client, you can perform Version Manager functions, such as checking files in and out of archives, assigning version labels, and generating reports, without leaving your development application.

The Version Manager IDE client is certified for use with a number of IDEs, including Microsoft Visual C++, Microsoft Visual Basic, Microsoft Visual InterDev, Sybase PowerBuilder, Macromedia, Allaire ColdFusion Studio,

and Microsoft FrontPage. Supported functions vary across IDEs. See the *Serena ChangeMan Version Manager IDE Client Implementation Guide*.

Working with IDE Client Projects in Version Manager

Follow these guidelines when working with a Version Manager IDE client project from the Version Manager desktop client rather than from an IDE:

- You can check in, check out, lock, unlock, label, and force a branch on a file. These changes will be available in the project when you open it from your IDE.
- You can create new Version Manager projects and subprojects, and then associate your development projects with the new Version Manager projects from within your IDE.
- You cannot modify workfile locations for IDE client projects. When you add a project to source control from within your IDE, the location of your project files determines the Version Manager workfile location.

Working in Development Applications

When you perform any of the functions listed below from a development application, you can view the changes in the Version Manager desktop client when you open the project database that contains the IDE client projects:

- Add new projects
- Add new files
- Get, check in, check out, and undo check out
- Assign, rename, or delete a version label
- Increment a revision number
- Force a branch

Using the Version Manager Web Client

The Version Manager web client is an optional web browser interface to Version Manager, which is enabled when the Version Manager administrator installs and configures the Version Manager Server. The Version Manager web client works with Version Manager project databases and 5.3/6.0 project roots. With the Version Manager web client, users can perform daily tasks such as getting revisions, checking out/in files, adding workfiles, assigning version labels, and setting workspaces.

You must use Version Manager to perform all administrative tasks on project databases or roots. Administrative tasks can include creating and configuring project databases or roots, defining security, and setting up promotion models.

Using WebDAV Server

WebDAV Server allows you to automatically check out and check in files from within a supported WebDAV client, such as Microsoft Office or Macromedia Dreamweaver. Implementing and extending the WebDAV protocol, WebDAV Server prevents work from being lost by saving each new version of a file as a revision in Version Manager. You can access previous revisions through Version Manager desktop client or any of the other Version Manager interfaces.

Using a supported WebDAV client, you can perform these tasks on the project database configured to work with WebDAV Server:

- Get, check out, check in, and add files
- Create new projects
- Delete, copy, move, and rename versioned files and projects

Using Meritage

Serena ChangeMan Meritage makes it easy for users to collaborate when working on documents.

With Meritage, users are able to:

- View each others work.
- Check out documents.
- Collaborate when authoring documents as a team.
- See a history of all the changes that went into creating that document.
- Subscribe for notification about the documents by e-mail.

Meritage works from within Microsoft Office Word, Excel, and PowerPoint applications. After you install Meritage, you can access it from the Meritage menu on the menu bar of these applications.

Meritage uses the WebDAV server to host the Version Manager project database repository. Users can access the project databases through Network Places.

Refer to the Meritage online help from the Meritage menu to read about how Meritage works.

Index

A

- adding workfiles
 - from the command-line interface 79
 - from the desktop client 51, 61
- archives
 - creating 51
 - defining archive locations 88
 - locating 54

B

- base version 50
- branch version 50
- branches
 - collapsing 34
 - expanding 34
 - reviewing 34

C

- change history 85
- changed features
 - archive creation 51
 - copying projects and files 53
 - locating archives 54
 - Merge Tool 53
- checking in workfiles
 - using the command-line interface 81
 - using the desktop client 71
- checking out revisions
 - launching and editing a file 71
 - using the command-line interface 80
 - using the desktop client 69
- command-line interface
 - using with Version Manager 90
- command-line interface, description of 9

- contacting technical support 14, 16
- context menus 25
- conventions, typographical 15
- copying
 - projects 53
 - versioned files 53

D

- data file locations 54
- default settings in dialog boxes 47
- default version 50
- defining archive locations 88
- desktop 21
- desktop client
 - description of 8
 - exploring 21
 - starting 18
 - workflow 55
- dialog boxes
 - automatically dismissing 47
 - default settings 47
 - turning off 38
- dismissing dialog boxes 47
- documentation
 - guide to 11
 - suite 11

E

- editing files 69, 71

F

- File pane

- description of 29
- filtering the display 34
- working within 29

filters

- nonrecursive, definition of 36
- recursive, definition of 36
- using 34

G

- getting revisions 52, 65
- graphical user interface
 - working with 46

H

- hard-copy manuals, ordering 16
- header bar 26

I

- IDE client, description of 9

M

- menus 25
- Merge Tool 53
- merging files 53
- Meritage, using 93
- mnemonic keys 37, 38
- moving
 - files 53
 - projects 53
- multiple project selection 89

N

- nonrecursive filter 36

O

online help

- accessing 15, 39
- for the command-line interface 15
- for the desktop client 15
- for the IDE client 15
- for Version Manager web client 15
- navigating through 40
- using the table of contents 41
- using the tool bar 40

online manuals

- ordering hard-copy manuals 16

opening

- a project database 55
- the sample project database 56

P

printed manuals

- ordering 16

private workspaces 24

project command-line interface 90

project database

- collapsing the view 58
- definition of 27, 48
- expanding the view 57
- icons 27
- opening 55
- structure of 88
- structure of archive location 88

project information locations 54

Project pane

- description of 27
- working within 28

project roots

- working with 89

projects

- copying 53
- definition of 27
- icons 27
- moving 53

Promotion Groups tab 33

properties, reviewing 84

R

- recursive filter 36
- Results dialog box 47
- reviewing properties 84
- reviewing revisions
 - using the desktop client 73
- Revision pane
 - description of 30
 - Promotion Groups tab 33
 - using to view change history 85
 - Version Labels tab 33
- Revision tab 32
- revisions
 - checking out using the command-line interface 80
 - checking out using the desktop client 69
 - editing 69
 - getting 65
 - icons 31
 - reviewing using the desktop client 73
 - viewing 65
- Root Workspace 60

S

- sample project database
 - about 46
 - installation location 46, 74
 - opening 56
 - using from the command-line interface 74
 - using with the desktop client 46
- selecting multiple projects 89
- Serena
 - contacting 14
- Serena Collage Integration 10
- Serena products
 - Developer's Toolkit 10
- Serena, contacting 16
- setting a workspace 58
- shortcut keys 37
- sort order
 - changing 36
 - description of 36

- standard menus 25
- starting Version Manager 18
- status bar 24
- subprojects
 - definition of 49
 - using to organize files 87

T

- tool bar
 - buttons 23
 - configuring 22
- turning off dialog boxes 38
- typographical conventions 15

U

- upgrading, when to postpone upgrading 90
- using the Version Manager IDE client 91

V

- vcs.cfg file
 - creating 77
 - definition of 76
- vcscfg environment variable 76
- Version Labels tab 33
- Version Manager
 - exploring the desktop 21
 - starting 18
 - using with the command-line interface 90
 - using with Version Manager web client 93
- Version Manager 5.3/6.0 project roots, working with 89
- Version Manager 5.3/6.0, using with Version Manager web client 93
- Version Manager IDE client 91
- Version Manager web client
 - using with Version Manager 93
- versioned files

- accessing in the desktop client when created from the command-line interface 80
- copying 53
- definition of 29, 51
- icons 29
- Version Manager web client
 - description of 9
- viewing revisions 52, 65

W

- workfile location 50, 61
- workfiles
 - adding 51, 61
 - adding from the command-line interface 79
 - checking in using the command-line interface 81
 - checking in using the desktop client 71
 - definition of 51
 - location 50
- workflow
 - desktop client 55
 - for the command-line interface 75
- workspaces
 - base version 50
 - branch version 50
 - default version 50
 - definition of 50
 - identifying the current workspace 24, 59, 61
 - Root Workspace 60
 - setting 58
 - using the change drives 86
 - verifying workfile locations 61
 - workfile location 50