

# **OnWeb 7.5.0**

## **IIS Plug-in: Installation Guide**

**Micro Focus (IP) Ltd.**  
The Lawn  
22-30 Old Bath Road  
Newbury, Berkshire RG14 1QN  
UK  
<http://www.microfocus.com>

**Copyright 2010 Micro Focus (IP) Limited. All Rights Reserved.**

**MICRO FOCUS, the Micro Focus logo and RUMBA are trademarks or registered trademarks of Micro Focus (IP) Limited or its subsidiaries or affiliated companies in the United States, United Kingdom and other countries.**

**All other marks are the property of their respective owners.**

# Contents

- Introduction .....4**
- Installing the Plug-in .....5**
  - Pre-Requisites .....5
  - Installation .....5
- Working with a Remote OnWeb Server .....11**
  - Configuring the OnWeb Server IP Address and Port .....11
  - Creating a Shared Directory .....11
  - Configuring Sharing and Security .....11
  - Configuring the OnWeb Website home directory .....12
  - Finishing Off .....13
- Working with Multiple OnWeb Servers .....14**
  - First Steps .....14
  - Creating a New Web Extension .....14
  - Creating a New Application Pool .....16
  - Creating a New Web Site .....17
  - Creating a New Virtual Directory .....22
  - Finishing Off .....25
- Configuration File .....26**

# Introduction

This guide helps Internet Information Services (IIS) administrators to install, configure and use the OnWeb IIS filter and extension - the OnWeb IIS Plug-in.

The IIS Plug-in allows administrators to deploy, run and administer OnWeb applications using IIS as an interface to a local or remote OnWeb Server. Unlike the Apache Plug-in, the IIS Plug-in is shipped as a separate package. It runs on Windows Server with IIS installed.

If the OnWeb IIS Plug-in is installed on the same machine that runs OnWeb Server, the Plug-in can act as a watch dog, monitoring the OnWeb Server process.


# Installing the Plug-in

This section describes how to install the IIS Plug-in and describes pre-requisite system requirements.

## Pre-Requisites

The following pre-requisites are required before installing the plug-in:

- Microsoft Internet Information Services (IIS) 6.0 to be installed on the same machine
- Microsoft Windows Server 2003 or later
- Accurate system time
- Domain name registered in DNS
- Administrator account running the installer

 **Note:** After installation, the user account must be able to read from the Web Site pages root directory, and to read and execute the `IIS Plug-in\bin\OnWebIIS.dll` file. It is recommended to use the domain user account that you are planning to configure the IIS Plug-in web site to connect to on a remote OnWeb Server.

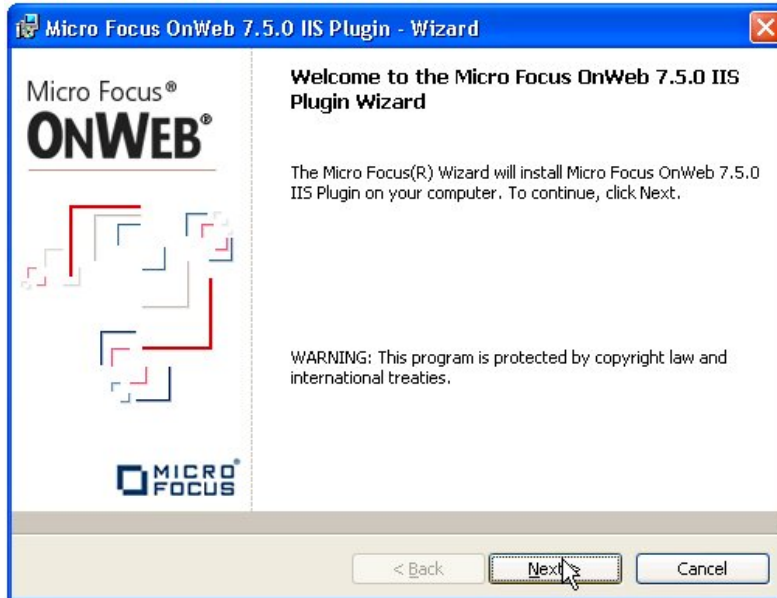
## Installation

The OnWeb IIS Plug-in is supplied on the main OnWeb installation DVD.

1. Run the OnWeb installation DVD and select **Install OnWeb 7.5.0 IIS Plug-in**:

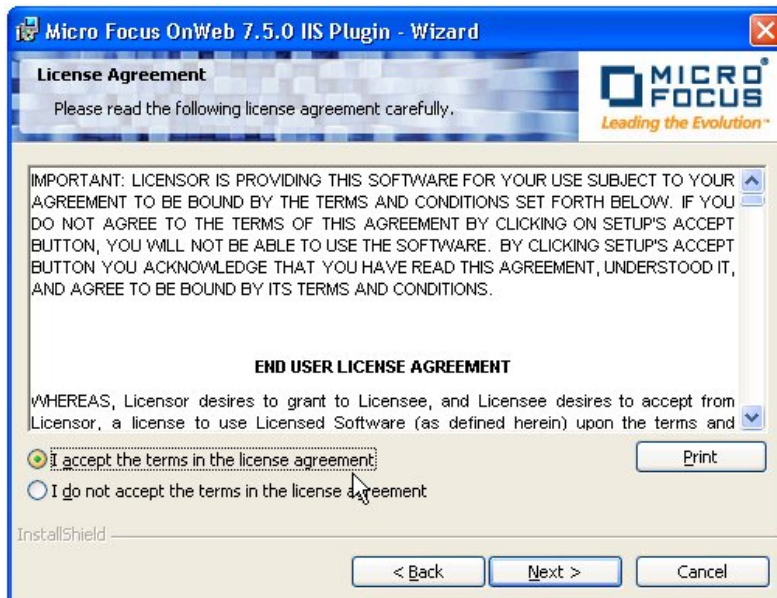


The plug-in wizard **Welcome** page is displayed:



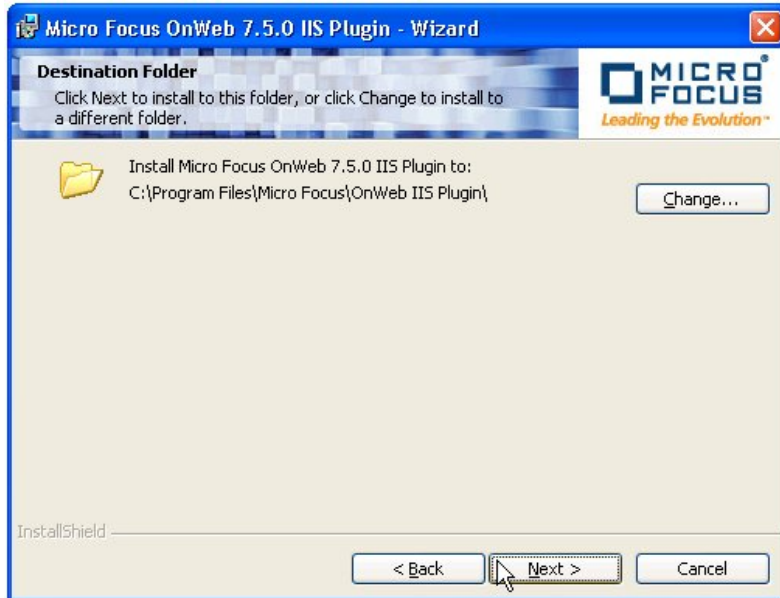
2. Click **Next**.

The **License Agreement** window is displayed:



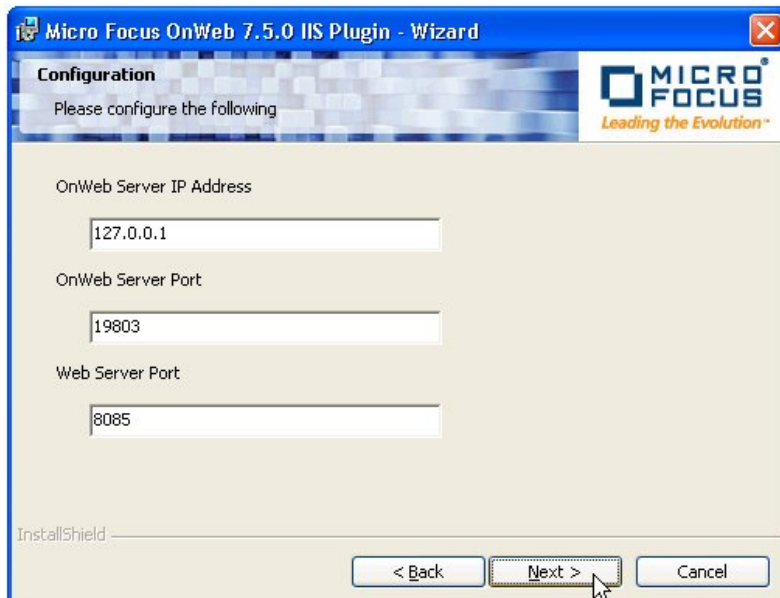
3. Select the radio button to accept the terms of the agreement, then click **Next**.

The **Destination Folder** window is displayed:



4. Click **Next** to install the plug-in to the default folder, or select **Change** to select a different folder.


The **Configuration** window is displayed:



5. In the **Configuration** window, set the OnWeb Server IP address, OnWeb Server port and the Web Server port. The installation program creates a new Web Site with the name **OnWeb Web Site**.

The default configured port is 8085. Ensure that the port you set does not conflict with the one used by the Apache Plug-in (default port 8084).

If you enter the IP address of a different machine, you are prompted to enter the home directory path for the remote OnWeb Server web pages root.

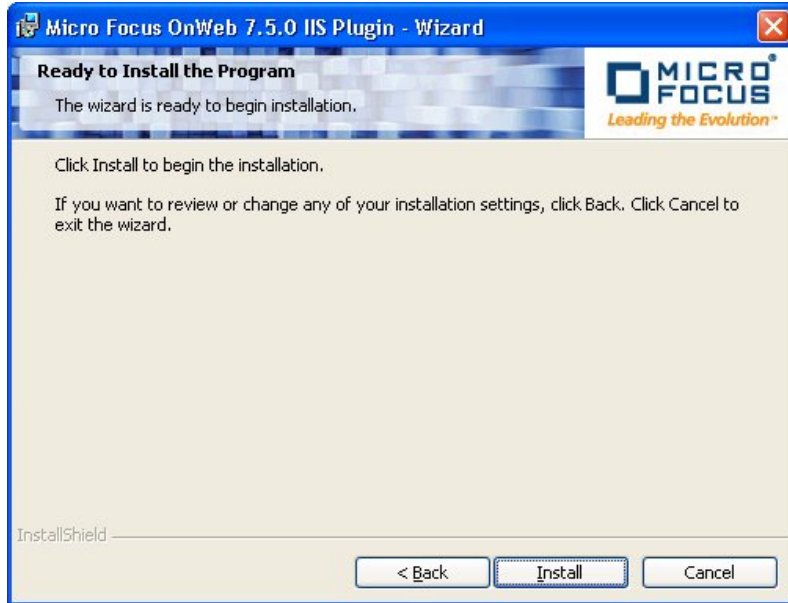
 **Note:** The installation program does not automatically configure permissions for remote OnWeb Server connections. These should be configured using the IIS management console. In addition, the installation program does not allow multiple OnWeb Server sites to be configured. The administrator must configure these manually. This requires:

- Creating a new web site in the IIS configured on a different port
- Duplicating the OnWeb Plug-in IIS binaries folder
- Updating the configuration file and the virtual directory location on the new web site

See [Working with a Remote OnWeb Server](#) on page 11 and [Working with Multiple OnWeb Servers](#) on page 14.

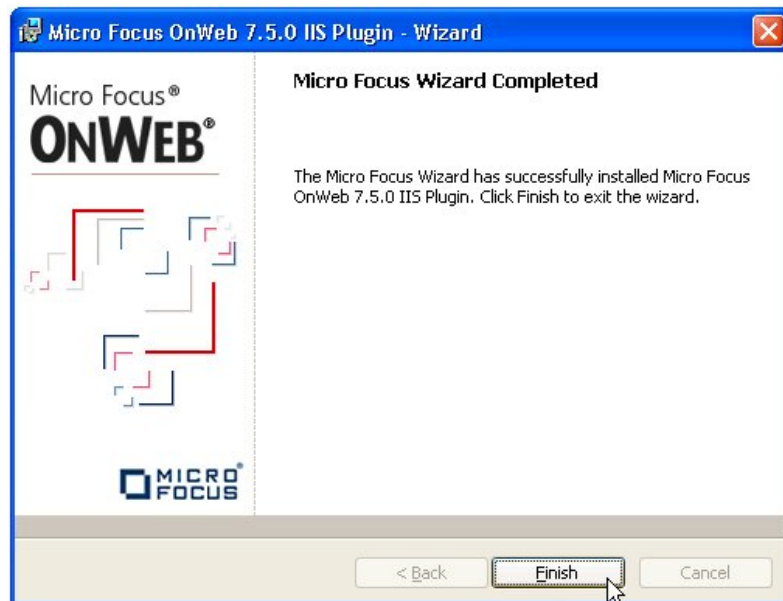
6. Click **Next**.

The **Ready to Install the Program** window is displayed:



7. Click **Install**.

The plug-in is installed. The **Micro Focus Wizard Completed** window is then displayed:

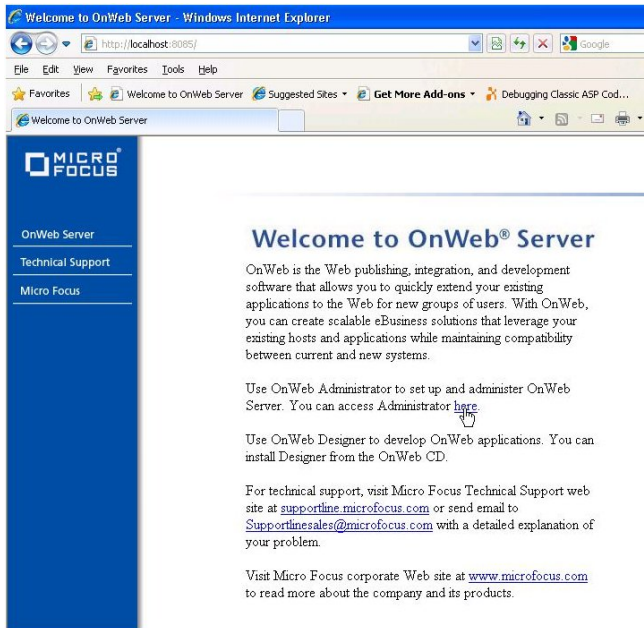


8. Click **Finish**.

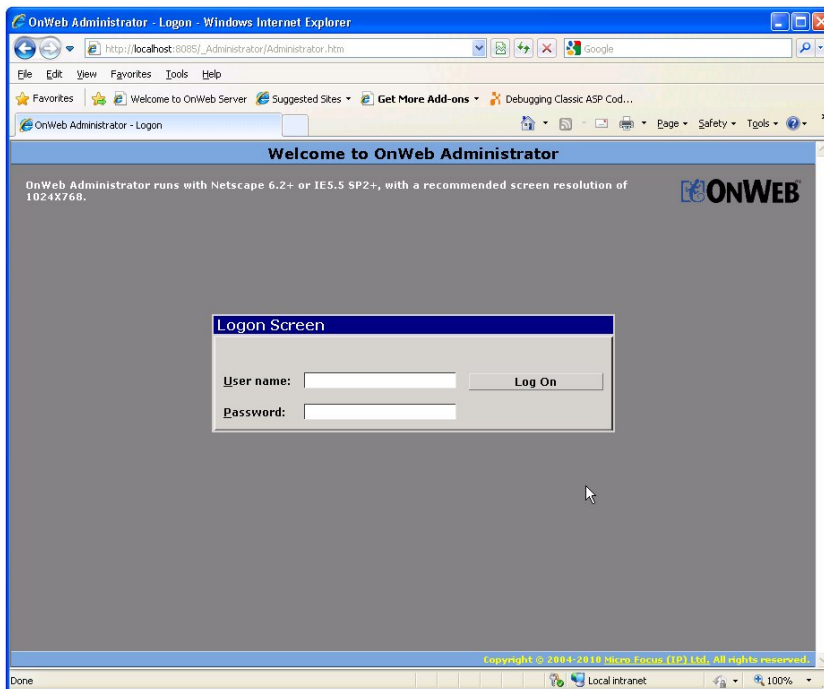
9. To check your installation, connect to the **OnWeb Administrator** page. For example, `http://localhost:8085`.



The **Welcome to OnWeb Server** page is displayed:



10. Click here to show the **OnWeb Administrator - Logon** page:



11. Type your user name and password, then click **Log On**.

The **OnWeb Administrator - Session Summary** page is displayed:

OnWeb Administrator - Session Summary - Windows Internet Explorer

http://localhost:8085/lab1/OnWebPGN

Visit Micro Focus Website

Powered By ONWEB

Help Log Off

Current Sessions | **Sessions Summary** | Data Sources | Tracing | Basic Configuration

License Key Management | OnWeb Applications | Emulator Configuration | Host Printing

**Server name: VS2005**

**Refresh settings**  
When this tab is active, it refreshes automatically.

**Refresh interval:** 1 minute(s)

**The last refresh occurred at:** Monday, 11 October 2010, 23:58:29 Jerusalem Standard Time

**Current statistics**

<b>Current number of user sessions:</b>	1 ( Currently active: 1 )
<b>Peak number of user sessions:</b>	1 ( Occurred at: Monday, 11 October 2010, 23:28:23 Jerusalem Standard Time )
<b>Peak number of working threads:</b>	2 ( Thread pool size: Initial = 128 Maximum = 1024 )

**Accumulated statistics**

<b>Total number of requests processed:</b>	20
<b>Total number of rejected sessions (license exceeded):</b>	0
<b>Total number of user sessions:</b>	3

Help Refresh

Copyright © 2004-2010 Micro Focus (IP) Ltd. All rights reserved.

Local intranet 100%

# Working with a Remote OnWeb Server

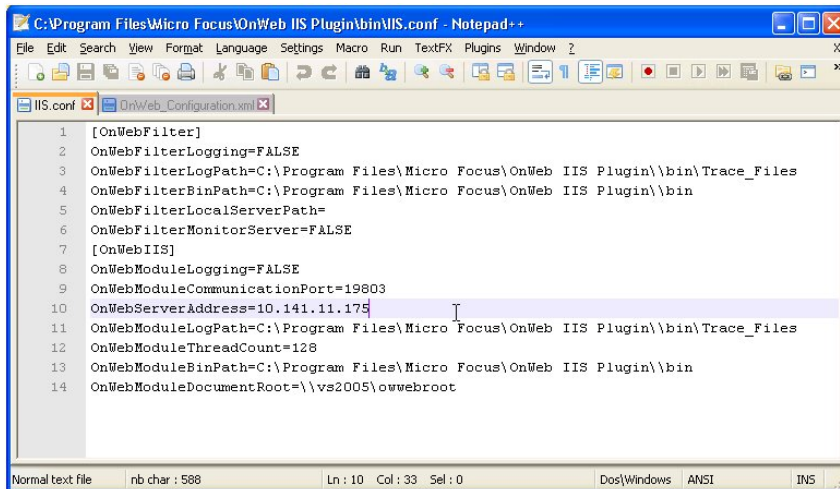
If you want to configure the IIS Plug-in to work with a remote OnWeb Server, go through the steps in this section.

## Configuring the OnWeb Server IP Address and Port

To configure the OnWeb Server IP address and port:

1. Change the **OnWebServerAddress** and **OnWebCommunicationPort** settings in the IIS Plug-in configuration file (`IIS.Conf`) to point to the remote OnWeb Server.

The default file location is `<Program Files Directory>\Micro Focus\OnWeb IIS Plug-in\bin`.



```
C:\Program Files\Micro Focus\OnWeb IIS Plug-in\bin\IIS.conf - Notepad++
File Edit Search View Format Language Settings Macro Run TextFX Plugins Window ?
IIS.conf OnWeb_Configuration.xml
1 [OnWebFilter]
2 OnWebFilterLogging=FALSE
3 OnWebFilterLogPath=C:\Program Files\Micro Focus\OnWeb IIS Plug-in\bin\Trace_Files
4 OnWebFilterBinPath=C:\Program Files\Micro Focus\OnWeb IIS Plug-in\bin
5 OnWebFilterLocalServerPath=
6 OnWebFilterMonitorServer=FALSE
7 [OnWebIIS]
8 OnWebModuleLogging=FALSE
9 OnWebModuleCommunicationPort=19803
10 OnWebServerAddress=10.141.11.175
11 OnWebModuleLogPath=C:\Program Files\Micro Focus\OnWeb IIS Plug-in\bin\Trace_Files
12 OnWebModuleThreadCount=128
13 OnWebModuleBinPath=C:\Program Files\Micro Focus\OnWeb IIS Plug-in\bin
14 OnWebModuleDocumentRoot=\\vs2005\owwebroot
Normal text file nb char : 588 Ln : 10 Col : 33 Sel : 0 Dos\Windows ANSI INS
```

2. Update the **OnWebModuleDocumentRoot** value to point to the remote shared folder.

## Creating a Shared Directory

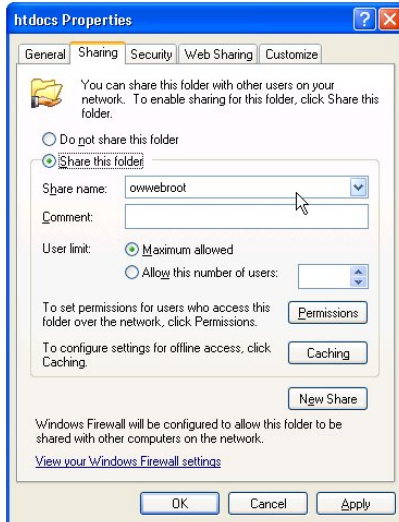
It is recommended that you create a new shared directory that maps to the root of the remote OnWeb Server web page.

You should create a share to the `\OnWeb Server\Apache2\htdocs` directory – this is created when the OnWeb Apache Plug-in is installed. The Apache HTTP Server is configured automatically as the OnWeb Server default interface during the server installation. Using the same web root allows both plug-ins and the OnWeb Server to use the same location to manage and run the applications. Essentially, you will use either the Apache or IIS Plug-in to communicate with the server.

## Configuring Sharing and Security

To configure sharing and security:

1. In Windows Explorer, browse to:  
C:\Program Files\Micro Focus\OnWeb Server\Apache2
2. Right-click the **htdocs** folder, then select **Sharing and Security** from the pop-up menu. The **htdocs Properties** window is displayed.
3. On the **Sharing** page, ensure the **Share this folder** radio button is selected:



4. Click **Permissions**. The **Permissions for htdocs** window is displayed.
5. Check **Read** access for **Everyone**, then click **OK**.
6. On the **Security** page, click **Add**. The **Select Users, Computers and Groups** window is displayed:

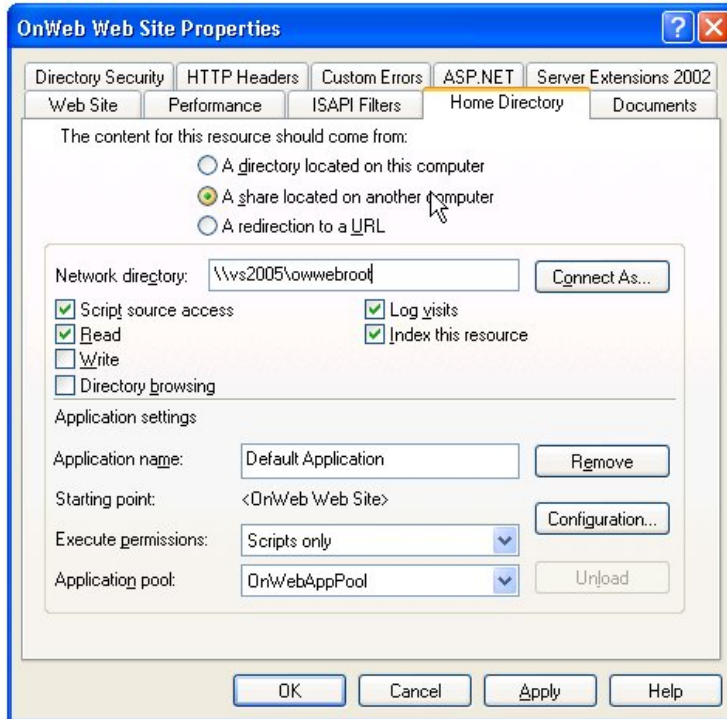


7. Set the configurations you want, then click **OK**.
8. In the **htdoc Properties** window, click **OK**.

## Configuring the OnWeb Website home directory

To configure the OnWeb Website home directory:

1. From the Windows **Start** menu, select:  
**Administrative Tools > Information Internet Services (IIS) Manager**.  
The **Information Internet Services (IIS) Manager** window is displayed.
2. In the Websites directory tree, right-click **OnWeb Web Site** and select **Properties** from the pop-up menu.  
The **OnWeb Web Site Properties** window is displayed:



3. On the **Home Directory** page, select the **A share located on another computer** radio button.
4. In the **Network directory** field, type the path to the previously configured web site root share.
5. If you do not always want to use the authenticated user's credentials when validating access to the network directory, click **Connect As** to configure different security credentials for that directory. The **Network Directory Security Credentials** window is displayed:



6. When you finished configuration, click **OK**.
7. Click **OK** in the **OnWeb Web Site Properties** window.

## Finishing Off

To complete your configuration:

1. Restart IIS. To do this, in the **Information Internet Services (IIS) Manager** window, right-click the server name, then select **All Tasks > Restart IIS** from the pop-up menu.
2. Right-click **Web Site browse** to test the communication with the remote OnWeb Server. See [Installation](#) on page 5.

# Working with Multiple OnWeb Servers

If you want to configure the IIS Plug-in to work with multiple OnWeb Servers, go through the steps in this section.

This example uses Microsoft Server 2003 and IIS 6.0.

## First Steps

1. Create a new folder for the new IIS Plug-in. For example:

C:\Program Files\Micro Focus\OnWeb IIS Plugin 2

2. Copy all .DLL files from the existing plug-in installation folder to the new folder you have created.
3. From the Windows **Start** menu, select:

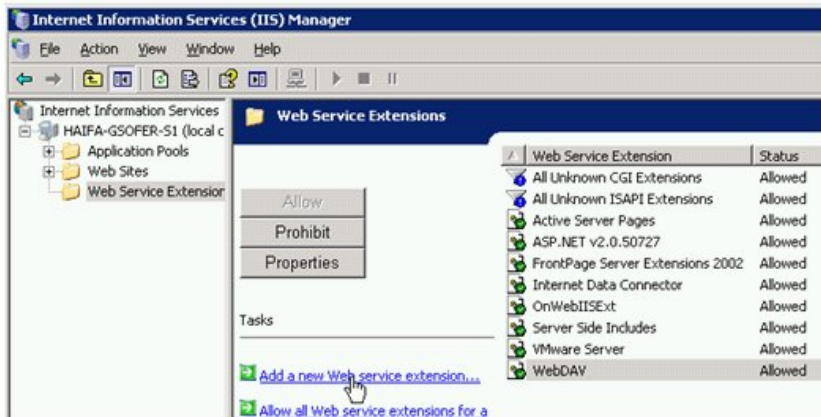
**Administrative Tools > Information Internet Services (IIS) Manager.**

The **Information Internet Services (IIS) Manager** window is displayed.

## Creating a New Web Extension

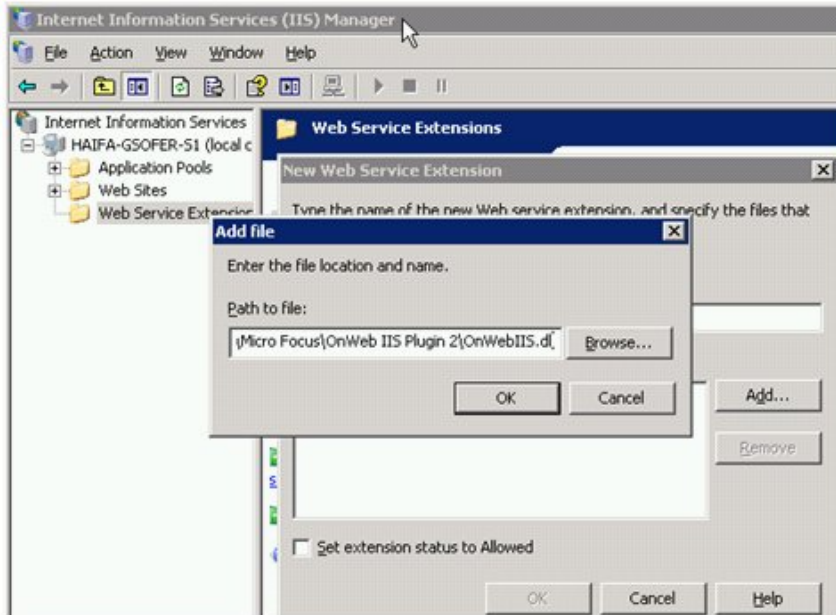
To create a new web extension:

1. In the **Web Service Extensions** folder, select **Add a new Web service extension**:

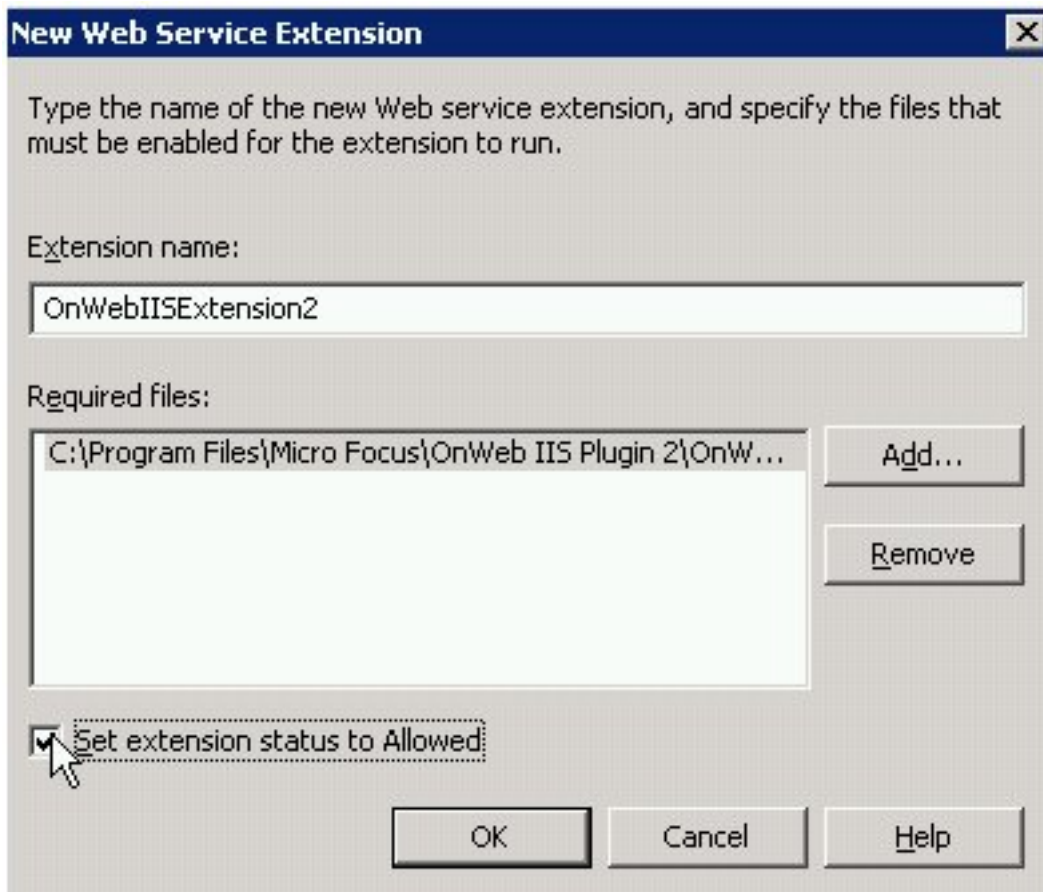


2. In the **New Web Service Extension** window, click **Add**.
3. In the **Add file** window, click **Browse** and select the OnWebIIS.dll file you copied in [First Steps](#) on page 14:





4. Click **OK**.
5. In the **New Web Service Extension** window, check **Set extension status to Allowed**:

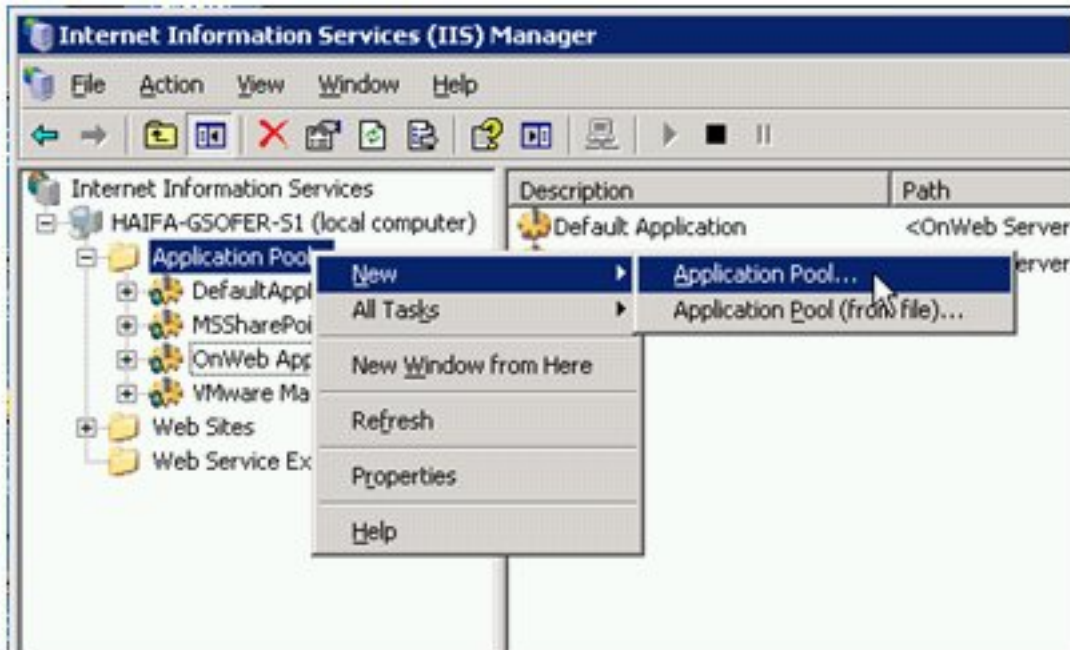


6. Click **OK**.

# Creating a New Application Pool

To create a new application pool:

1. In the **Information Internet Services (IIS) Manager** window, right-click the **Application Pool** folder and select **New > Application Pool** from the pop-up menu:



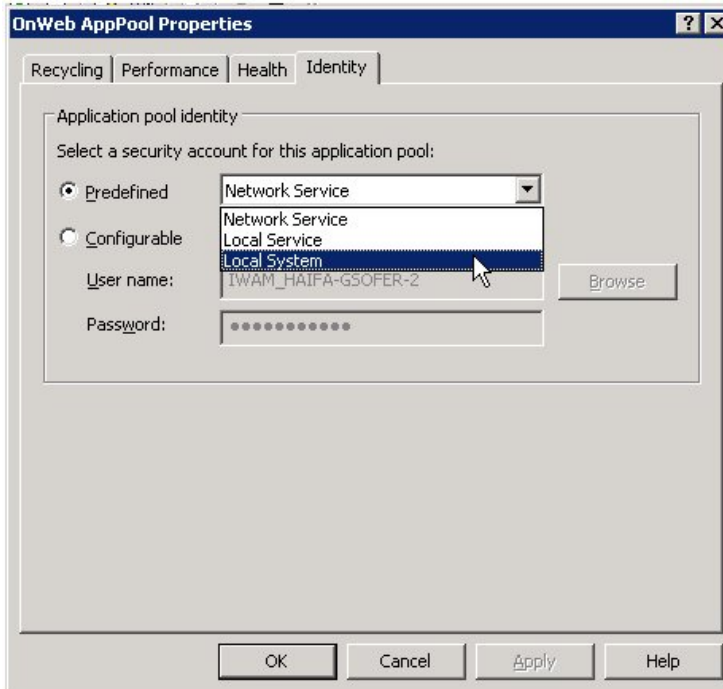
The **Add New Application Pool** window is displayed:



2. In the **Application pool ID** field, type **OnWeb AppPool1**, then click **OK**.
3. In the **Information Internet Services (IIS) Manager** window, right-click **OnWeb AppPool** and select **Properties** from the pop-up menu.

The **OnWeb AppPool Properties** window is displayed:





4. On the **Identity** page, select the **Predefined** radio button.
5. Select **Local System** from the drop-down list box.
6. When the **IIS Manager** message box is displayed, click **Yes**:



## Creating a New Web Site

To create a new web site:

1. In the **Information Internet Services (IIS) Manager** window, right-click **Web Sites** and select **New > Web Site** from the pop-up menu.

The **Web Site Creation Wizard** is displayed:



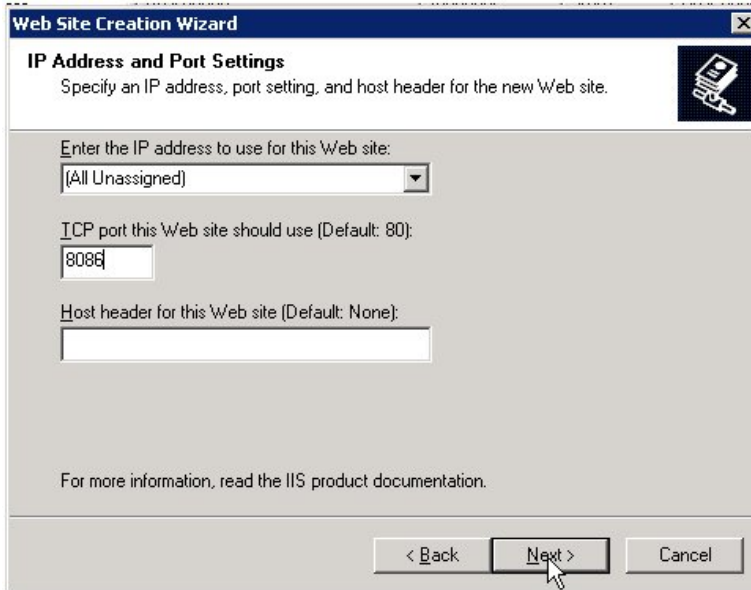
2. Click **Next**.

The **Web Site Description** window is displayed:



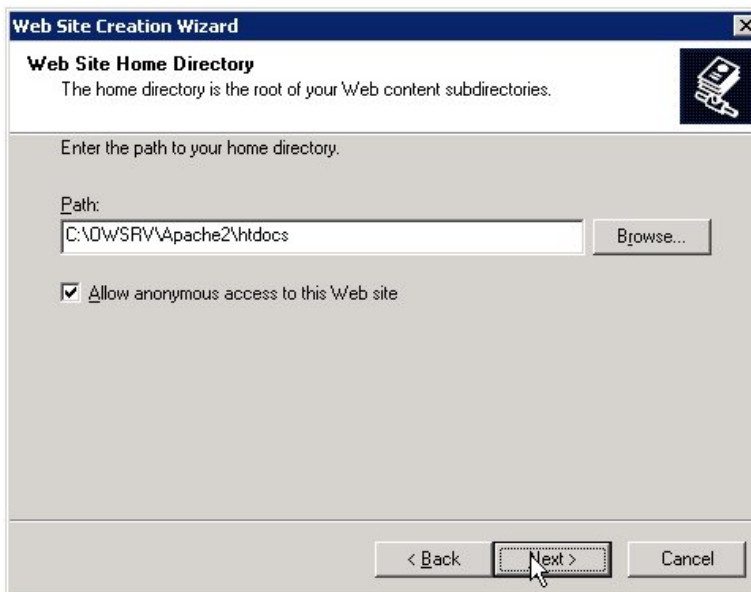
3. In the **Description** field, type a name for the new web site. For example, `OnWeb Server 2`.
4. Click **Next**.

The **IP Address and Port Settings** window is displayed:




5. Change the port number as required.
6. Click **Next**.

The **Web Site Home Directory** window is displayed:

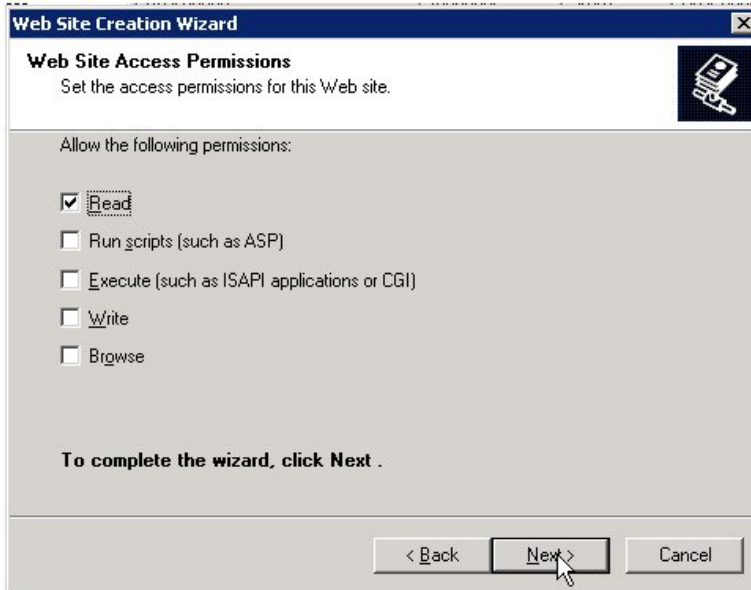


7. In the **Path** field, type:  
Apache2\htdocs

 **Note:** The path can be a local or remote path.

8. Click **Next**.

The **Web Site Access Permissions** window is displayed:

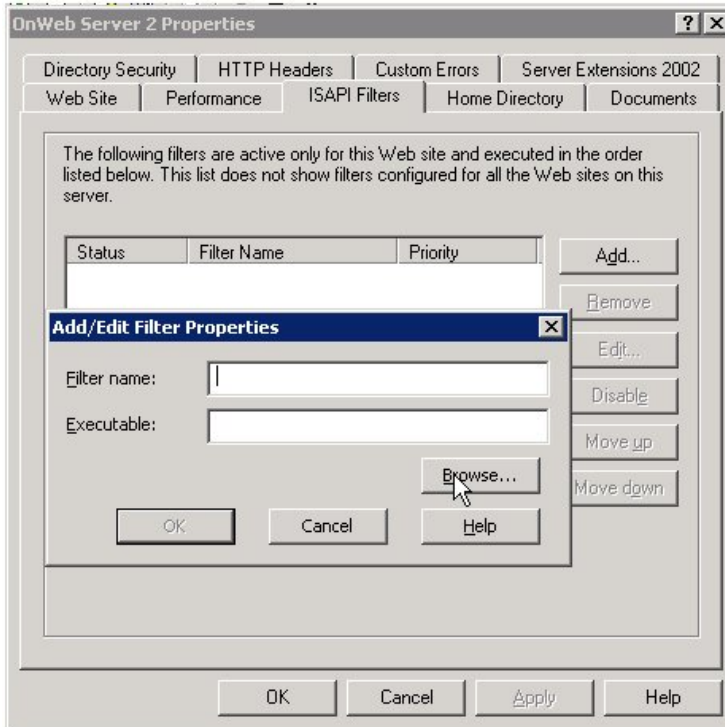


9. Ensure that only **Read** is checked.
10. Click **Next**.

The completion wizard is displayed:



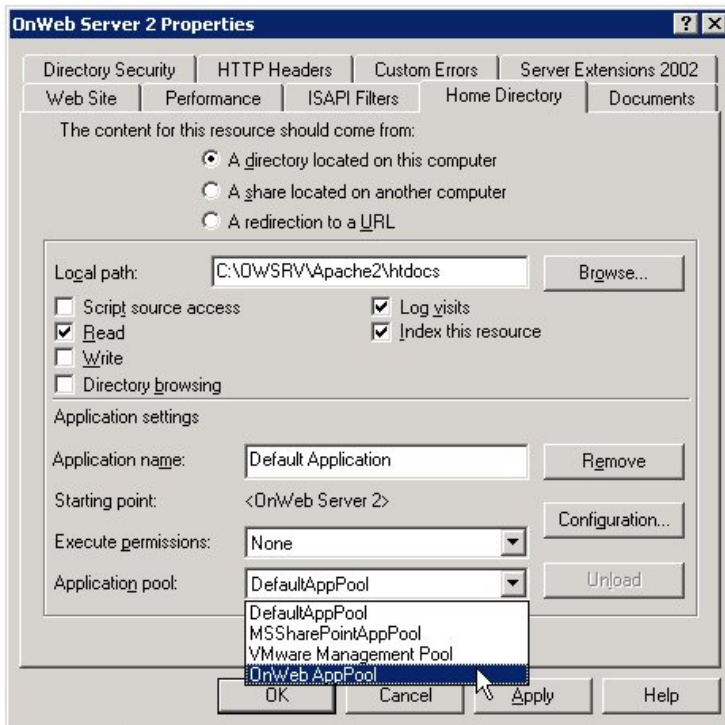
11. In the **Information Internet Services (IIS) Manager** window, right-click **OnWeb Server 2** and select **Properties** from the pop-up menu.  
The **OnWeb Server 2 Properties** window is displayed.
12. On the **ISAPI Filter** page, click **Add**.  
The **Add/Edit Filter Properties** window is displayed:



13. Click **Browse** and select **OnWebFilter.dll**.

14. Click **OK**.

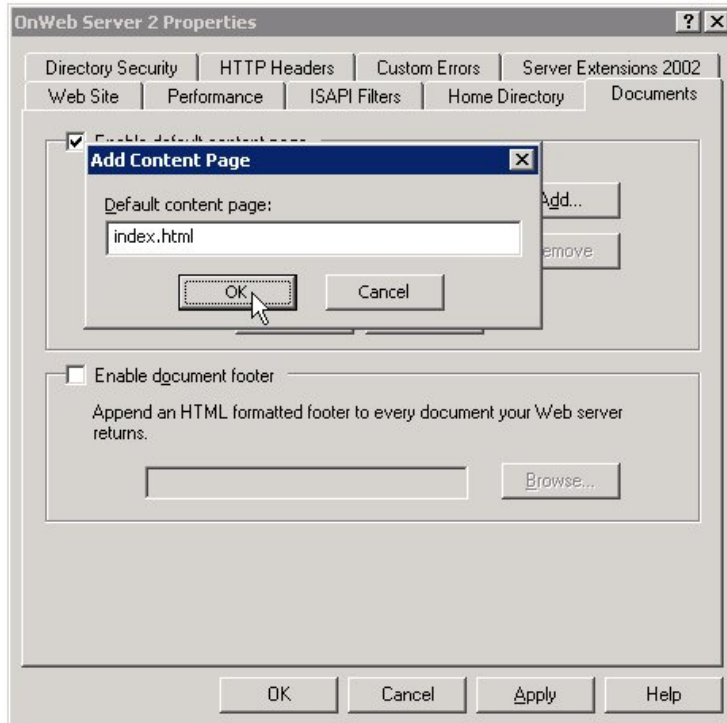
15. On the **Home Directory** page, select **OnWeb AppPool** from the **Application pool** drop-down list box:



16. On the **Documents** page, select all three documents and click **Remove**.

17. Click **Add**.

The **Add Content Page** window is displayed:



18. In the **Default content page** field, type `index.html` and click **OK**.

19. Click **OK** to close the **OnWeb Server 2 Properties** window.

## Creating a New Virtual Directory

To create a new virtual directory:

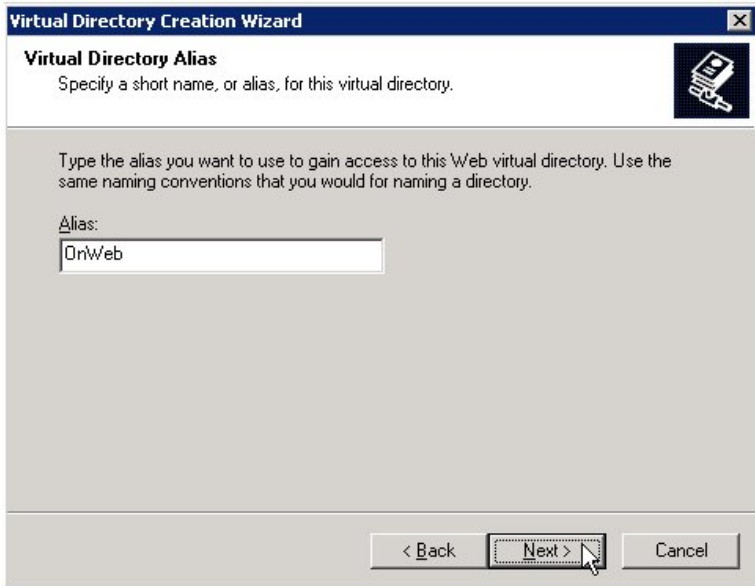
1. In the **Information Internet Services (IIS) Manager** window, right-click **OnWeb Server 2** and select **New > Virtual Directory** from the pop-up menu.

The **Virtual Directory Creation Wizard** is displayed:



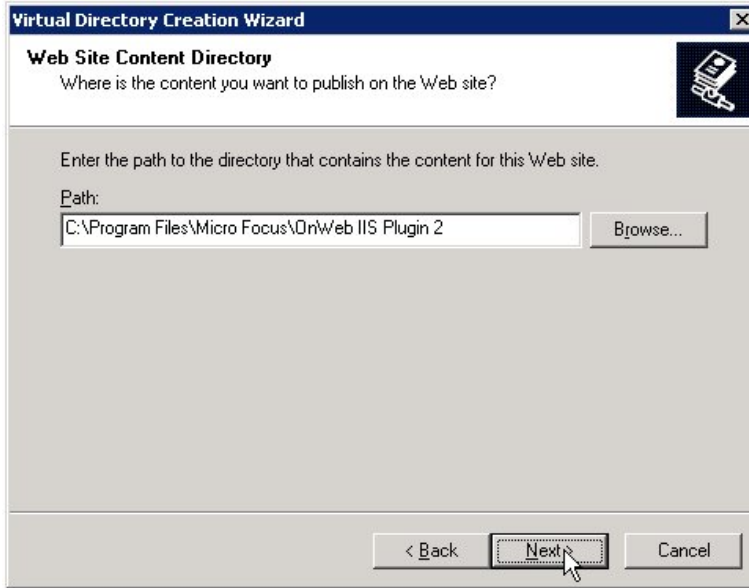
2. Click **Next**.

The **Virtual Directory Alias** window is displayed:



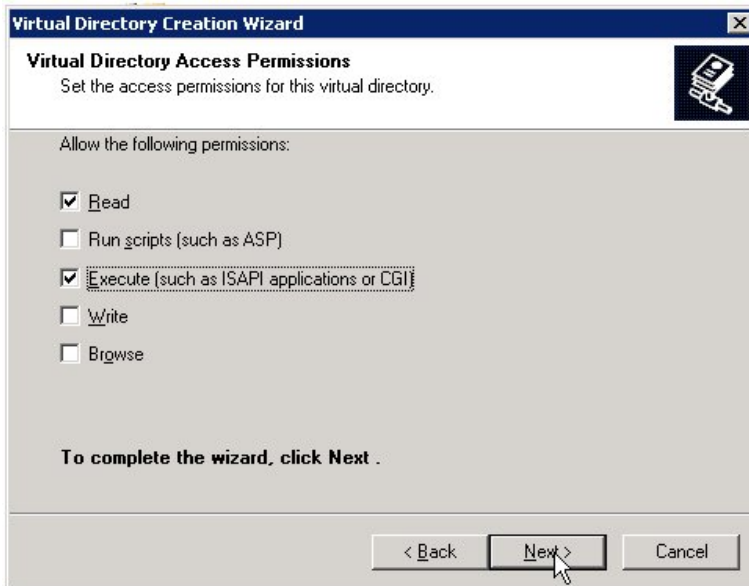
3. In the **Alias** field, type **onWeb**, then click **Next**.

The **Web Site Content Directory** window is displayed:



4. Click **Browse** and select the **OnWeb II Plug-in 2** folder you created in *First Steps* on page 14, then click **Next**.

The Virtual Directory Access Permissions window is displayed:



5. Check the **Read** and **Execute** check boxes, then click **Next**.

The completion wizard is displayed:





## Finishing Off

To complete your configuration:

1. Create an `IIS.conf` file in the OnWeb IIS Plugin 2 folder you created in [First Steps](#) on page 14. For an example file, see [Configuration File](#) on page 26.
2. Restart IIS. To do this, in the **Information Internet Services (IIS) Manager** window, right-click the server name, then select **All Tasks > Restart IIS** from the pop-up menu.

# Configuration File

This section describes the contents of the IIS Plug-in configuration file.

The configuration file is stored in `..\Micro Focus\OnWeb IIS Plugin\bin\IIS.Conf`.

Setting	Description
<b>[OnWebFilter]</b>	
<b>OnWebFilterLogging</b> =FALSE	Set the value to TRUE or FALSE to switch the OnWeb IIS filter logging on or off.
<b>OnWebFilterLogPath</b> =C:\Program Files\Micro Focus\OnWeb IIS Plug-in\bin\Trace_Files	OnWeb IIS filter log path.
<b>OnWebFilterBinPath</b> =C:\Program Files\Micro Focus\OnWeb IIS Plug-in\bin	OnWeb IIS filter module (OnWebFilter.dll) directory location.
<b>OnWebFilterLocalServerPath</b> =C:\Program Files\Micro Focus\OnWeb Server\bin	Local OnWeb server path. Parameter and value are ignored if <b>OnWebFilterMonitorServer</b> is set to FALSE. If the IIS Plug-in is configured to a remote OnWeb Server, set this value to FALSE.
<b>OnWebFilterMonitorServer</b> =FALSE	TRUE/FALSE. Set this value to TRUE to allow the IIS Plug-in to act as a watchdog for the local OnWeb Server process. In this mode, the IIS Plug-in starts the OnWeb Server automatically on the first client OnWeb request. The plug-in also restarts the OnWeb Server automatically if the server shuts down. If you enable this feature, you must shut down the OnWeb Apache Plug-in.
<b>[OnWebIIS]</b>	
<b>OnWebModuleLogging</b> =FALSE	Set the value to TRUE or FALSE to switch OnWeb IIS Extension logging on or off.
<b>OnWebModuleCommunicationPort</b> =19803	OnWeb Server port value.
<b>OnWebServerAddress</b> =127.0.0.1	OnWeb Server IP Address.
<b>OnWebModuleLogPath</b> =C:\Program Files\Micro Focus\OnWeb IIS Plug-in\bin\Trace_Files	OnWeb IIS Extension log path.
<b>OnWebModuleThreadCount</b> =128	OnWeb Extension worker thread count.
<b>OnWebModuleBinPath</b> =C:\Program Files\Micro Focus\OnWeb IIS Plug-in\bin	OnWeb IIS module (OnWebIIS.dll) directory location.
<b>OnWebModuleDocumentRoot</b> =C:\Program Files\Micro Focus\OnWeb Server\Apache2\htdocs	OnWeb web pages directory root location. Must point to either the same Apache Plug-in web pages root location, or to a folder with the same content.